

## 1994-2001 Dodge 1/2 Ton 1994-2002 Dodge 3/4 & 1 Ton HD OEM Steering Stabilizer Installation Instructions

### Required Tools List:

- SAE Sockets \ Wrenches  
(11/16" & 3/4")
- Metric Sockets \ Wrenches
- Diagonal Cutting Pliers
- Safety Glasses
- Wheel Chock
- Torque Wrench



Before beginning the installation, read these instructions thoroughly & completely. Please refer to the Parts List to insure that all parts & hardware are received prior to disassembly of the vehicle. If any parts are found to be missing, contact SKYJACKER® Customer Service at 318-388-0816 to obtain the needed items. If you have any questions or reservations about installing this product, contact SKYJACKER® Technical Assistance at 318-388-0816.

### Component Box Breakdown:

#### Part # 7007

Item #	Description	Qty
7000WS	STEERING DAMPER, WHITE	1
B10RS	BOOT STABILIZER, RED	1
BTIE	BOOT CABLE TIE, RED	1
HYDRO 6X2-CL	DECAL, HYDRO STABILIZER	1
HB-7007	HDWR BAG: 7007 / 9007	1

#### Part # 8007

Item #	Description	Qty
8000BS	STEERING DAMPER, BLACK	1
B10KS	BOOT STABILIZER, BLACK	1
BTIE-K	BOOT CABLE TIE, BLACK	1
MXSD	DECAL, BLACK MAX STABILIZER	1
HB-8007	HDWR BAG: 8007	1

#### Part # 9007

Item #	Description	Qty
9000WS	STEERING DAMPER, SILVER	1
B10KS	BOOT STABILIZER, BLACK	1
BTIE-K	BOOT CABLE TIE, BLACK	1
SSD	DECAL, SILVER STABILIZER	1
HB-7007	HDWR BAG: 7007 / 9007	1

### Hardware Bag Breakdown:

#### Part # HB-7007

Item #	Description	Qty
HOURGLASS 5/8	HOURGLASS, 5/8 X 1.50, RED	2
P837	TAPERED STUD MOUNT, 141264	1
141509	ES25 SLEEVE, 1.50 LONG	1
142121	ES24 SLEEVE, 1.38 LONG	2
12X312FTB	1/2 X 3-1/2 FINE THREAD BOLT	1
12X4FTB	1/2 X 4 FINE THREAD BOLT	1
12FTN	1/2-20 FINE N/I LOCK NUT	2
12SAEW	1/2 SAE WASHER	2
81004	TAPERED SLEEVE, 1/2 I.D.	1
58SP	SPACER, 5/8 I.D. X 1-1/4 O.D.	1

#### Part # HB-8007

Item #	Description	Qty
HG5815-K	HOURGLASS, 5/8 X 1.50, BLACK	2
P837	TAPERED STUD MOUNT, 141264	1
141509	ES25 SLEEVE, 1.50 LONG	1
142121	ES24 SLEEVE, 1.38 LONG	2
12X312FTB	1/2 X 3-1/2 FINE THREAD BOLT	1
12X4FTB	1/2 X 4 FINE THREAD BOLT	1
12FTN	1/2-20 FINE N/I LOCK NUT	2
12SAEW	1/2 SAE WASHER	2
81004	TAPERED SLEEVE, 1/2 I.D.	1
58SP	SPACER, 5/8 I.D. X 1-1/4 O.D.	1

**Component Box Breakdown:****Part # 7017**

Item #	Description	Qty
7000WS	STEERING DAMPER, WHITE	1
B10RS	BOOT STABILIZER, RED	1
BTIE	BOOT CABLE TIE, RED	1
HYDRO 6X2-CL	DECAL, HYDRO STABILIZER	1
HB-7017	HDWR BAG: 7017 / 9017	1

**Part # 8017**

Item #	Description	Qty
8000BS	STEERING DAMPER, BLACK	1
B10KS	BOOT STABILIZER, BLACK	1
BTIE-K	BOOT CABLE TIE, BLACK	1
MXSD	DECAL, BLACK MAX STABILIZER	1
HB-8017	HDWR BAG: 8017	1

**Part # 9017**

Item #	Description	Qty
9000WS	STEERING DAMPER, SILVER	1
B10KS	BOOT STABILIZER, BLACK	1
BTIE-K	BOOT CABLE TIE, BLACK	1
SSD	DECAL, SILVER STABILIZER	1
HB-7017	HDWR BAG: 7017 / 9017	1

**Hardware Bag Breakdown:****Part # HB-7017**

Item #	Description	Qty
HOURGLASS 5/8	HOURGLASS, 5/8 X 1.50, RED	2
141509	ES25 SLEEVE, 1.50 LONG	3
142121	ES24 SLEEVE, 1.38 LONG	1
12X312FTB	1/2 X 3-1/2 FINE THREAD BOLT	1
12X4FTB	1/2 X 4 FINE THREAD BOLT	1
12FTN	1/2-20 FINE N/I LOCK NUT	2
12SAEW	1/2 SAE WASHER	2
12USSW	1/2 USS WASHER	1
81004	TAPERED SLEEVE, 1/2 I.D.	1
58SP	SPACER, 5/8 I.D. X 1-1/4 O.D.	1

**Part # HB-8017**

Item #	Description	Qty
HG5815-K	HOURGLASS, 5/8 X 1.50, BLACK	2
141509	ES25 SLEEVE, 1.50 LONG	3
142121	ES24 SLEEVE, 1.38 LONG	1
12X312FTB	1/2 X 3-1/2 FINE THREAD BOLT	1
12X4FTB	1/2 X 4 FINE THREAD BOLT	1
12FTN	1/2-20 FINE N/I LOCK NUT	2
12SAEW	1/2 SAE WASHER	2
12USSW	1/2 USS WASHER	1
81004	TAPERED SLEEVE, 1/2 I.D.	1
58SP	SPACER, 5/8 I.D. X 1-1/4 O.D.	1

**Pre-Installation Tips: Install Stabilizer Boot, Bushings and Sleeves.**

1. Install supplied Stabilizer Boot over Skyjacker Steering Stabilizer. Attach boot to cylinder body with supplied Boot Cable Tie. Remove excess cable tie with diagonal cutting pliers.

2. Coat Hourglass Bushings with a water resistant grease & press into each stabilizer eye.

**#7007 with OEM Pitman Arm. 1994-1997 1500 Models. 1994-1997 3/4 & 1 Ton Models.**

Coat 1.50" Steel Sleeve with a water resistant grease & press into Cylinder Body Eye Bushing Only.

**#7007 with OEM Pitman Arm. 1998-2001 1500 Models. 1998-2002 3/4 & 1 Ton Models.**

Coat 1.38" Steel Sleeve with a water resistant grease & press into each stabilizer eye bushing.

**#7017 with Lift & Drop Pitman Arm. 1998-2001 1500 Models. 1994-2002 3/4 & 1 Ton Models.**

Coat 1.50" Steel Sleeve with a water resistant grease & press into each stabilizer eye bushing.

**Installation: Note: Save all factory components & hardware for reuse, unless noted.**

1. Chock rear tires\wheels. Ensure that vehicle transmission is in PARK and engage emergency brake. **Note:** Be sure steering wheel\wheels are pointing straight forward.
2. Remove OEM steering stabilizer from passenger side frame mount & from drag link\tie rod assembly stud mount.

**#7017 with Lift & Drop Pitman Arm. 1998-2001 1500 Models. 1994-2002 3/4 & 1 Ton Models.**

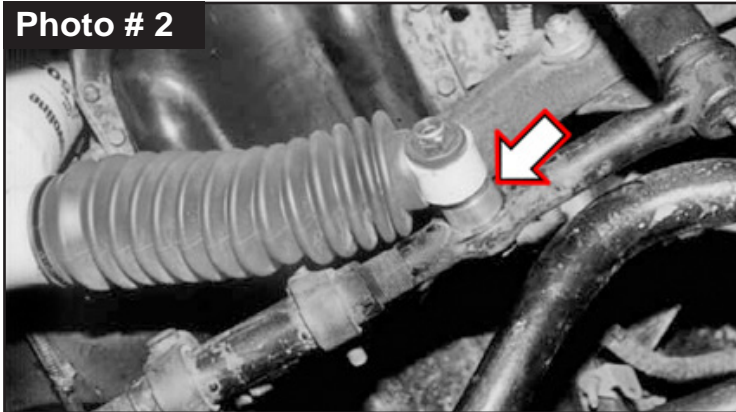
3. Install Skyjacker #7017 Steering Stabilizer. Install shaft eye of stabilizer to tie rod with supplied hardware. (See Photo # HB-7017)

**HB-7017**



Place supplied 1/2" SAE Washer onto 1/2" x 3-1/2" Bolt. Insert Tapered Sleeve into tapered hole in OEM tie rod assembly stud mount. Insert bolt with washer through tapered sleeve \ tie rod hole. Place supplied 5/8" x 1-1/4" Spacer, shaft eye of stabilizer (with sleeve in eye), large 1/2" USS Washer & attach with 1/2" Nylon Insert Lock Nut. Secure, but **Do Not Completely Tighten** at this time using a 3/4" socket \ wrench. (See Photo # 1 & # 2)

**Photo # 2**

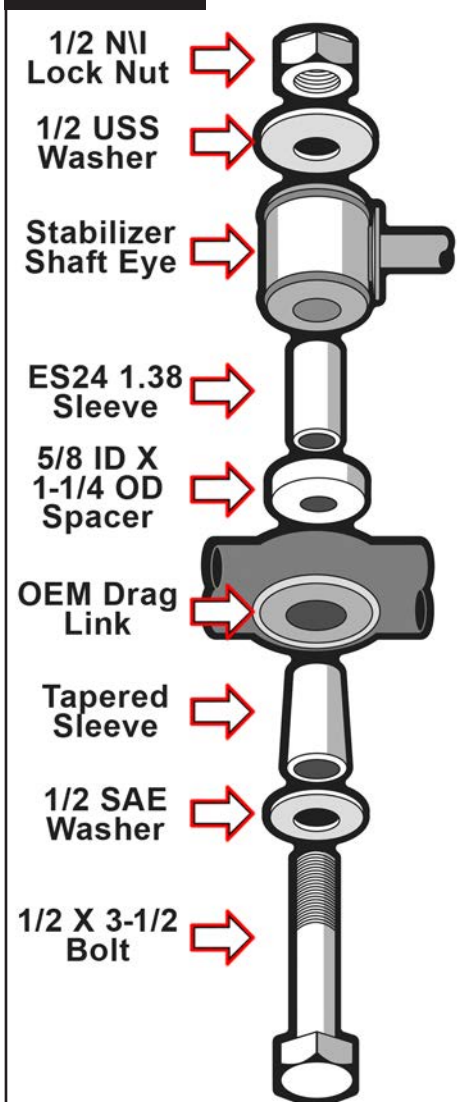


4. Install cylinder eye of stabilizer to frame mount with supplied hardware. (See Photo # 3) **Note:** DO NOT Install Inside OEM Mounting Tabs. OEM angle with a dropped pitman arm tends to put additional downward stress on tie rod.

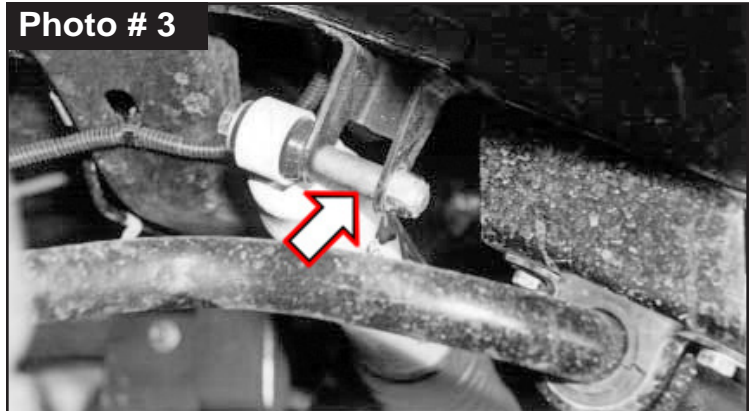
Insert supplied 1/2" x 4" Bolt with 1/2" SAE Washer through cylinder eye of stabilizer & outer mounting tab. Place supplied 1.50" Steel Sleeve inside mounting tabs. Attach with supplied 1/2" Nylon Insert Lock Nut using a 3/4" socket \ wrench.

5. Tighten Both Mounts using a 3/4" socket \ wrench. Torque 65 ft-lb.
6. After installation be sure to cycle steering & check for adequate clearance.

**Photo # 1**



**Photo # 3**





**#7007 with OEM Pitman Arm. 1994-2001 1500 Models. 1994-2002 3/4 & 1 Ton Models.**

**1994-1997 1500 Models.**

**1994-1997 3/4 & 1 Ton Models.**

1. Install Skyjacker #7007 Steering Stabilizer. Install shaft eye of stabilizer to tie rod with supplied hardware. (See Photo # HB-7007) Coat straight portion of # 81004 Stud & press into stabilizer shaft eye bushing. Install large flat washer, lock washer & nut. (See Photo # 4) Tighten nut using 11/16" socket \ wrench until lock washer is compressed & bushing starts to swell slightly.
2. First attach Skyjacker Steering Stabilizer cylinder body to OEM frame mount with supplied 1/2" x 3-1/2" Bolt with 1/2" SAE Washer. Attach with supplied 1/2" Nylon Insert Lock Nut. Next, extend stabilizer shaft end out & attach stabilizer stud to center of OEM tie rod assembly stud mount. (See Photo # 5) Tighten stud into place with supplied lock nut using a 3/4" socket \ wrench. Torque 65 ft-lb.  
Tighten at frame mount using 3/4" socket \ wrench. Torque 65 ft-lb.
3. After installation be sure to cycle steering & check for adequate clearance.

**1998-2001 1500 Models.**

**1994-1999 3/4 & 1 Ton Models.**

1. Install Skyjacker #7007 Steering Stabilizer. Install shaft eye of stabilizer to tie rod with supplied hardware. (See Photo # HB-7007) Coat straight portion of # 81004 Stud & press into stabilizer shaft eye bushing. Install large flat washer, lock washer & nut. (See Photo # 4) Tighten nut using 11/16" socket \ wrench until lock washer is compressed & bushing starts to swell slightly.
2. First attach Skyjacker Steering Stabilizer cylinder body to OEM frame mount with OEM hardware. (See Photo # 4) Next, extend stabilizer shaft end out & attach stabilizer stud to center of OEM tie rod assembly stud mount. (See Photo # 5) Tighten stud into place with supplied lock nut using a 3/4" socket \ wrench. Torque 65 ft-lb.  
Tighten at frame mount. Torque 56 ft-lb.
3. After installation be sure to cycle steering & check for adequate clearance.

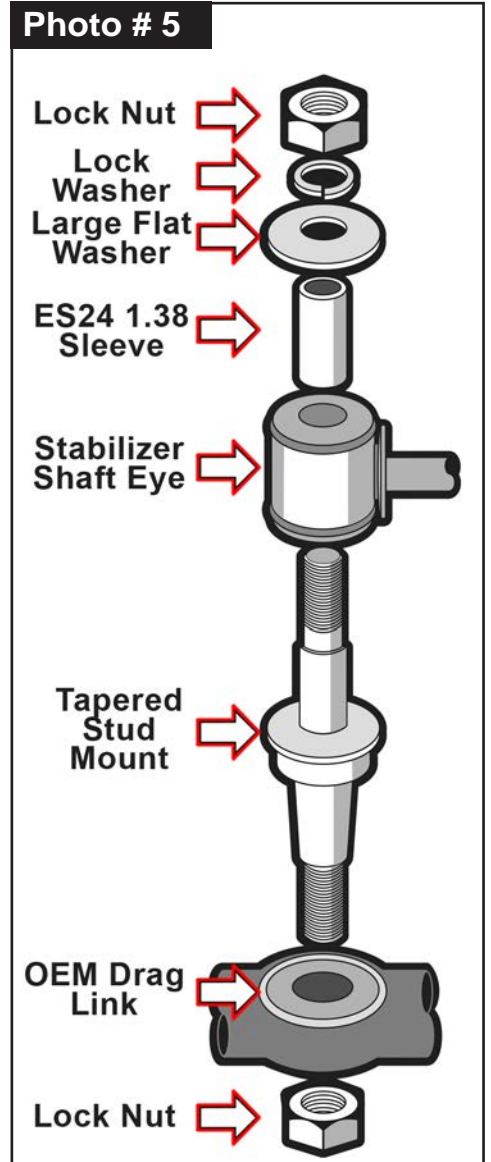
**HB-7007**



**Photo # 4**



**Photo # 5**



## #7007 with OEM Pitman Arm.

### 2001-2002 3/4 & 1 Ton Models.

1. Install Skyjacker #7007 Steering Stabilizer. Install shaft eye of stabilizer to tie rod with supplied hardware. (See Photo # HB-7007)

Place supplied 1/2" SAE Washer onto 1/2" x 3-1/2" Bolt.

Insert Tapered Sleeve into tapered hole in OEM tie rod assembly stud mount.

Insert bolt with washer through tapered sleeve \ tie rod hole.

Place supplied 5/8" x 1-1/4" Spacer, shaft eye of stabilizer (with sleeve in eye), large 1/2" USS Washer & attach with 1/2" Nylon Insert Lock Nut.

Secure, but **Do Not Completely Tighten** at this time using a 3/4" socket \ wrench. (See Photo # 1 & # 2)

2. Install cylinder eye of stabilizer to frame mount with OEM hardware.
3. Tighten at frame mount. Torque 56 ft-lb. Tighten tie rod mount using a 3/4" socket \ wrench. Torque 65 ft-lb.
4. After installation be sure to cycle steering & check for adequate clearance.

### Final Notes:

- After installation is complete, double check that all nuts & bolts are tight.
- With vehicle placed on ground, cycle steering lock to lock & inspect steering for proper operation, tightness & adequate clearance.
- After first 100 miles, check all hardware for proper torque & periodically thereafter.

TORQUE SPECIFICATIONS					
INCH SYSTEM			METRIC SYSTEM		
Bolt Size	Grade 5	Grade 8	Bolt Size	Class 8.8	Class 10.9
5/16	180 in-lbs	240 in-lbs	6MM	60 in-lbs	108 in-lbs
3/8	30 ft-lbs	35 ft-lbs	8MM	216 in-lbs	23 ft-lbs
7/16	45 ft-lbs	60 ft-lbs	10MM	32 ft-lbs	45 ft-lbs
1/2	65 ft-lbs	90 ft-lbs	12MM	55 ft-lbs	75 ft-lbs
9/16	95 ft-lbs	130 ft-lbs	14MM	85 ft-lbs	120 ft-lbs
5/8	135 ft-lbs	175 ft-lbs	16MM	130 ft-lbs	165 ft-lbs
3/4	185 ft-lbs	280 ft-lbs	18MM	170 ft-lbs	240 ft-lbs
The Above Specifications Are Not to Be Used When the Bolt Is Being Installed With a Bushing.					

**Seat Belts Save Lives. Please Wear Your Seat Belt.**



**Dual Steering Stabilizer Available, #7217**





**JESUS  
FORGIVES  
ROCKS  
DON'T**

## *Jesus Christ Died For You.*

John 3:16

For God so loved the world that He gave His only Son, so that everyone who believes in Him should not perish, but have everlasting life.  
Romans 3:23

For all have sinned; all fall short of God's glorious standard.  
Ephesians 2:8

God saved you by his special favor when you believed. And you can't take credit for this; it is a gift from God.  
Psalms 18:2

The Lord is my Rock, my fortress, and my savior; my God is my Rock, in whom I find protection. He is my shield, the strength of my salvation, and my stronghold.  
Romans 10:9-10

That if you shall confess with thy mouth the Lord Jesus, and shall believe in your heart that God hath raised him from the dead, you shall be saved. For with the heart man believeth unto righteousness; and with the mouth confession is made unto salvation.

### Pray This Simple Prayer:

God, I come to You admitting I have sinned against You and I need you to take control of my life. The Bible says anyone who calls on the name of the Lord will be saved. I am calling on You, Jesus. I ask that You come live in my heart and be the Lord over my life today. I do believe You died on the cross for me and came back to life to give me life! Thank You, Lord Jesus for a new life in You!

Now, go and tell somebody about your new life in Jesus, get a Bible, begin to read it, and go to a Bible believing church.

If you would like someone to pray with you, call Kenneth Copeland Ministries anytime at 800-600-7395.

To listen to commercial free Christian radio on the web, go to [www.887fm.org](http://www.887fm.org)

## *Jesús murió por ti.*

Juan 3:16

"Porque tanto amó Dios al mundo, que dio a su Hijo unigénito, para que todo el que cree en él no se pierda, sino que tenga vida eterna."  
Romanos 3:23

"Pues todos han pecado y están privados de la gloria de Dios."  
Efesios 2:8

"Porque por gracia ustedes han sido salvados mediante la fe; esto no procede de ustedes, sino que es el regalo de Dios."  
Salmos 18:2

"El Señor es mi roca, mi amparo, mi libertador; es mi Dios, el peñasco en que me refugio. Es mi escudo, el poder que me salva, ¡mi más alto escondite!"  
Romanos 10:9-10

"9 Que si confi esas con tu boca que Jesús es el Señor, y crees en tu corazón que Dios lo levantó de entre los muertos, serás salvo. 10 Porque con el corazón se cree para ser justifi cado, pero con la boca se confi esa para ser salvo."

### Ahora dí esta simple oración:

Dios, vengo a Ti y admito que he pecado contra Ti, necesito que tomes el control de mi vida. La Biblia dice que todo aquel que invoca el nombre del Señor escapará con vida. En este momento yo clamo ante Ti, Jesús; te pido que vengas a vivir en mi corazón y que tomes el control de mi vida. ¡Yo creo que tu moriste en la cruz y resucitaste para darme vida! ¡Gracias Señor Jesús, por una nueva vida que tengo en Ti! Amen.

Ahora ve y dile a alguien sobre la nueva vida que tienes en Cristo. Compra una Biblia y empieza a leerla. Busca una Iglesia que cree en la Biblia y hazte parte de esa Iglesia.

Si te gustaría orar con alguien, puedes llamar a este número 800-600-7395

Puedes ir a este sitio de Internet para escuchar música Cristiana sin anuncios, [www.887fm.org](http://www.887fm.org)

**Check out our favorite ministries at:**



[www.innministries.org](http://www.innministries.org)  
[www.familychurch.org](http://www.familychurch.org)  
[www.kcm.org](http://www.kcm.org)