



www.skyjacker.com

2000 - 2020 GM SUV 2WD/4WD 1" Rear Coil Spring Spacers Installation Instructions

Required Tools List:

- **Metric Sockets \ Wrenches**
(13mm, 18mm, 19mm, & 21mm)
- **Jack Stands**
- **Floor Jack**
- **Wheel Chocks**
- **Safety Glasses**
- **Plastic Fastener Removal Tool**



Before beginning the installation, read these instructions & the enclosed driver's WARNING NOTICE thoroughly & completely. Also affix the WARNING decal in the passenger compartment in clear view of all occupants. Please refer to the Parts List to insure that all parts & hardware are received prior to disassembly of the vehicle. If any parts are found to be missing, contact SKYJACKER® Customer Service at 318-388-0816 to obtain the needed items. If you have any questions or reservations about installing this product, contact SKYJACKER® Technical Assistance at 318-388-0816.

Make sure you park the vehicle on a level concrete or asphalt surface. Many times a vehicle is not level (side-to-side) from the factory, but is usually not noticed until a lift kit has been installed which makes the difference more visible. Using a measuring tape, measure the front & rear (both sides) from the ground up to the center of the fender opening above the axle. Record this information below for future reference.

Driver Side Rear: _____ Passenger Side Rear: _____

Important Notes:

- If Larger Tires (10% More Than the OEM Diameter) Are Installed, Speedometer Recalibration Will Be Necessary. Contact Your Local GM Dealer or an Authorized Skyjacker® Dealer for Details.
- After Installation, a Qualified Alignment Facility Is Required to Align the Vehicle to the OEM Specifications.

Component Box Breakdown:

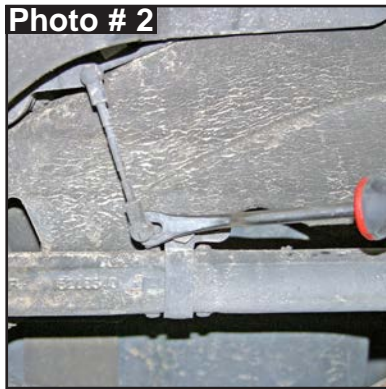
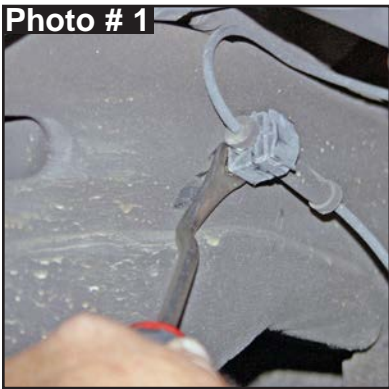
Part # C12CS

Item #	Description	Qty
C10CS-S	COIL SPRING SPACER, REAR	2
I-C12CS	INST SHEET: C12CS	1

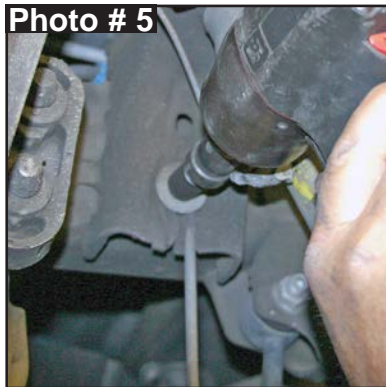
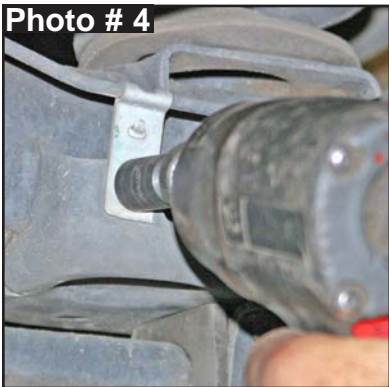
Rear Installation:

Note: Save all factory components and hardware for reuse, unless noted.

1. With the vehicle on flat level ground, set the emergency brake & chock the front tires / wheels.
2. Raise the rear of the vehicle & support with jack stands.
3. Remove the rear tires\wheels.
4. Disconnect the ABS lines from the upper control arm mounts & frame on the driver & passenger sides of the vehicle using a plastic fastener removal tool. (See Photo # 1)
5. **Auto Ride Models:** Disconnect the auto ride switch extension rods from the upper control arms & the air supply lines from the rear shocks using a plastic fastener removal tool. (See Photo # 2 & # 3) **Note:** Be careful not to damage the extension rods & air supply lines.



6. Disconnect the brake line bracket from the differential bracket using a 13mm socket\wrench.
7. Disconnect the hard brake line bracket next to the lower track bar mount on the driver side & on the axle tube on the passenger side using a 13mm socket\wrench. (See Photo # 4)
8. Disconnect the emergency brake cable bracket from the passenger side frame using a 13mm socket\wrench. (See Photo # 5)
9. Using a jack to support the rear differential, disconnect the rear sway bar end links at the lower mounts using a 18mm & 19mm socket\wrench. (See Photo # 6)

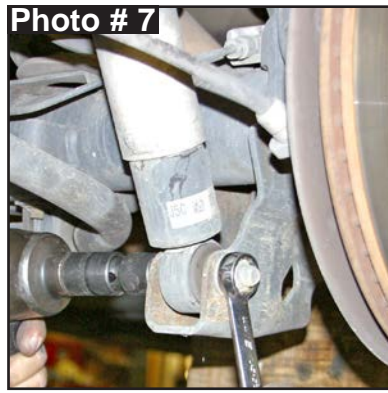


10. Disconnect the rear shocks at the lower mounts using a 21mm socket \ wrench. (See Photo # 7)

11. Lower the rear differential & remove the rear coil springs & isolator pads.

12. Install the Skyjacker # C10CS-S rear coil spring spacer over the lower coil spring mount.

13. Install the coil spring isolator on top of the Skyjacker coil spring spacer & install the rear coil springs. (See Photo # 8)



14. Connect the rear shocks to the lower mounts using a 21mm socket \ wrench. (See Photo # 7)

15. Using a jack to support the rear differential, connect the rear sway bar end links at the lower mounts using a 18mm & 19mm socket \ wrench. (See Photo # 6)

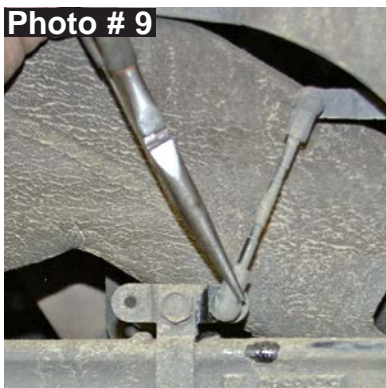
16. Connect the emergency brake cable bracket to the passenger side frame using a 13mm socket \ wrench. (See Photo # 5)

17. Connect the hard brake line bracket next to the lower track bar mount on the driver side & on the axle tube on the passenger side using a 13mm socket \ wrench. (See Photo # 4)

18. Connect the brake line bracket to the differential bracket using a 13mm socket \ wrench.

19. **Auto Ride Models:** Connect the auto ride switch extension rods to the upper control arms & the air supply lines to the rear shocks. **Note:** Be careful not to damage the extension rods & air supply lines. (See Photo # 9 & # 10)

20. Connect the ABS lines to the upper control arm mounts & frame on the driver & passenger sides of the vehicle. (See Photo # 11)



21. Install the rear tires \ wheels & lower the vehicle to the ground.

Final Notes:

- After the installation is complete, double check that all nuts & bolts are tight. Refer to the following chart for the proper torque specifications. (**Note:** Do not re-tighten the nuts & bolts where thread lock compound was used.)
- With the vehicle placed on the ground, cycle the steering lock to lock & inspect the steering, suspension, brake lines, front & rear drivelines, fuel lines & wiring harnesses for proper operation, tightness & adequate clearance.
- Have the headlights readjusted to the proper settings.
- Have a qualified alignment center align the vehicle to the OEM specifications.
- After the first 100 miles, check all hardware for the proper torque & periodically thereafter.

TORQUE SPECIFICATIONS					
<u>INCH SYSTEM</u>			<u>METRIC SYSTEM</u>		
Bolt Size	Grade 5	Grade 8	Bolt Size	Class 8.8	Class 10.9
5/16	15 FT LB	20 FT LB	6MM	5 FT LB	9 FT LB
3/8	30 FT LB	35 FT LB	8MM	18 FT LB	23 FT LB
7/16	45 FT LB	60 FT LB	10MM	32 FT LB	45 FT LB
1/2	65 FT LB	90 FT LB	12MM	55 FT LB	75 FT LB
9/16	95 FT LB	130 FT LB	14MM	85 FT LB	120 FT LB
5/8	135 FT LB	175 FT LB	16MM	130 FT LB	165 FT LB
3/4	185 FT LB	280 FT LB	18MM	170 FT LB	240 FT LB

The above specifications are not to be used when the bolt is being installed with a bushing.

Seat Belts Save Lives, Please Wear Your Seat Belt.