

2007-2018 GM 1500 Pickup & SUV 4WD 3.5" Suspension Lift Installation Instructions

Required Tools List:

- **SAE Hex Key & SAE Sockets \ Wrenches**
(5/32" Hex Key Socket & 7/16", 9/16", 3/4", 7/8")
- **Metric Hex Key & Metric Sockets \ Wrenches**
(10mm, 13mm, 15mm, 18mm, 19mm, 21mm & 22mm)
- **Plastic Fastner Removal Tool**
- **Standard Screwdriver**
- **Ball Peen Hammer**
- **Grease Gun**
- **Wheel Chock**
- **Jack Stands**
- **Torque Wrench**
- **Safety Glasses**
- **Floor Jack**
- **Paint Marker**
- **Measuring Tape**



Before beginning installation, read these instructions & enclosed driver's WARNING NOTICE thoroughly & completely. Also affix WARNING decal in passenger compartment in clear view of all occupants. Please refer to Parts List to insure that all parts & hardware are received prior to disassembly of vehicle. If any parts are found to be missing, contact SKYJACKER® Customer Service at 318-388-0816 to obtain needed items. If you have any questions or reservations about installing this product, contact SKYJACKER® Technical Assistance at 318-388-0816.

Make sure you park vehicle on a level concrete or asphalt surface. Many times a vehicle is not level (side-to-side) from factory, but is usually not noticed until a lift kit has been installed which makes difference more visible. Using a measuring tape, measure front & rear (both sides) from ground up to center of fender opening above axle. Record this information below for future reference.

Driver Side Front: _____ / _____ BEFORE / AFTER	Passenger Side Front: _____ / _____ BEFORE / AFTER
Driver Side Rear: _____ / _____ BEFORE / AFTER	Passenger Side Rear: _____ / _____ BEFORE / AFTER

Important Notes:

- This Suspension Lift is NOT Designed to Fit the Following Models:
 - Chevrolet or GMC Models With All Wheel Drive
 - Chevrolet or GMC 2 Wheel Drive Models With 16 Inch Wheels
 - Chevrolet or GMC Models With Magnetic Ride Control
- If Larger Tires (10% More Than the OEM Diameter) Are Installed, Speedometer Recalibration Will Be Necessary. Contact Your Local GM Dealer or an Authorized Skyjacker® Dealer for Details.
- After Installation, a Qualified Alignment Facility Is Required to Align the Vehicle to the OEM Specifications.

Component Box Breakdown:**Part # C7350**

Item #	Description	Qty
GM735UCA-LS	UCA, DR STEEL KNUCKLE	1
GM735UCA-RS	UCA, PA STEEL KNUCKLE	1
GM1935MS-S	SPACER, FRONT, 3.5	2
GM735SKD-B	DIFF SKID PLATE, FRONT	1
H-BOX C7350P	HDWR BOX: C7350P	1

Part # C7350PB

Item #	Description	Qty
GM735UCA-LS	UCA, DR STEEL KNUCKLE	1
GM735UCA-RS	UCA, PA STEEL KNUCKLE	1
GM1935MS-S	SPACER, FRONT, 3.5	2
GM735SKD-B	DIFF SKID PLATE, FRONT	1
H-BOX C7350P	HDWR BOX: C7350P	1
B8517 (REAR)	BLACK MAX SHOCK W/BLK BOOT	2

Part # C7350PH

Item #	Description	Qty
GM735UCA-LS	UCA, DR STEEL KNUCKLE	1
GM735UCA-RS	UCA, PA STEEL KNUCKLE	1
GM1935MS-S	SPACER, FRONT, 3.5	2
GM735SKD-B	DIFF SKID PLATE, FRONT	1
H-BOX C7350P	HDWR BOX: C7350P	1
H7017 (REAR)	HYDRO SHOCK W/RED BOOT	2

Part # C7350PM

Item #	Description	Qty
GM735UCA-LS	UCA, DR STEEL KNUCKLE	1
GM735UCA-RS	UCA, PA STEEL KNUCKLE	1
GM1935MS-S	SPACER, FRONT, 3.5	2
GM1935SKD-B	DIFF SKID PLATE, FRONT	1
H-BOX C7350P	HDWR BOX: C7350P	1
M9517 (REAR)	M95 MONOTUBE SHOCK	2

Part # C7350PN

Item #	Description	Qty
GM735UCA-LS	UCA, DR STEEL KNUCKLE	1
GM735UCA-RS	UCA, PA STEEL KNUCKLE	1
GM1935MS-S	SPACER, FRONT, 3.5	2
GM735SKD-B	DIFF SKID PLATE, FRONT	1
H-BOX C7350P	HDWR BOX: C7350P	1
N8017 (REAR)	NITRO SHOCK W/RED BOOT	2

Part # C7350V

Item #	Description	Qty
GM735UCA-LS	UCA, DR STEEL KNUCKLE	1
GM735UCA-RS	UCA, PA STEEL KNUCKLE	1
GM1935MS-S	SPACER, FRONT, 3.5	2
GM735RMS-S	SPACER, REAR, 2.75	2
GM735RSE-D	SHOCK BRACKET, REAR, DR	1
GM735RSE-P	SHOCK BRACKET, REAR, PA	1
GM735SKD-B	DIFF SKID PLATE, FRONT	1
H-BOX C7350V	HDWR BOX: C7350P	1

Component Box Breakdown:**Part # C14350**

Item #	Description	Qty
GM735UCA-LS	UCA, DR STEEL KNUCKLE	1
GM735UCA-RS	UCA, PA STEEL KNUCKLE	1
GM1935MS-S	SPACER, FRONT, 3.5	2
GM735SKD-B	DIFF SKID PLATE, FRONT	1
H-BOX C7350P	HDWR BOX: C7350P	1

Part # C14350PB

Item #	Description	Qty
GM735UCA-LS	UCA, DR STEEL KNUCKLE	1
GM735UCA-RS	UCA, PA STEEL KNUCKLE	1
GM1935MS-S	SPACER, FRONT, 3.5	2
GM735SKD-B	DIFF SKID PLATE, FRONT	1
H-BOX C7350P	HDWR BOX: C7350P	1
B8517 (REAR)	BLACK MAX SHOCK W/BLK BOOT	2

Part # C14350PH

Item #	Description	Qty
GM735UCA-LS	UCA, DR STEEL KNUCKLE	1
GM735UCA-RS	UCA, PA STEEL KNUCKLE	1
GM1935MS-S	SPACER, FRONT, 3.5	2
GM1935SKD-B	DIFF SKID PLATE, FRONT	1
H-BOX C7350P	HDWR BOX: C7350P	1
H7017 (REAR)	HYDRO SHOCK W/RED BOOT	2

Part # C14350PM

Item #	Description	Qty
GM735UCA-LS	UCA, DR STEEL KNUCKLE	1
GM735UCA-RS	UCA, PA STEEL KNUCKLE	1
GM1935MS-S	SPACER, FRONT, 3.5	2
GM735SKD-B	DIFF SKID PLATE, FRONT	1
H-BOX C7350P	HDWR BOX: C7350P	1
M9517 (REAR)	M95 MONOTUBE SHOCK	2

Part # C14350PN

Item #	Description	Qty
GM735UCA-LS	UCA, DR STEEL KNUCKLE	1
GM735UCA-RS	UCA, PA STEEL KNUCKLE	1
GM1935MS-S	SPACER, FRONT, 3.5	2
GM735SKD-B	DIFF SKID PLATE, FRONT	1
H-BOX C7350P	HDWR BOX: C7350P	1
N8017 (REAR)	NITRO SHOCK W/RED BOOT	2

Component Box Breakdown:**Part # C14350A**

Item #	Description	Qty
GM1435UCA-LA	UCA, DR ALUMINUM KNUCKLE	1
GM1435UCA-RA	UCA, PA ALUMINUM KNUCKLE	1
GM1935MS-S	SPACER, FRONT, 3.5	2
GM735SKD-B	DIFF SKID PLATE, FRONT	1
H-BOX C7350P	HDWR BOX: C7350P	1

Part # C14350PAB

Item #	Description	Qty
GM1435UCA-LA	UCA, DR ALUMINUM KNUCKLE	1
GM1435UCA-RA	UCA, PA ALUMINUM KNUCKLE	1
GM1935MS-S	SPACER, FRONT, 3.5	2
GM735SKD-B	DIFF SKID PLATE, FRONT	1
H-BOX C7350P	HDWR BOX: C7350P	1
B8517 (REAR)	BLACK MAX SHOCK W/BLK BOOT	2

Part # C14350PAH

Item #	Description	Qty
GM1435UCA-LA	UCA, DR ALUMINUM KNUCKLE	1
GM1435UCA-RA	UCA, PA ALUMINUM KNUCKLE	1
GM1935MS-S	SPACER, FRONT, 3.5	2
GM735SKD-B	DIFF SKID PLATE, FRONT	1
H-BOX C7350P	HDWR BOX: C7350P	1
H7017 (REAR)	HYDRO SHOCK W/RED BOOT	2

Part # C14350PAM

Item #	Description	Qty
GM1435UCA-LA	UCA, DR ALUMINUM KNUCKLE	1
GM1435UCA-RA	UCA, PA ALUMINUM KNUCKLE	1
GM1935MS-S	SPACER, FRONT, 3.5	2
GM735SKD-B	DIFF SKID PLATE, FRONT	1
H-BOX C7350P	HDWR BOX: C7350P	1
M9517 (REAR)	M95 MONOTUBE SHOCK	2

Part # C14350PAN

Item #	Description	Qty
GM1435UCA-LA	UCA, DR ALUMINUM KNUCKLE	1
GM1435UCA-RA	UCA, PA ALUMINUM KNUCKLE	1
GM1935MS-S	SPACER, FRONT, 3.5	2
GM735SKD-B	DIFF SKID PLATE, FRONT	1
H-BOX C7350P	HDWR BOX: C7350P	1
N8017 (REAR)	NITRO SHOCK W/RED BOOT	2

Part # C15350V

Item #	Description	Qty
GM735UCA-LS	UCA, DR STEEL KNUCKLE	1
GM735UCA-RS	UCA, PA STEEL KNUCKLE	1
GM1935MS-S	SPACER, FRONT, 3.5	2
GM735RMS-S	SPACER, REAR, 2.75	2
GM735RSE-D	SHOCK BRACKET, REAR, DR	1
GM735RSE-P	SHOCK BRACKET, REAR, PA	1
GM735SKD-B	DIFF SKID PLATE, FRONT	1
H-BOX C7350V	HDWR BOX: C7350P	1

Component Box Breakdown:**Part # C15350VA**

Item #	Description	Qty
GM1435UCA-LA	UCA, DR ALUMINUM KNUCKLE	1
GM1435UCA-RA	UCA, PA ALUMINUM KNUCKLE	1
GM1935MS-S	SPACER, FRONT, 3.5	2
GM735RMS-S	SPACER, REAR, 2.75	2
GM735RSE-D	SHOCK BRACKET, REAR, DR	1
GM735RSE-P	SHOCK BRACKET, REAR, PA	1
GM735SKD-B	DIFF SKID PLATE, FRONT	1
H-BOX C7350P	HDWR BOX: C7350P	1

Part # C17350A

Item #	Description	Qty
GM1435UCA-LA	UCA, DR ALUMINUM KNUCKLE	1
GM1435UCA-RA	UCA, PA ALUMINUM KNUCKLE	1
GM1935MS-S	SPACER, FRONT, 3.5	2
GM735SKD-B	DIFF SKID PLATE, FRONT	1
H-BOX C7350P	HDWR BOX: C7350P	1

Part # C17350PAB

Item #	Description	Qty
GM1435UCA-LA	UCA, DR ALUMINUM KNUCKLE	1
GM1435UCA-RA	UCA, PA ALUMINUM KNUCKLE	1
GM1935MS-S	SPACER, FRONT, 3.5	2
GM735SKD-B	DIFF SKID PLATE, FRONT	1
H-BOX C7350P	HDWR BOX: C7350P	1
B8517 (REAR)	BLACK MAX SHOCK W/BLK BOOT	2

Part # C17350PAH

Item #	Description	Qty
GM1435UCA-LA	UCA, DR ALUMINUM KNUCKLE	1
GM1435UCA-RA	UCA, PA ALUMINUM KNUCKLE	1
GM1935MS-S	SPACER, FRONT, 3.5	2
GM735SKD-B	DIFF SKID PLATE, FRONT	1
H-BOX C7350P	HDWR BOX: C7350P	1
H7017 (REAR)	HYDRO SHOCK W/RED BOOT	2

Part # C17350PAM

Item #	Description	Qty
GM1435UCA-LA	UCA, DR ALUMINUM KNUCKLE	1
GM1435UCA-RA	UCA, PA ALUMINUM KNUCKLE	1
GM1935MS-S	SPACER, FRONT, 3.5	2
GM735SKD-B	DIFF SKID PLATE, FRONT	1
H-BOX C7350P	HDWR BOX: C7350P	1
M9517 (REAR)	M95 MONOTUBE SHOCK	2

Part # C17350PAN

Item #	Description	Qty
GM1435UCA-LA	UCA, DR ALUMINUM KNUCKLE	1
GM1435UCA-RA	UCA, PA ALUMINUM KNUCKLE	1
GM1935MS-S	SPACER, FRONT, 3.5	2
GM735SKD-B	DIFF SKID PLATE, FRONT	1
H-BOX C7350P	HDWR BOX: C7350P	1
N8017 (REAR)	NITRO SHOCK W/RED BOOT	2

Hardware Box Breakdown:**Part # H-BOX C7350P**

Item #	Description	Qty
RBF20	REAR BLOCK, 2 FLAT	2
916X212X1012U	9/16 X 2-1/2 X 10-1/2 U-BOLT	4
HB-10MM/NFN	HDWR BAG: 10MM FLANGE NUTS	1
HB-916	HDWR BAG: 9/16 N/I LOCK NUT	1
HB-C7350DS	HDWR BAG: DIFF SPACER C7350	1
I-C7350	INST SHEET: C7350 / C14350	1

Part # H-BOX C7350V

Item #	Description	Qty
SBE503-L	SWAY BAR END LINK, REAR	2
HB-10MM/NFN	HDWR BAG: 10MM FLANGE NUTS	1
HB-C7350DS	HDWR BAG: DIFF SPACER C7350	1
HB-C7350RMS	HDWR BAG: C7350 SPACER, RR	1
HB-C7350RSE	HDWR BAG: SHOCK BRKT, RR	1
HB-SBE503	HDWR BAG: SBE503	1
I-C7350	INST SHEET: C7350 / C14350	1

Hardware Bag Breakdown:**Part # HB-10MM/NFN**

Item #	Description	Qty
10MMX1.5NFN	10MM X 1.5 N/I FLANGE NUT	6

Part # HB-916

Item #	Description	Qty
916FTN	9/16 FINE THREAD N/I LOCK NUT	8

Hardware Bag Breakdown:**Part # HB-C7350DS**

Item #	Description	Qty
TCLS10-B	DIFF LOWERING SPACER, 1	2
14CTN	1/4 COARSE THRD N/I LOCK NUT	2
14SAEW	1/4 SAE WASHER	2
12X120MMB	12MM X 120MM METRIC BOLT	2
12MMN	12MM METRIC N/I LOCK NUT	2
716SAEW	7/16 SAE WASHER	4

Part # HB-C7350RMS

Item #	Description	Qty
GM735RMS-WASH	SPACER WASHER, GM1500 RR	2
38X334CTB	3/8 X 3-3/4 COARSE THRD BOLT	2
38SAEW	3/8 SAE WASHER	2

Part # HB-C7350RSE

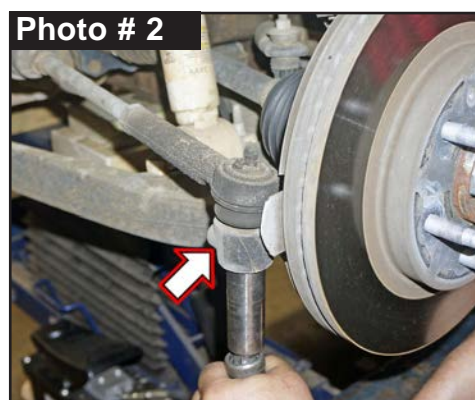
Item #	Description	Qty
916X112FTB	9/16 X 1-1/2 FINE THREAD BOLT	2
916X3FTB	9/16 X 3 FINE THREAD BOLT	2
916FTN	9/16 FINE THREAD N/I LOCK NUT	4
916SAEW	9/16 SAE WASHER	8

Part # HB-SBE503

Item #	Description	Qty
HG5815-K	BLACK HOURGLASS BUSHING	4
141509	ES25 SLEEVE	4
12X3FTB	1/2 X 3 FINE THREAD BOLT	4
12FTN	1/2 FINE THREAD N/I LOCK NUT	4
12SAEW	1/2 SAE WASHER	8

Front Installation: Note: Save all factory components & hardware for reuse, unless noted.

1. With vehicle on flat level ground, set emergency brake & chock rear tires \ wheels.
2. Raise front of vehicle, support frame rails using jack stands at indicated lift points in OEM service manual.
3. Remove the front tires \ wheels using a 22mm socket.
4. Remove the OEM front skid plates located in front & under the front differential using a 15mm socket. (See Photo # 1)
5. If equipped, disconnect all electrical connections from the OEM electric power steering rack.
6. Disconnect OEM outer tie rod ends from OEM steering knuckles using a 21mm socket \ wrench. (See Photo # 2) **Note:** It may be necessary to strike the OEM steering knuckles to dislodge the OEM tie rod ends. Be careful not to damage the OEM tie rod ends.



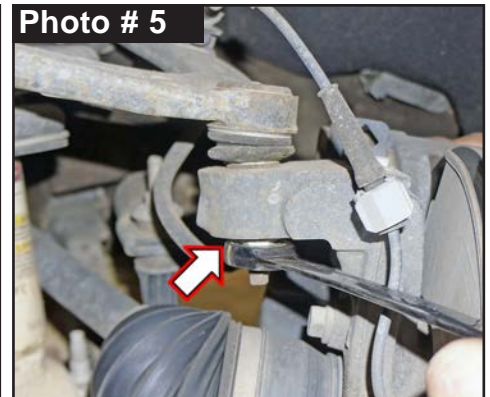
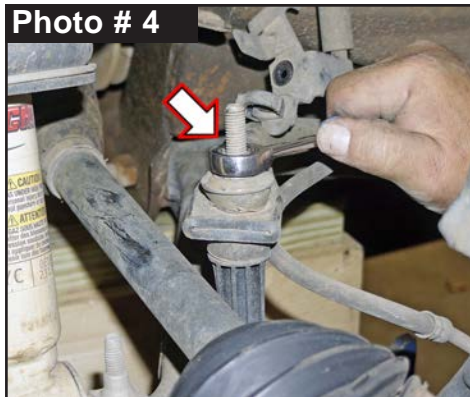
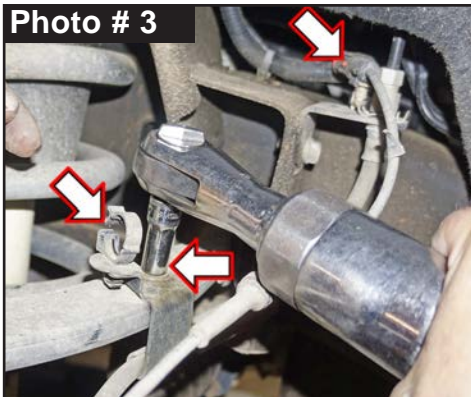
7. Disconnect OEM ABS line from frame & OEM Upper Control Arm (UCA) clip. (See Photo # 3)
Disconnect OEM brake line bracket from OEM UCA using a 10mm socket \ wrench. (See Photo # 3)

8. Disconnect OEM sway bar end link from OEM sway bar using a 15mm socket \ wrench. (See Photo # 4)

9. Support the bottom of OEM steering knuckle with jack. Loosen, but do not remove upper OEM ball joint nut from OEM knuckle using a 18mm wrench. (See Photo # 5)

To unseat upper OEM ball joint taper, strike ball joint boss of knuckle using ball peen hammer to dislodge. **Note:** ONLY strike knuckle portion only.

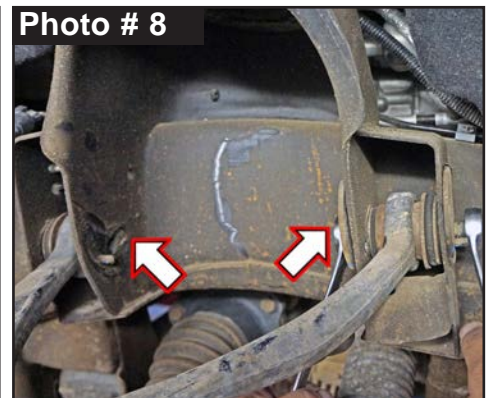
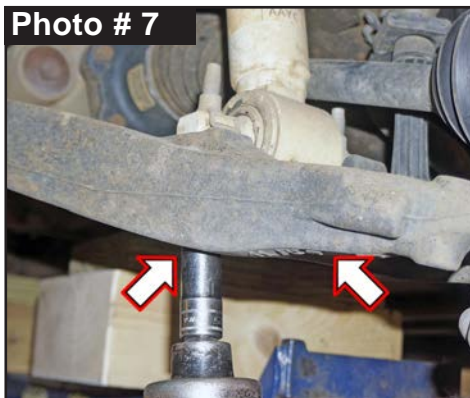
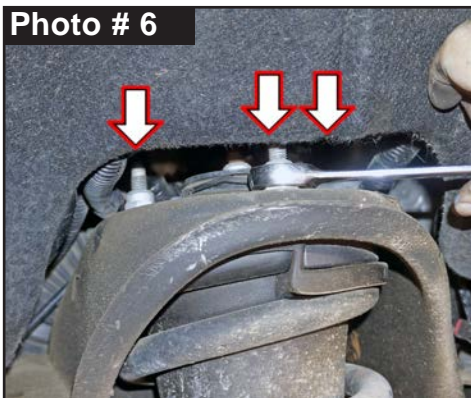
Remove nut & remove ball joint from knuckle. **Tech Note:** You may need to pry upper control arm down to disconnect ball joint.



10. Disconnect wiring harness clips from OEM upper strut mounting nuts. Disconnect three (3) OEM upper strut mounting nuts from frame mount using a 18mm socket \ wrench. (See Photo # 6) **Note:** Do Not remove center strut rod nut.

Disconnect two (2) OEM lower strut mounting nuts from lower control arm mount using a 15mm socket \ wrench. (See Photo # 7) Remove OEM strut assembly.

11. Mark the location of OEM Upper Control Arm (UCA) alignment cams.
Remove OEM UCA using a 21mm socket \ wrench. (See Photo # 8)



12. While supporting the front differential, remove the front differential two (2) rearward OEM mount bolts using a 15mm & a 18mm socket \ wrench. (See Photo # 9)

13. Slightly lower the front differential. Install Skyjacker # TCLS10-B Differential Lowering Spacer between OEM front differential mounts & the frame. (See Photo # 10)

Install with supplied 12mm x 120mm bolt with 7/16" SAE Washer bottom & with a 7/16" SAE Washer & 12mm Nylon Insert Lock Nut top using a 19mm socket \ wrench. Torque 50 ft-lbs.

14. Install Skyjacker # GM735SKD-B Front Differential Skid Plate with OEM hardware using a 15mm socket \ wrench. (See Photo # 11)

Photo # 9



Photo # 10



Photo # 11



15. Install Skyjacker # GM1935MS-S Front Strut Spacer on top of OEM strut assembly with OEM hardware using a 18mm wrench. (See Photo # 12) **Tech Note:** Start all three (3) OEM flange nuts before beginning tightening sequence. Torque 25 ft-lbs.
16. Install Skyjacker \ OEM strut assembly into upper strut mount at frame with supplied 10mm Nylon Insert Flange Nuts using a 15mm socket \ wrench. (See Photos # 13) Torque 25 ft-lbs. Attach Skyjacker \ OEM strut assembly to lower control arm mount with OEM hardware using a 15mm socket \ wrench. (See Photos # 7) Secure, but **Do Not Completely Tighten**.
17. **Note:** Skyjacker UCA are Side Specific: Part number is on silver bar code label. # L Driver & # R Passenger. Install Skyjacker UCA to appropriate side of vehicle. Align the location of the OEM alignment cams with OEM hardware using a 21mm socket \ wrench. (See Photo # 14)
- Secure, but **Do Not Completely Tighten** control arm hardware at this time. To set bushings properly for ride height, these will be tightened once vehicle is on ground with full vehicle weight on tires \ wheels.

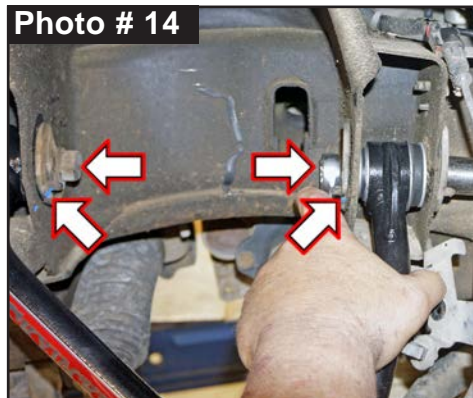
Photo # 12



Photo # 13



Photo # 14



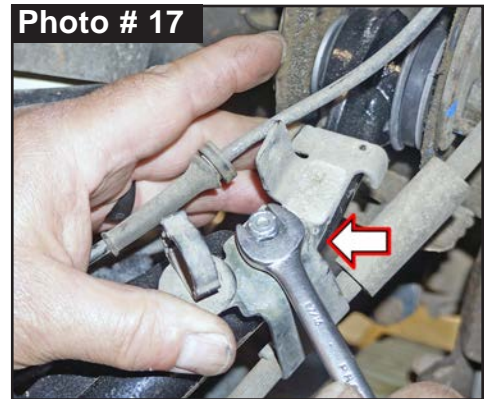
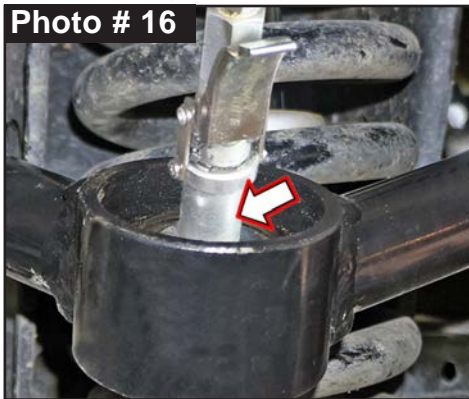
18. While supporting OEM steering knuckle, connect Skyjacker UCA ball joint nut to OEM knuckle with supplied castle nut using a 18mm & a 21mm socket \ wrench. (See Photo # 15) Align cotter pin. **CAUTION:** Ensure castle nut & cotter pin align properly into Skyjacker UCA ball joint. Never loosen castle nut to align cotter pin; always tighten.

Photo # 15



19. Grease Skyjacker UCA ball joint using a grease gun.

CAUTION: Skyjacker UCA Ball Joint is not fully greased from factory. GREASE Must Be Added to Skyjacker UCA Ball Joint using a grease gun. (See Photo # 16)

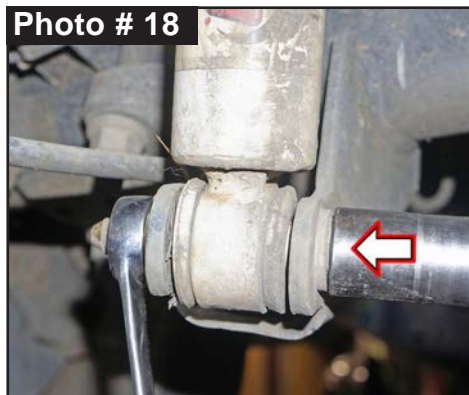


20. Connect OEM brake line bracket to Skyjacker UCA with supplied 1/4 SAE Washer & 1/4" Nylon Insert Lock Nut using a 7/16" socket \ wrench. (See Photo # 17)
21. Connect OEM sway bar end link to OEM sway bar with OEM hardware using a 15mm socket \ wrench. (See Photo # 4)
22. Connect OEM ABS line to frame & OEM clip on Skyjacker UCA. (See Photo # 3)
23. Connect OEM outer tie rod end to OEM steering knuckle using a 21mm socket \ wrench. (See Photo # 2)
24. If equipped, connect all electrical connections to the OEM electric power steering rack.
25. Install the front tires \ wheels using a 22mm socket & lower the front of the vehicle to the ground.

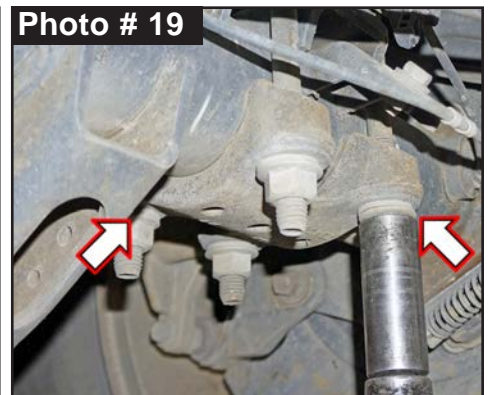
Rear Installation Pick-Up Models: (SUV Model Go to Page 9)

Note: Save all factory components & hardware for reuse, unless noted.

1. Chock front tires \ wheels. Raise rear of vehicle & support frame rails using jack stands at indicated lift points in OEM service manual.
2. Remove rear tires \ wheels using a 22mm socket.
3. Disconnect OEM ABS lines from the rear differential.
4. Support rear axle with a hydraulic jack. Allow ample room to lower rear axle. Remove the OEM rear shocks using a 21mm socket \ wrench. (See Photo # 18)



5. Remove OEM u-bolts using a 21mm socket \ wrench. (See Photo # 19)
Discard u-bolts & hardware. Retain lower OEM u-bolt plate.



6. While checking for appropriate slack in ABS lines, brake lines, rear emergency brake cables, & etc. Lower axle away from leaf springs to allow clearance for block.

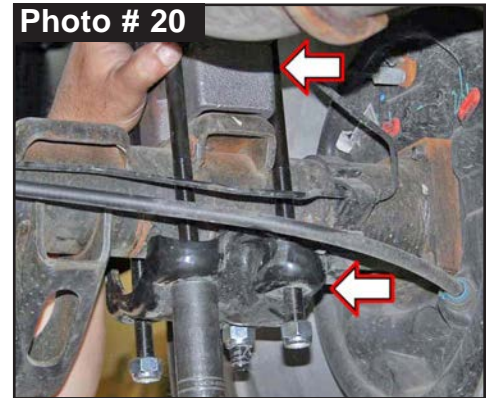
Clean spring pads of all debris. Position Skyjacker # RBF20 2" Flat Block on top of axle pad. (See Photo # 20)

Raise axle to mate leaf springs to lift blocks.

Note: Be sure that leaf spring center bolt head seats properly into block & that block pin seats properly into top of axle pad.

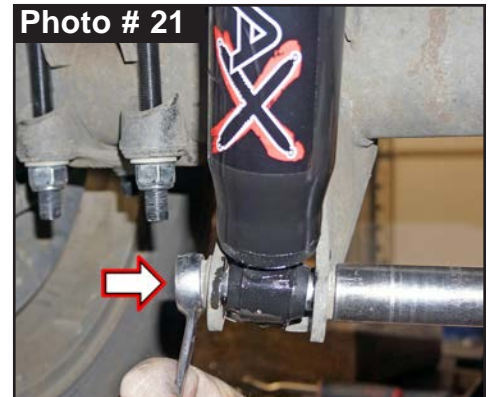
7. Install Skyjacker 9/16" U-Bolts over OEM top plate\leaf springs down into OEM u-bolt plate. Install supplied 9/16" Nylon Insert Nuts using a 7/8" socket\wrench. (See Photo # 20)

Torque u-bolts evenly using an 'X' crisscross tightening sequence. Torque 125 ft.-lbs.



NOTE: Kit With HYDRO, NITRO, Black MAX, or M95 Monotube: Proceed to Step 8.
Kit With ADX 2.0 Remote Reservoir: Proceed to Step 9.

8. Install Skyjacker rear shock. Connect upper shock mount with OEM hardware using a 21mm socket\wrench. Connect lower shock mount with OEM hardware using a 21mm socket\wrench. (See Photo # 21)
Secure, but **Do Not Completely Tighten** at this time.
9. Locate Skyjacker ADX rear shock. Loosely assemble two (2) supplied reservoir clamps with two (2) supplied hex head bolts using a 5/32" Hex Key socket. Position clamp into place around shock body & reservoir cylinder. Secure, but **Do Not Completely Tighten** at this time.



Install Skyjacker ADX rear shock. Connect upper shock mount with OEM hardware using a 21mm socket\wrench. Connect lower shock mount with OEM hardware using a 21mm socket\wrench. Secure, but **Do Not Completely Tighten** at this time.

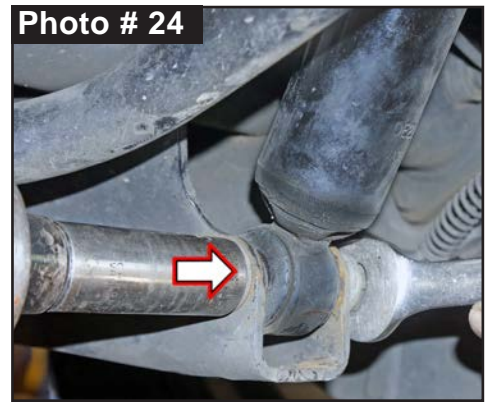
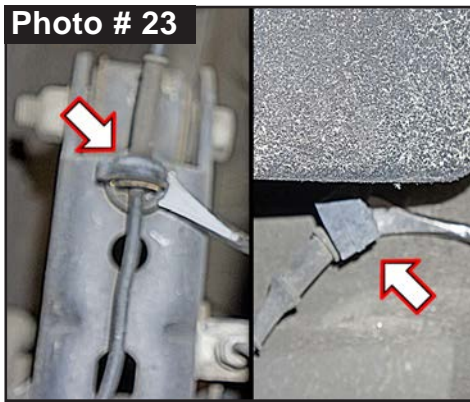
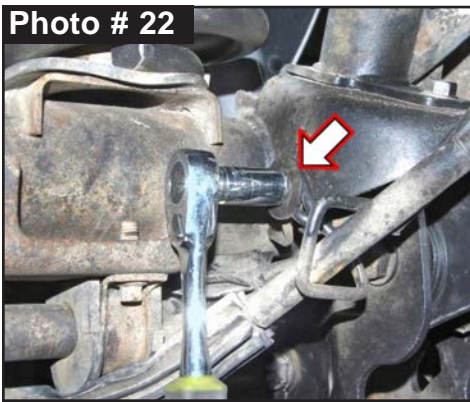
CAUTION: Make Sure ADX Shock Reservoir\Reservoir Hose Does Not & Will Not Make Contact with Anything Throughout the Full Travel Cycle of the Suspension. (frame, frame brackets, springs, brake lines, exhaust, etc.) For proper clearance, it may be necessary to change the location or orientation of the reservoir on the shock body. Use a 5/32" Hex Key socket to loosen clamps to position reservoir cylinder as needed.

10. Connect OEM ABS lines to the rear differential.
11. Install the rear tires\wheels using a 22mm socket & lower the rear of the vehicle to the ground.

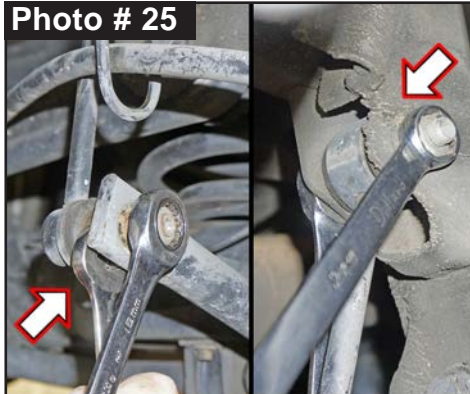
Rear Installation SUV Models:

Note: Save all factory components & hardware for reuse, unless noted.

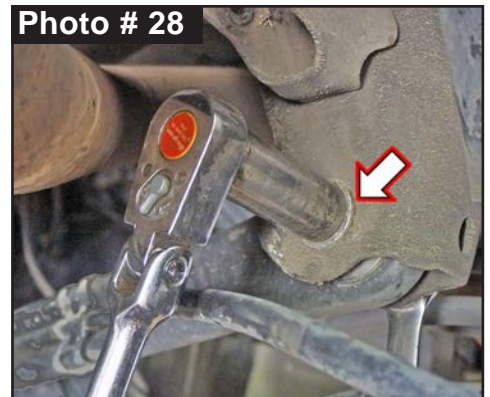
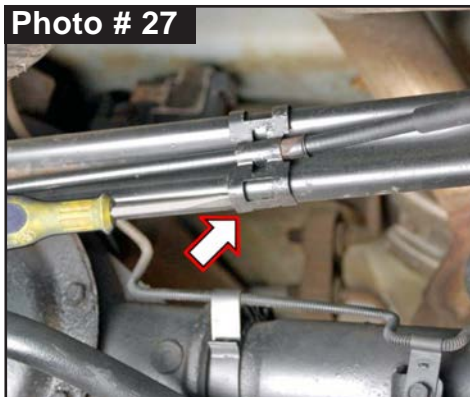
1. Chock front tires \ wheels. Raise rear of vehicle & support frame rails using jack stands at indicated lift points in OEM service manual.
2. Remove rear tires \ wheels using a 22mm socket.
3. Disconnect OEM e-brake cable bracket from passenger side frame using a 13mm socket \ wrench. (See Photo # 22)
4. Disconnect OEM ABS line clip from rear differential at link arm mount using a plastic fastner removal tool. Follow ABS line upward & disconnect ABS line clip from upper frame mount. (See Photo # 23)
5. Support the rear differential & remove OEM rear shocks using a 21mm socket \ wrench. (See Photo # 24)



6. Remove OEM rear sway bar end link at sway bar & at frame mount using a 18mm socket \ wrench. (See Photo # 25)
7. Disconnect OEM rear brake line bracket from rear differential using a 13mm socket \ wrench. (See Photo # 26)



8. Disconnect OEM e-brake cable bracket from track bar using a plastic fastner removal tool or standard screwdriver. (See Photo # 27)



Disconnect OEM rear track bar from the frame using a 21mm socket \ wrench. (See Photo # 28)

9. While checking for appropriate slack in ABS lines, brake lines, differential vent hose, & etc. Lower axle away from coils & remove the OEM rear coil springs
10. Install Skyjacker # GM735RMS-WASH Rear Coil Spring Spacer Washer (nut plate) on top of OEM rear coil spring upper mount. (See Photo # 29)

Install Skyjacker # GM735RMS-S Rear Coil Spring Spacer into nut plate washer with supplied 3/8" x 3-3/4" bolt, 3/8" SAE Washer using a 9/16" socket. (See Photo # 30) Torque 50 ft-lbs.

Install OEM rear coil spring & isolator. **Note:** Be sure OEM upper coil spring isolator is properly aligned with Skyjacker Coil Spring Spacer. (See Photo # 31) **Tech Note:** Be sure coil spring is seated properly at lower axle mount by rotating the coil until the pigtail hits the spring stop.

Photo # 29



Photo # 30

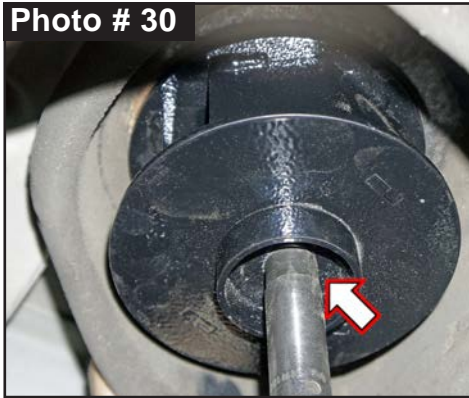
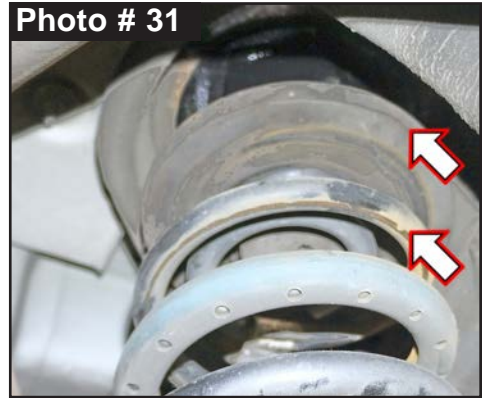


Photo # 31



11. **Note:** Skyjacker Rear Lower Shock Relocation Brackets are Side Specific: Part number is on silver bar code label. # GM735RSE-D Driver & # GM735RSE-P Passenger.

Install Skyjacker inside of OEM rear lower shock. (See Photo # 32)

At the bottom of OEM shock mount bracket, utilize OEM hole to attach the Skyjacker bracket with supplied 9/16" x 1-1/2" Fine Thread Bolt with 9/16" SAE Washer bottom & 9/16" SAE Washer with 9/16" Nylon Lock Nut on top of bracket using a 7/8" socket \ wrench. (See Photo # 32 & # 33)

Through the OEM shock mount hole, attach bracket with supplied 9/16" x 3" Fine Thread Bolt with 9/16" SAE Washer running inside-to-outside & 9/16" SAE Washer with 9/16" Nylon Lock Nut on outside of mount using a 7/8" socket \ wrench. (See Photo # 32 & # 33)

12. Connect OEM rear shocks to Skyjacker shock bracket with OEM hardware using a 21mm socket \ wrench. (See Photo # 34)

Photo # 32



Photo # 33

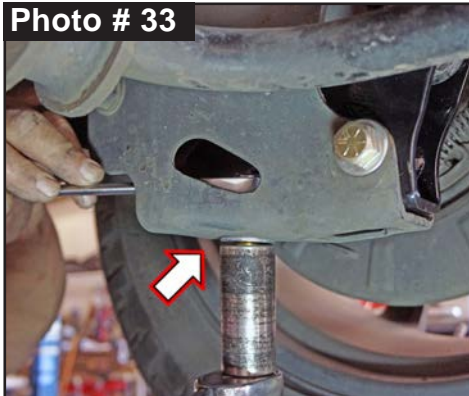
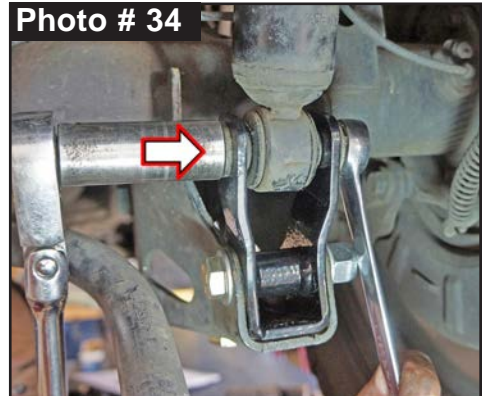


Photo # 34



13. Locate Skyjacker # Skyjacker # SBE503-L Rear Sway Bar End Links. Coat supplied Hourglass Bushings & # ES25 Steel Sleeves with a water resistant grease & press into upper & lower end link mounts.

Install Skyjacker End Link at upper frame mount with supplied 1/2" x 3" Fine Thread Bolt with 1/2" SAE Washer through end link running inside-to-outside & 1/2" SAE Washer with 1/2" Nylon Lock Nut on outside of mount using a 3/4" socket \ wrench. (See Photo # 35)

Secure, but **Do Not Completely Tighten** control arm hardware at this time. To set bushings properly for ride height, these will be tightened once vehicle is on ground with full vehicle weight on tires \ wheels.

Photo # 35

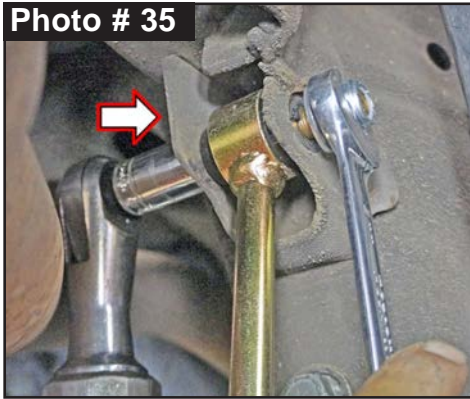
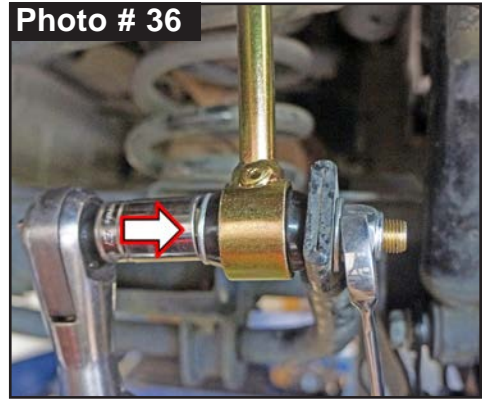


Photo # 36



Install Skyjacker End Link to sway bar with supplied 1/2" x 3" Fine Thread Bolt with 1/2" SAE Washer through end link running inside-to-outside & 1/2" SAE Washer with 1/2" Nylon Lock Nut on outside of mount using a 3/4" socket \ wrench. (See Photo # 36) Secure, but **Do Not Completely Tighten**.

14. Connect OEM rear brake line bracket to the rear differential using a 13mm socket \ wrench. (See Photo # 26)
15. Connect OEM e-brake cable bracket to passenger side frame using a 13mm socket \ wrench. (See Photo # 22)
16. Connect OEM ABS lines to rear differential at link arm mount. Connect ABS line at upper frame mount. (See Photo # 23)
17. Connect OEM rear track bar to the frame using a 21mm socket \ wrench. (See Photo # 28) Secure, but **Do Not Completely Tighten** control arm hardware at this time. To set bushings properly for ride height, these will be tightened once vehicle is on ground with full vehicle weight on tires \ wheels.
Connect OEM e-brake cable bracket to track bar. (See Photo # 27)
18. Install the rear tires \ wheels using a 22mm socket & lower the rear of the vehicle to the ground.

Final Front Steps:

1. Start vehicle. Make sure there are no dash lights pertaining to suspension.
2. Jounce vehicle a couple of times. This will help suspension settle to new ride height. Cycle steering lock-to-lock & check all components for proper operation & clearances. Pay special attention to clearance between tires \ wheels, ADX Shocks & Reservoirs, control arms, brake hoses, ABS wiring, etc.
3. Realign marks on UCA cam positions. Tighten both Skyjacker UCAs using a 21mm socket \ wrench to set bushings properly for ride height. Torque 150 ft.-lbs.

Note: Final torque will be set by alignment technician.

4. Front Tighten & Torque Sequence.

Front strut upper mount to Skyjacker Spacer using a 18mm socket\wrench. Torque 25 ft-lbs.
Skyjacker Spacer to upper mount using a 18mm socket\wrench. Torque 25 ft-lbs.
Front strut lower mount using a 15mm socket\wrench. Torque 50 ft-lbs.
Tie rod end to steering knuckle using a 21mm socket\wrench. Torque 65 ft-lbs.
Sway bar end link to sway bar using a 15mm socket\wrench. Torque 35 ft-lbs.

Rear Installation Pick-Up Models:

5. Rear Tighten & Torque Sequence.

Rear shock absorber upper mount using a 21mm socket\wrench. Torque 65 ft-lbs.
Rear shock absorber lower mount using a 21mm socket\wrench. Torque 65 ft-lbs.
ADX Reservoir clamp. Double check position & clearance. Tighten with 5/32" Hex Key socket.
Torque u-bolts evenly using an 'X' crisscross tightening sequence. Torque 125 ft.-lbs.

Rear Installation SUV Models:

6. Rear Tighten & Torque Sequence.

Rear shock absorber lower bracket mount: 9/16" Bolts 7/8" socket\wrench. Torque 95 ft-lbs.
Rear shock absorber lower mount to bracket using a 21mm socket\wrench. Torque 65 ft-lbs.
Skyjacker End Links upper & lower mounts using a 3/4" socket\wrench. Torque 65 ft-lbs.
Rear track bar to the frame using a 21mm socket\wrench. Torque 125 ft-lbs

Final Notes:

- After installation is complete, double check that all nuts & bolts are tight. Refer to the following chart for proper torque specifications. (**Note:** Do not re-tighten nuts & bolts where thread lock compound was used.)
- With vehicle placed on ground, cycle steering lock to lock & inspect steering, suspension, brake lines, front & rear drivelines, fuel lines & wiring harnesses for proper operation, tightness & adequate clearance.
- Have headlights readjusted to proper settings.
- Have a qualified alignment center align vehicle to OEM specifications.
- After first 100 miles, check all hardware for proper torque & periodically thereafter.

TORQUE SPECIFICATIONS					
INCH SYSTEM			METRIC SYSTEM		
Bolt Size	Grade 5	Grade 8	Bolt Size	Class 8.8	Class 10.9
5/16	180 in-lbs	240 in-lbs	6MM	102 in-lbs	108 in-lbs
3/8	30 ft-lbs	35 ft-lbs	8MM	16 ft-lbs	23 ft-lbs
7/16	45 ft-lbs	60 ft-lbs	10MM	32 ft-lbs	45 ft-lbs
1/2	65 ft-lbs	90 ft-lbs	12MM	55 ft-lbs	75 ft-lbs
9/16	95 ft-lbs	130 ft-lbs	14MM	85 ft-lbs	120 ft-lbs
5/8	135 ft-lbs	175 ft-lbs	16MM	130 ft-lbs	165 ft-lbs
3/4	185 ft-lbs	280 ft-lbs	18MM	170 ft-lbs	240 ft-lbs
The Above Specifications Are Not to Be Used When the Bolt Is Being Installed With a Bushing.					

Seat Belts Save Lives, Please Wear Your Seat Belt.