

Required Tools List:

- SAE Sockets \ Wrenches
(7/16", 1-1/16", 1-1/8" & 1-13/16")
- Metric Sockets \ Wrenches
(24mm, 27mm & 28mm)
- Adjustable Pipe Wrench
- Plastic Fastener Removal Tool
- Safety Glasses
- Jack Stands
- Wheel Chock
- Floor Jack
- Measuring Tape
- Torque Wrench



Before beginning installation, read these instructions & enclosed driver's WARNING NOTICE thoroughly & completely. Also affix WARNING decal in passenger compartment in clear view of all occupants. Please refer to Parts List to insure that all parts & hardware are received prior to disassembly of vehicle. If any parts are found to be missing, contact SKYJACKER® Customer Service at 318-388-0816 to obtain needed items. If you have any questions or reservations about installing this product, contact SKYJACKER® Technical Assistance at 318-388-0816.

Important Notes:

- Skyjacker Radius Arm Brackets Are Required.
- After Installation, a Qualified Alignment Facility Is Required to Align Vehicle to OEM Specifications.

Component Box Breakdown:

Part # F58484LU

Item #	Description	Qty
F5848UL-ASY	LINK, UPPER ASSEMBLY	2
F5848LL-ASY	LINK, LOWER ASSEMBLY	2
HB-F5484LU	HDWR BAG: F58484LU	1

Hardware Bag Breakdown:

Part # HB-F5484LU

Item #	Description	Qty
14X1FTB	1/4 X 1 FINE THREAD BOLT	2
14FTN	1/4 FINE THREAD N/I LOCK NUT	2
14SAEW	1/4 SAE WASHER	4
18MMN	18MM-2.5TPI N/I LOCK NUT	2
34X512CTB	3/4 X 5-1/2 COARSE THRD BOLT	4
34CTN	3/4 COARSE THRD N/I LOCK NUT	4
34SAEW	3/4 SAE WASHER	8
38CC	3/8 CABLE CLAMP	2
LS34114	ROD END SPACER RING	4

Pre-Installation Tips: 'SET' Length of 4-Link Assemblies.

Skyjacker Link with
HDRB114X1R Right Hand 1-1/4"
Rod End & # 114RFTJN Right
Hand 1-1/4" Jam Nut. (Photo # 3)

On rod end, rotate jam nut against
steel tubing. Hold rod end in place
with a pipe wrench & a 1-13/16"
wrench on jam nut to completely
tighten. (Photo # 1 & # 2)

Photo # 1

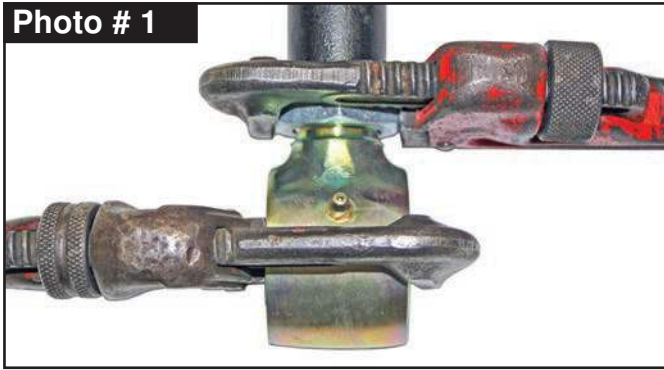


Photo # 2



Measure length of Skyjacker Link Assembly from centerline of rod end to centerline of radius arm
mount hole. (Photo # 3 & # 4) **Note:** Be sure to keep ends square with each other.

4" Lift Upper Links = 31-15/16" * Lower Links = 34-3/4" *

6" Lift Upper Links = 31-15/16" * Lower Links = 35" *

8.5" Lift Upper Links = 32-1/2" * Lower Links = 35-3/8" *

* **Note:** These are pre-alignment
measurements only. Final
Measurements are to be set by a
qualified alignment facility.

Tech Note: Jam Nut Must Be
Tightened Against Steel Tubing
Before Installation.

Photo # 3

Upper Links

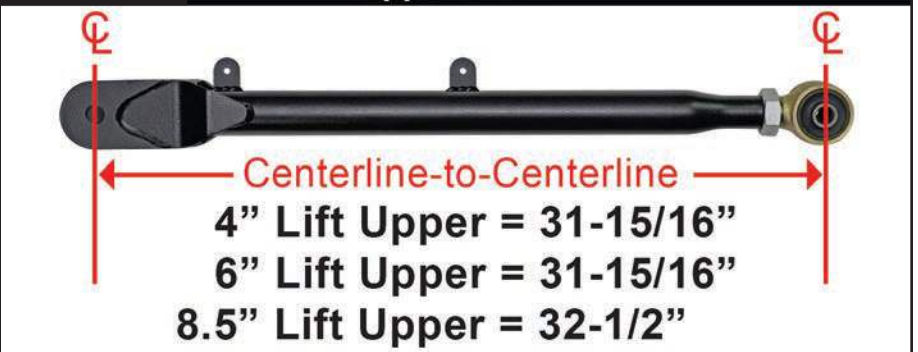
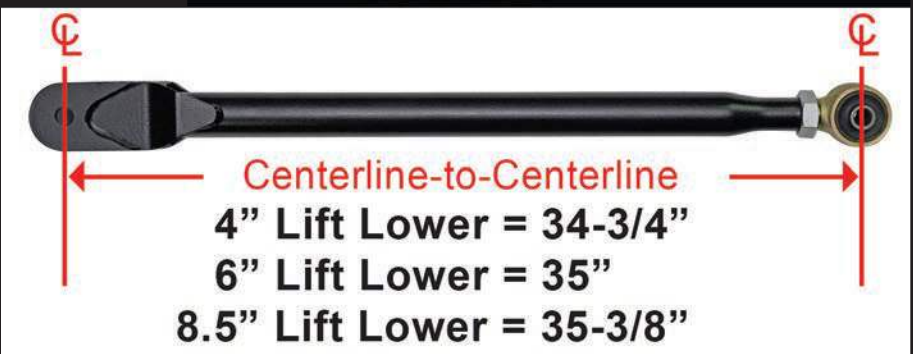


Photo # 4

Lower Links



Note: If Installing 4-Link Conversion as an Upgrade from Skyjacker Radius Arm Drop
Brackets with OEM Radius Arms, Proceed to Step 1.

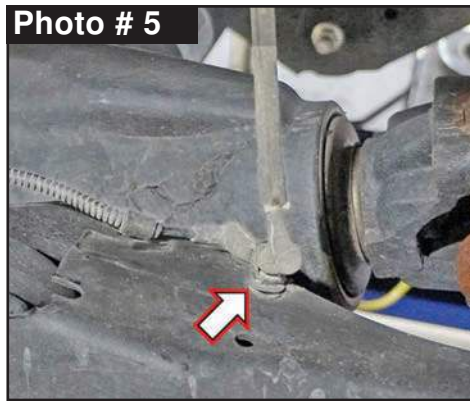
Note: If Installing 4-Link Conversion During Lift Kit Installation, Proceed to Step 8.

Front Installation: **Note:** Save all factory components & hardware for reuse, unless noted.

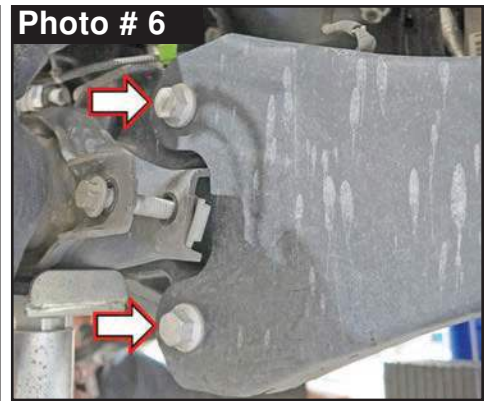
1. With vehicle on flat level ground, set emergency brake & chock rear tires\wheels. Ensure that vehicle transmission is in PARK & engage emergency brake. **Note:** Be sure steering wheel\ wheels are pointing straight forward.
2. Raise front of vehicle, support frame rails using jack stands at indicated lift points in OEM service manual. **Tech Note:** OEM radius arms will need to move freely during this installation.

Note: Perform Steps 3-11 on Driver Side at this Time.

3. Disconnect OEM axle vacuum line from top side of driver side radius arm using a plastic fastener removal tool. (Photo # 5)

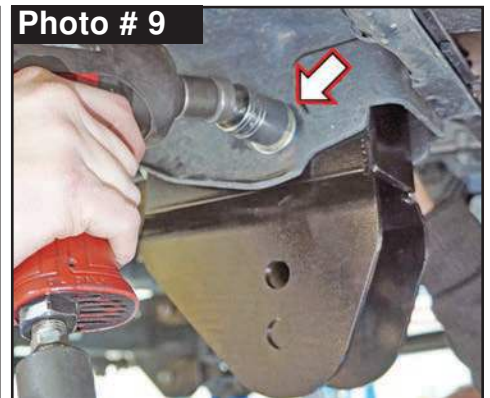
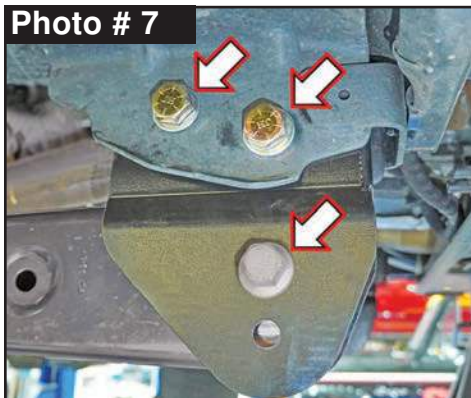


4. Remove OEM radius arm bolts at axle mount using a 24mm socket \ wrench. (Photo # 6)



Tech Note: Upper bolt has nut welded to OEM radius arm.

5. Remove OEM hardware from OEM radius arm at Skyjacker Radius Arm Bracket using a 24mm & 28mm socket \ wrench. (Photo # 7)
6. Remove Skyjacker Radius Arm Bracket \ OEM upper frame mount 3/4" x 2" bolts, SAE Washers & Lock Nuts using a 1-1/16" / 27mm & 1-1/8" socket \ wrench. (Photo # 7 & # 8)
7. To secure Skyjacker Bracket in place, insert supplied 3/4" x 5-1/2" Coarse Thread Bolt with 3/4" SAE Washer through OEM upper frame mount. (Photo # 9)



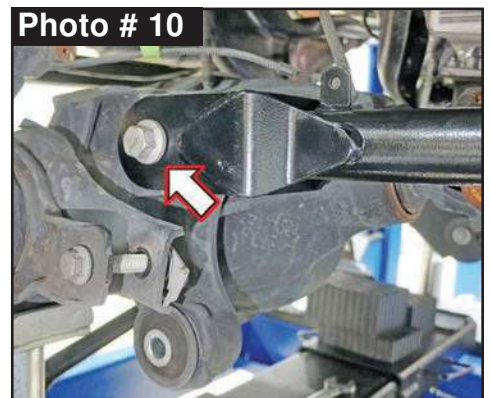
Note: Perform Steps 8-11 on Driver Side at this Time.

8. **Note:** Skyjacker Link Arms Are Not Side Specific, But They Are Position Specific:
F5848UL-ASY Upper Link Mounts (Has Upper Tabs for Axle Vacuum Line).
F5848LL-ASY Lower Link Mounts

Install # F5848UL-ASY Upper Link Arm to OEM upper radius arm axle mount with OEM bolt.

Attach with supplied 18mm Nylon Insert Lock using a 24mm socket \ wrench. (Photo # 10) **Tech Note:** Supplied 18mm Lock Nuts replace upper nut welded to OEM radius arm.

Secure, but **Do Not Completely Tighten** at this time.



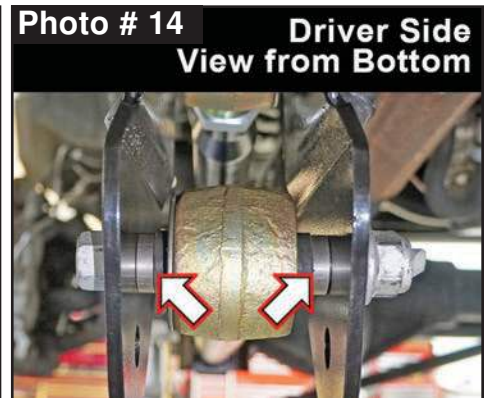
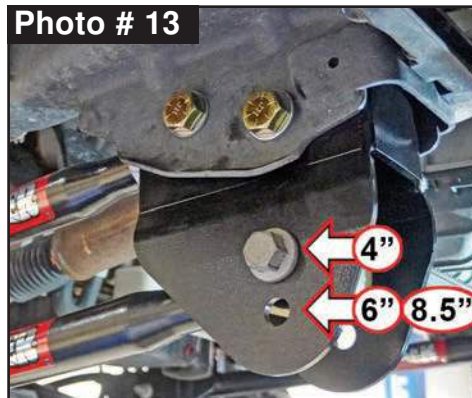
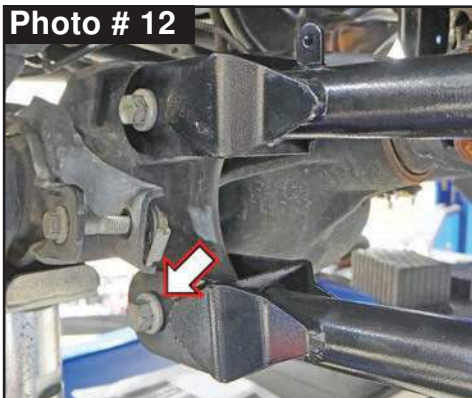
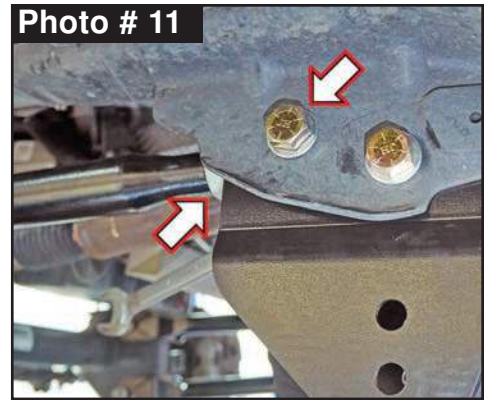
9. Position rod end of Skyjacker Upper Link Arm into Skyjacker Radius Arm Bracket \ OEM frame mount.

Install with supplied 3/4" x 5-1/2" Coarse Thread Bolt with 3/4" SAE Washer from outside-to-inside of vehicle. Attach with supplied 3/4" SAE Washer & 3/4" Nylon Insert Lock Nut using a 1-1/16" / 27mm & 1-1/8" socket \ wrench. (Photo # 11) Secure, but **Do Not Completely Tighten** at this time.

10. Install # F5848LL-ASY Lower Link Arm to OEM lower radius arm axle mount with OEM bolt. Attach with OEM nut using a 24mm socket \ wrench. (Photo # 12) Secure, but **Do Not Completely Tighten** at this time.

11. Position rod end of Skyjacker Link Arm into appropriate lower mounting hole of Skyjacker Radius Arm Bracket. **4" Lift** uses **Upper** Hole. **6"-8.5" Lifts** uses **Lower** Hole. (Photo # 13) Insert OEM bolt into bracket from outside-to-inside of vehicle.

Insert one (1) supplied Rod End Spacer Ring on Each Side of Rod End. (Photo # 14) Attach with OEM nut using a 24mm & 28mm socket \ wrench. Secure, but **Do Not Completely Tighten** at this time.



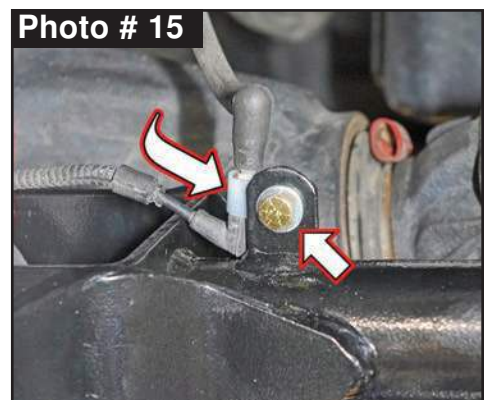
Note: Perform Steps 3-11 or 8-11 on Passenger Side Now. Then Proceed to Step 12.

12. Attach supplied 3/8" Cable Clamp around driver side OEM axle vacuum line. (Photo # 15)

Align Cable Clamp mounting hole with Skyjacker Radius Arm Tab mounting hole.

Install Clamp to Tab with supplied 1/4" x 1" Fine Thread Bolt with 1/4" SAE Washer from outside-to-inside of vehicle.

Attach with supplied 1/4" SAE Washer & 1/4" Nylon Insert Lock Nut using a 7/16" socket \ wrench.



Final Steps:

1. Start vehicle. Make sure there are no dash lights pertaining to suspension.
2. Jounce vehicle a couple of times. This will help suspension settle to ride height. Cycle steering lock-to-lock & check all components for proper operation & clearances. Pay special attention to clearance between tires \ wheels, shocks, hub vacuum lines, brake hoses, ABS wiring, etc.

3. Front Tighten & Torque Sequence.

Skyjacker Link Arm mounts at axle 24mm & 28mm socket \ wrench. Torque 222 ft-lbs.

Skyjacker Upper Link Arm Rod End mounts at frame bracket 1-1/16" / 27mm & 1-1/8" socket \ wrench. Torque 280 ft-lbs.

Skyjacker Lower Link Arm Rod End mounts at frame bracket 24mm & 28mm socket \ wrench. Torque 222 ft-lbs.

Final Notes:

- After installation is complete, double check that all nuts & bolts are tight. Refer to following chart for proper torque specifications. (**Note:** Do not re-tighten nuts & bolts where thread lock compound was used.)
- With vehicle placed on ground, cycle steering lock to lock & inspect steering, suspension, brake lines, front & rear drivelines, fuel lines & wiring harnesses for proper operation, tightness & adequate clearance.
- Have headlights readjusted to proper settings.
- Have a qualified alignment center align vehicle to OEM specifications.
- After first 100 miles, check all hardware for proper torque & periodically thereafter.

TORQUE SPECIFICATIONS					
INCH SYSTEM			METRIC SYSTEM		
Bolt Size	Grade 5	Grade 8	Bolt Size	Class 8.8	Class 10.9
5/16	180 in-lbs	240 in-lbs	6MM	102 in-lbs	108 in-lbs
3/8	30 ft-lbs	35 ft-lbs	8MM	16 ft-lbs	23 ft-lbs
7/16	45 ft-lbs	60 ft-lbs	10MM	32 ft-lbs	45 ft-lbs
1/2	65 ft-lbs	90 ft-lbs	12MM	55 ft-lbs	75 ft-lbs
9/16	95 ft-lbs	130 ft-lbs	14MM	85 ft-lbs	120 ft-lbs
5/8	135 ft-lbs	175 ft-lbs	16MM	130 ft-lbs	165 ft-lbs
3/4	185 ft-lbs	280 ft-lbs	18MM	170 ft-lbs	240 ft-lbs
Above Specifications Are Not to Be Used When Bolt Is Being Installed With a Bushing.					

Seat Belts Save Lives, Please Wear Your Seat Belt.



Check out our favorite ministries at:

- www.innministries.org
- www.familychurch.org • www.kcm.org

Jesus Christ Died For You.

John 3:16

For God so loved the world that He gave His only Son, so that everyone who believes in Him should not perish, but have everlasting life.

Romans 3:23

For all have sinned; all fall short of God's glorious standard.

Ephesians 2:8

God saved you by his special favor when you believed. And you can't take credit for this; it is a gift from God.

Psalms 18:2

The Lord is my Rock, my fortress, and my savior; my God is my Rock, in whom I find protection. He is my shield, the strength of my salvation, and my stronghold.

Romans 10:9-10

That if you shall confess with thy mouth the Lord Jesus, and shall believe in your heart that God hath raised him from the dead, you shall be saved. For with the heart man believeth unto righteousness; and with the mouth confession is made unto salvation.

Pray This Simple Prayer:

God, I come to You admitting I have sinned against You and I need you to take control of my life. The Bible says anyone who calls on the name of the Lord will be saved.

I am calling on You, Jesus. I ask that You come live in my heart and be the Lord over my life today. I do believe You died on the cross for me and came back to life to give me life! Thank You, Lord Jesus for a new life in You! Amen.

Now, go and tell somebody about your new life in Jesus, get a Bible, begin to read it, and go to a Bible believing church.

If you would like someone to pray with you, call Kenneth Copeland Ministries anytime at 800-600-7395.

To listen to commercial free Christian radio on the web, go to www.887fm.org



**JESUS
FORGIVES
ROCKS
DON'T**

Jesús murió por ti.

Juan 3:16

Porque tanto amó Dios al mundo, que dio a su Hijo unigénito, para que todo el que cree en él no se pierda, sino que tenga vida eterna.

Romanos 3:23

Pues todos han pecado y están privados de la gloria de Dios.

Efesios 2:8

Porque por gracia ustedes han sido salvados mediante la fe; esto no procede de ustedes, sino que es el regalo de Dios.

Salmos 18:2

El Señor es mi roca, mi amparo, mi libertador; es mi Dios, el peñasco en que me refugio. Es mi escudo, el poder que me salva, ¡mi más alto escondite!

Romanos 10:9-10

Que si confiesas con tu boca que Jesús es el Señor, y crees en tu corazón que Dios lo levantó de entre los muertos, serás salvo. Porque con el corazón se cree para ser justificado, pero con la boca se confiesa para ser salvo.

Ahora dí esta simple oración:

Dios, vengo a Ti y admito que he pecado contra Ti, necesito que tomes el control de mi vida. La Biblia dice que todo aquel que invoca el nombre del Señor escapará con vida. En este momento yo clamo ante Ti, Jesús; te pido que vengas a vivir en mi corazón y que tomes el control de mi vida. ¡Yo creo que tu moriste en la cruz y resucitaste para darme vida! ¡Gracias Señor Jesús, por una nueva vida que tengo en Ti! Amén.

Ahora ve y dile a alguien sobre la nueva vida que tienes en Cristo. Compra una Biblia y empieza a leerla. Busca una Iglesia que cree en la Biblia y hazte parte de esa Iglesia.

Si te gustaría orar con alguien, puedes llamar a este número 800-600-7395

Puedes ir a este sitio de Internet para escuchar música Cristiana sin anuncios, www.887fm.org

