



www.skyjacker.com

Jeep Gladiator JT 2.5" Metal Spacer Suspension Lift Installation Instructions

Required Tools List:

- **SAE Hex Key & SAE Sockets \Wrenches**
(7/32" Hex Key Socket & 7/16", 1/2", 9/16" & 3/4")
- **Metric Hex Key & Metric Sockets \Wrenches**
(6mm Hex Key Socket, 10mm, 13mm, 15mm, 18mm, 19mm, 21mm & 22mm)
- **Measuring Tape** • **Paint Marker**
- **Safety Glasses** • **Wheel Chock**
- **Floor Jack** • **Jack Stands**
- **Pliers** • **Torque Wrench**



Before beginning installation, read these instructions & enclosed driver's WARNING NOTICE thoroughly & completely. Also affix WARNING decal in passenger compartment in clear view of all occupants. Please refer to Parts List to insure that all parts & hardware are received prior to disassembly of vehicle. If any parts are found to be missing, contact SKYJACKER® Customer Service at 318-388-0816 to obtain needed items. If you have any questions or reservations about installing this product, contact SKYJACKER® Technical Assistance at 318-388-0816.

Make sure you park vehicle on a level concrete or asphalt surface. Many times a vehicle is not level (side-to-side) from factory, but is usually not noticed until a lift kit has been installed which makes difference more visible. Using a measuring tape, measure front & rear (both sides) from ground up to center of fender opening above axle. Record this information below for future reference.

Driver Side Front: _____ / _____ BEFORE / AFTER	Passenger Side Front: _____ / _____ BEFORE / AFTER
Driver Side Rear: _____ / _____ BEFORE / AFTER	Passenger Side Rear: _____ / _____ BEFORE / AFTER

Important Notes:

- The Drag Link Must Be Adjusted to Center the Steering Wheel Before the Vehicle Is Driven. Failure to Do So Will Cause Computer Errors, Odd Handling Characteristics, & Poor Performance.
- If Larger Tires (10% More Than the OEM Diameter) Are Installed, Speedometer Recalibration Will Be Necessary. Contact Your Local JEEP Dealer or an Authorized Skyjacker® Dealer for Details.
- After Installation, a Qualified Alignment Facility Is Required to Align the Vehicle to the OEM Specifications.

Component Box Breakdown:**Part # G25MSFB**

Item #	Description	Qty
JL25FMS-S	COIL SPRING SPACER, FRONT	2
JL25SEF-S	SHOCK EXT. BRACKET, FRONT	2
SBE4028-L	SWAY BAR END LINK, FRONT	2
HB-G250MSB	HDWR BOX: BUMP STOP SPACER	1
HB-SBENB03	HDWR BAG: SB END LINK, FRT	1
I-G25MS	INST SHEET: G25MSFB\G250MSB	1

Part # G250MSB

Item #	Description	Qty
JL25FMS-S	COIL SPRING SPACER, FRONT	2
JTG10RMS-S	COIL SPRING SPACER, REAR	2
JL25SEF-S	SHOCK EXT. BRACKET, FRONT	2
SBE4028-L	SWAY BAR END LINK, FRONT	2
HB-G250MSB	HDWR BOX: BUMP STOP SPACER	1
HB-SBENB03	HDWR BAG: SB END LINK, FRT	1
I-G25MS	INST SHEET: G25MSFB\G250MSB	1

Part # G250MMSB

Item #	Description	Qty
JL25FMS-S	COIL SPRING SPACER, FRONT	2
JTG10RMS-S	COIL SPRING SPACER, REAR	2
JL25FSE-S	SHOCK EXT. BRACKET, FRONT	2
SBE4028-L	SWAY BAR END LINK, FRONT	2
HB-G250MMSB	HDWR BOX: BUMP STOP SPACER	1
HB-SBENB03	HDWR BAG: SB END LINK, FRT	1
I-G25MS	INST SHEET: G25MSFB\G250MSB	1

Hardware Bag Breakdown:**Part # HB-G250MSB**

Item #	Description	Qty
BSS3020-S	BUMP STOP SPACER	2
411481	CRUSH SLEEVE / 1.62 LONG	2
516X1CTB	5/16 X 1 COARSE THREAD BOLT	2
516LW	5/16 LOCK WASHER	2
516CTSN	5/16 COARSE THREAD STD NUT	2
38X1FTB	3/8 X 1 FINE THREAD BOLT	2
38X234BHB	3/8 X 2-3/4 BUTTON HEAD BOLT	2
38SAEW	3/8 SAE WASHER	6
38CTN	3/8 COARSE THRD N/I LOCK NUT	2
38FTN	3/8 FINE THREAD N/I LOCK NUT	2
12X312FTB	1/2 X 3-1/2 FINE THREAD BOLT	2
12SAEW	1/2 SAE WASHER	4
12FTN	1/2 FINE THREAD N/I LOCK NUT	2

Part # HB-G250MMSB

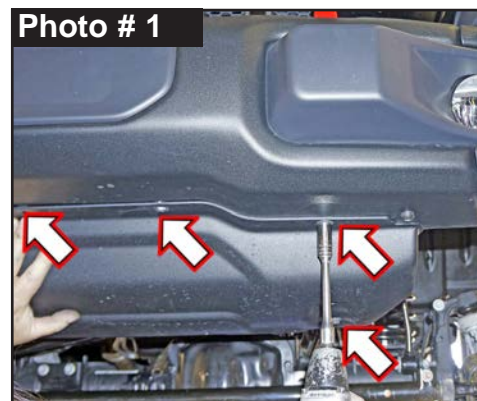
Item #	Description	Qty
BSS3020-S	BUMP STOP SPACER	2
CS1556	CRUSH SLEEVE / 1.55 LONG	2
516X1CTB	5/16 X 1 COARSE THREAD BOLT	2
516LW	5/16 LOCK WASHER	2
516CTSN	5/16 COARSE THREAD STD NUT	2
38X1FTB	3/8 X 1 FINE THREAD BOLT	2
38X234BHB	3/8 X 2-3/4 BUTTON HEAD BOLT	2
38SAEW	3/8 SAE WASHER	6
38CTN	3/8 COARSE THRD N/I LOCK NUT	2
38FTN	3/8 FINE THREAD N/I LOCK NUT	2
14X90MMB	14MM X 90MM METRIC BOLT	2
916SAEW	9/16 SAE WASHER	4
14MMN	14MM METRIC N/I LOCK NUT	2

Part # HB-SBENB03

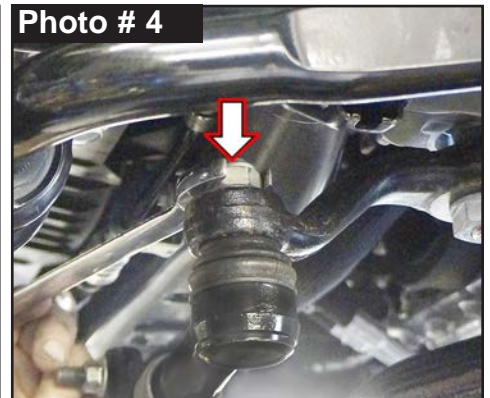
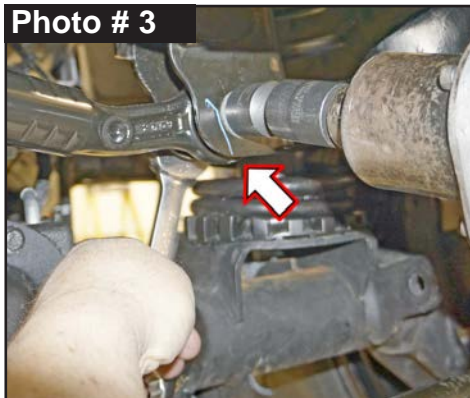
Item #	Description	Qty
141509	ES25 SLEEVE, 1.50 LONG	4
12X70MMB	12 X 70 METRIC BOLT \ 10.9	2
716USSW	7/16 USS FLAT WASHER	4
12MMN	12MM NYLON INSERT LOCK NUT	2

Front Installation: Note: Save all factory components & hardware for reuse, unless noted.

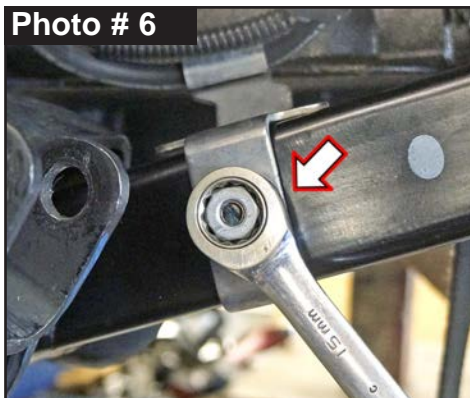
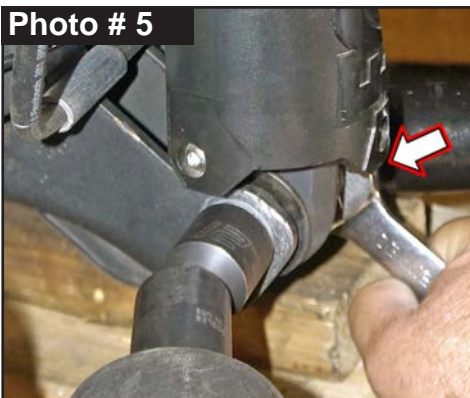
1. With vehicle on flat level ground, set emergency brake & chock rear tires\wheels.
2. Raise front of vehicle, support frame rails using jack stands at indicated lift points in OEM service manual.
3. Remove the front tires\wheels using a 22mm socket.
4. Remove OEM front skid plate using a 13mm socket\wrench. (See Photo # 1)



5. Remove OEM front sway bar end links using a 6mm hex key socket \wrench & 18mm socket \wrench. (See Photo # 2)
6. Disconnect OEM front track bar from frame using a 21mm socket \wrench. (See Photo # 3)
7. Disconnect OEM drag link from OEM pitman arm using a 21mm socket \wrench. (See Photo # 4)

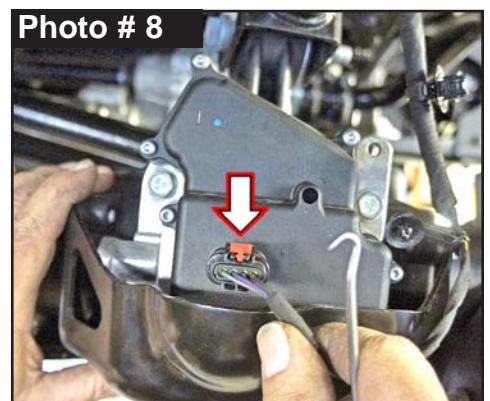


8. Disconnect OEM front shock from lower axle mount only using a 18mm socket \wrench. (See Photo # 5)
9. Disconnect OEM front brake line brackets from OEM front lower control arms using a 15mm socket \wrench. (See Photo # 6)
10. Mark the location of OEM front driveshaft \flange at axle & disconnect using a 15mm socket \wrench. (See Photo # 7)



11. Disconnect wiring harness from passenger side OEM front upper control arm using pliers.
12. Disconnect wiring harness from OEM 4WD actuator. (See Photo # 8)
13. Disconnect OEM vent hose from front differential using pliers.
14. While checking for appropriate slack in ABS lines, brake lines, differential vent hose & etc.

Tech Note: Watch the Center Axle Disconnect (CAD) connection & on **RUBICON** Models: The front locker connections.



Lower front differential. Remove OEM front coil springs & OEM front coil spring isolators.

Tech Note: Do Not Remove OEM Bump Stop from OEM upper mount.

15. To help hold Skyjacker # JL25FMS-S Front Coil Spring Spacer in place during installation, the supplied 5/16" x 1" Coarse Thread Bolt installs up from bottom through spacer & OEM upper mount. (See Photo # 9)
Attach with supplied 5/16" Lock Washer & 5/16" Coarse Thread Stud Nut on top using a 1/2" socket \ wrench. (See Photo # 10)

Install OEM front coil spring isolator onto bottom of Skyjacker Spacer.

Note: Be sure OEM front coil spring isolator tab aligns into tab hole of Skyjacker Spacer. (See Photo # 10)

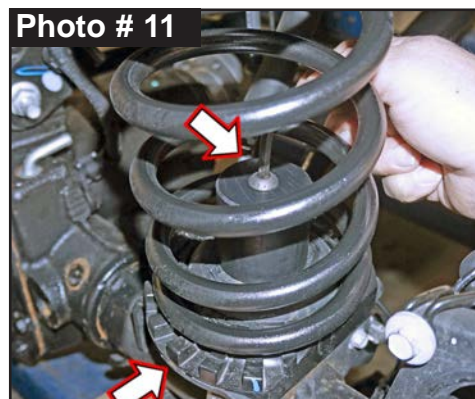


16. Place Skyjacker # BSS3020-S Front Bump Stop Spacer inside OEM front coil spring. Install OEM coil spring with bump stop inside. Insert coil spring into upper tower first. Be sure that the coil is indexed to seat properly, then raise the axle enough to hold the coil spring in place.

Tech Note: If the front axle cannot be lowered enough to allow the coil spring to be installed, carefully rotate the pinion up to provide more clearance for the coil installation.

Insert the supplied 3/8" x 2-3/4" Button Head Bolt into bump stop. Align bolt into hole of OEM lower coil spring mount pad. Reach under the spring mount pad & above the axle tube to install supplied 3/8" SAE Washer & 3/8" Nylon Insert Lock Nut onto bolt. Tighten bump stop into place using a 7/32" hex key socket \ wrench & 9/16" socket \ wrench. (See Photo # 11) Torque 25 ft.-lbs.

Tech Note: On Passenger Side, it may be necessary to remove the ABS bracket to install the bump stop lock nut. At rear of the axle above the shock mount, remove ABS mounting bracket using a 10mm socket \ wrench. Once bump stop spacer is tight, reinstall ABS line mounting bracket onto axle.



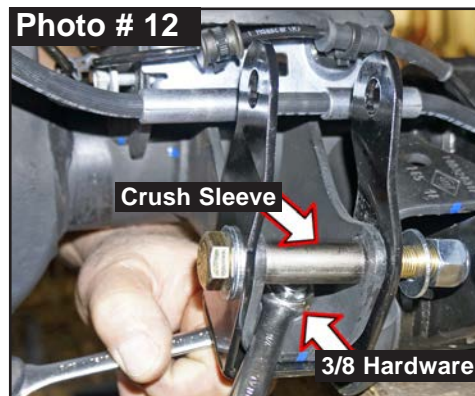
NOTE: G25MSFB & G25MSB Kits: Proceed to Step 17.

G250MMSB Kit for MOJAVE Edition: Proceed to Step 18.

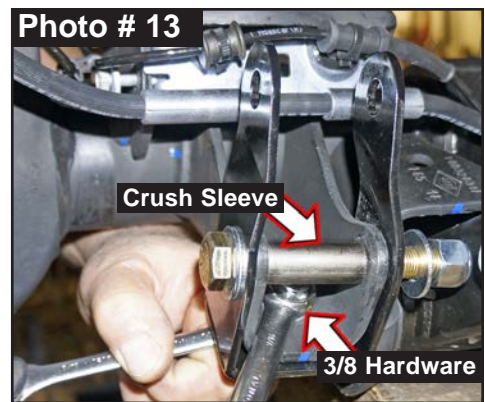
17. Connect Skyjacker # JL25SEF-S Front Lower Shock Extension Bracket to OEM front lower shock mount with the upper mounting holes offset towards the front of the vehicle.

Install with supplied 3/8" x 1" Fine Thread Bolt with 3/8" SAE Washers bottom & 3/8" SAE Washer with 3/8" Nylon Insert Lock Nut top using a 9/16" socket \ wrench. (See Photo # 12)

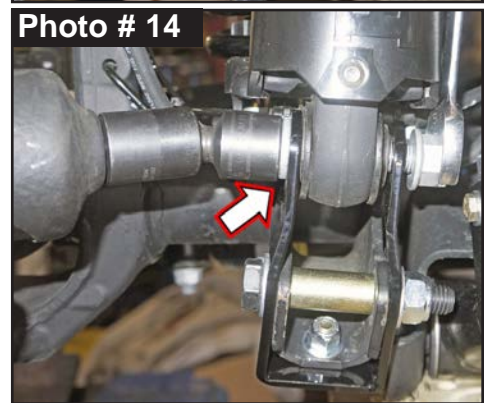
Install 1/2" x 3-1/2" Fine Thread Bolt with 1/2" SAE Washer outside, 1.62 Long Crush Sleeve in between with 1/2" SAE Washer with 1/2" Nylon Insert Lock Nut on inside using a 3/4" socket \ wrench. (See Photo # 12) Proceed to Step 19.



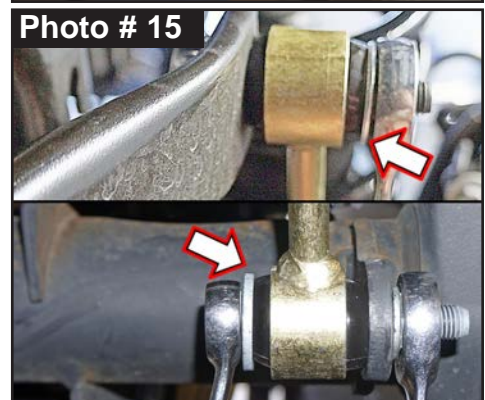
18. Connect Skyjacker # JTG25FSE-S Front Lower Shock Extension Bracket to OEM front lower shock mount with the upper mounting holes offset towards the front of the vehicle. Install with supplied 3/8" x 1" Fine Thread Bolt with 3/8" SAE Washers bottom & 3/8" SAE Washer with 3/8" Nylon Insert Lock Nut top using a 9/16" socket \ wrench. (See Photo # 12) Install 14mm x 90mm Metric Bolt with 9/16" SAE Washer outside, 1.55 Long Crush Sleeve in between with 9/16" SAE Washer with 14mm Nylon Insert Lock Nut on inside using a 22mm socket \ wrench. (See Photo # 13) Proceed to Step 19.



19. Connect the OEM front shocks to the new Skyjacker front lower shock extension brackets using the OEM hardware & a 21mm socket \ wrench. (See Photo # 14)



20. Coat with a water resistant grease & press # ES25 1.50 Long Steel Sleeves into upper & lower mounts of Skyjacker # SBE4028-L Front Sway Bar End Link. Install upper end link mount with supplied 12mm x 70mm Bolt with a 7/16" USS Washer through sway bar with a 7/16" USS Washer & 12mm Nylon Insert Lock Nut using a 19mm socket \ wrench. (See Photo # 15)



Attach lower end link with OEM hardware using a 18mm socket \ wrench.

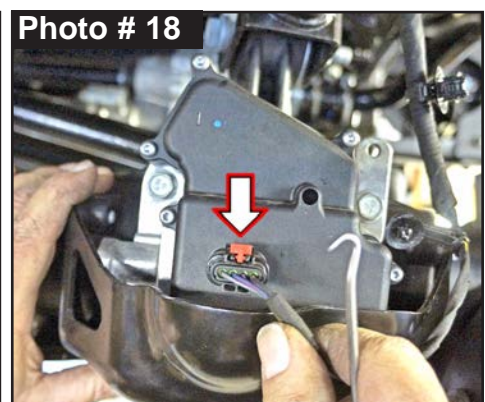
Note: On Driver Side, install OEM lower bolt with large washer to outer bushing side of sway bar end link. Secure, but Do Not Completely Tighten at this time.

21. Connect OEM front driveshaft with OEM hardware using a 15mm socket \ wrench. (See Photo # 16)

22. Connect OEM drag link to OEM pitman arm with OEM hardware using a 21mm socket \ wrench. (See Photo # 17) Torque 75 ft-lbs.

23. Connect OEM vent hose to front differential using pliers.

24. Connect wiring harness to OEM 4WD actuator. (See Photo # 18)



25. Connect the wiring harness to the passenger side OEM front upper control arm.

26. Connect OEM front brake line brackets to OEM front lower control arm with OEM hardware using a 15mm socket \wrench. (See Photo # 19)
27. Install OEM front skid plate with OEM hardware using a 13mm socket \wrench. (See Photo # 20)
27. Install front tires \wheels using a 22mm socket. Lower vehicle to ground. Torque 130 ft-lbs.
29. Connect the OEM front track bar to the frame using the OEM hardware & a 21mm socket \wrench. (See Photo # 21) **Note:** Slightly turning the steering wheel will help align the OEM front track bar with the frame mount.

Photo # 19

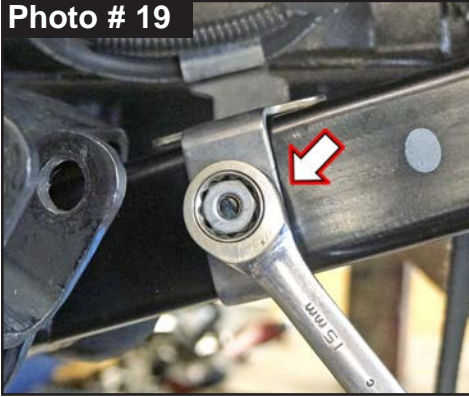


Photo # 20

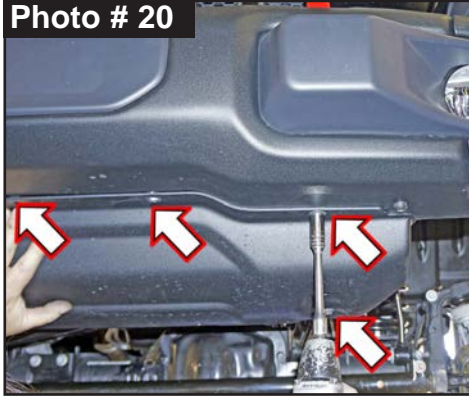
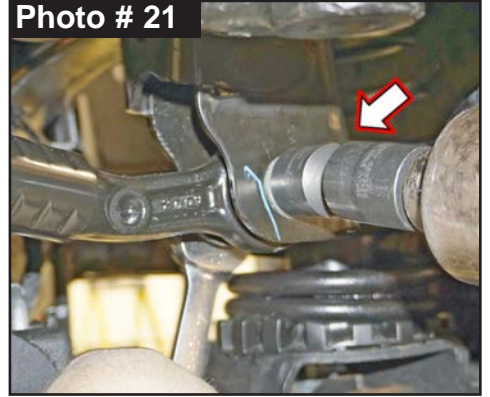


Photo # 21



G250MSB & G250MMSB Kit for MOJAVE Edition KITS:

Rear Installation: **Note:** Save all factory components & hardware for reuse, unless noted.

1. Chock front tires \wheels. Raise rear of vehicle & support frame rails using jack stands at indicated lift points in OEM service manual.
2. Remove rear tires \wheels using a 22mm socket.
3. Remove OEM rear sway bar end link. Disconnect lower link at sway bar using a 6mm hex key socket \wrench & 18mm socket \wrench. (See Photo # 22)
Disconnect upper link at outside frame using a 21mm socket \wrench.
4. Disconnect OEM rear track bar from the rear differential using a 21mm socket \wrench. (See Photo # 23)
5. Disconnect OEM rear shock from lower axle mount only using a 21mm socket \wrench. (See Photo # 24)

Photo # 22

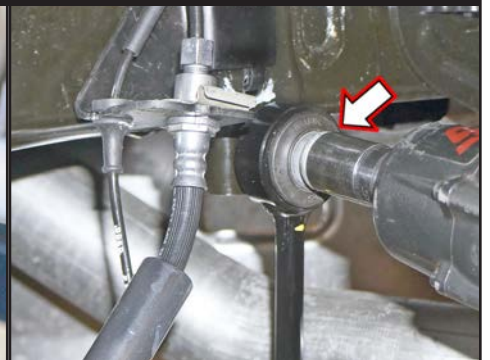


Photo # 23

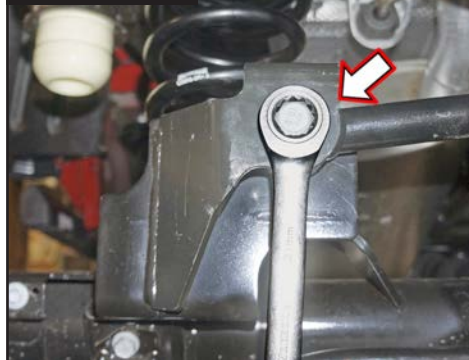


Photo # 24



6. While checking for appropriate slack in ABS lines, brake lines, differential vent hose & etc.

Note: RUBICON Models: Watch rear locker connections.

Lower rear axle & remove OEM rear coil springs.

Tech Note: OEM upper coil spring isolators are Side Specific to properly align with coil \ frame mounts. Place upper coil spring isolator in upper coil bucket. Mark orientation on isolator & upper coil bucket. Mark top of isolators: DR & PA also.

(See Photo # 25 & # 26)

Photo # 25



Photo # 26



7. To help hold Skyjacker # JTG20RMS-S Rear Coil Spring Spacer in place during installation, the supplied \ attached 1/4" x 3/4" Course Thread Bolt installs from topside of OEM rear coil spring mount down into spacer. **Tech Note:** Install bolt from outside frame rail using a 7/16" wrench. (See Photo # 27)
8. Install OEM rear coil spring isolator. (See Photo # 28) **Note:** Be sure that tab of each OEM upper coil spring isolator is aligned with previous marks & tab hole of OEM upper coil spring mount. (See Photo # 25 & # 26) Install OEM rear coil springs. (See Photo # 29)

Photo # 27

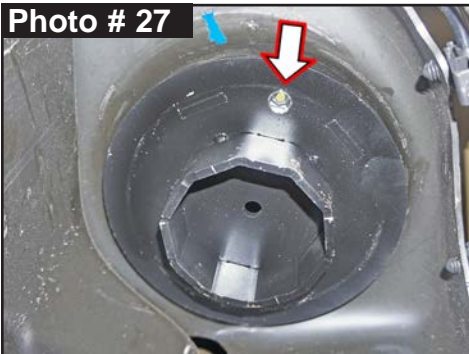


Photo # 28



Photo # 29

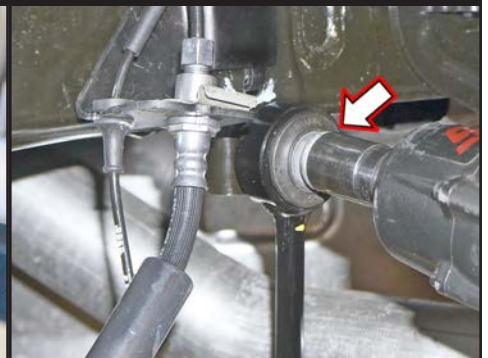


9. Connect OEM rear shock to lower axle mount with OEM hardware using a 21mm socket \ wrench. (See Photo # 30)
10. Connect OEM rear sway bar lower end link to OEM sway bar with OEM hardware using a 6mm hex key socket \ wrench & 18mm socket \ wrench. (See Photo # 31)
- Connect upper link at outside frame with OEM hardware using a 21mm socket \ wrench.

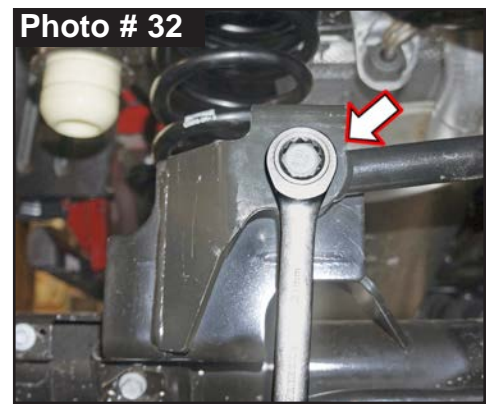
Photo # 30



Photo # 31



11. Install rear tires\wheels using a 22mm socket. Lower vehicle to ground. Torque 130 ft-lbs.
12. Connect OEM rear track bar to OEM bracket\axle mount with OEM bolt & tab nut using a 21mm socket\wrench. (See Photo # 32) Secure, but Do Not Completely Tighten at this time. **Note:** Install OEM bolt from rear-to-front of vehicle. **Tech Note:** It may be necessary to raise\lower axle to align track bar bolt.



Final Clearance Check & Torque Steps:

Note: Check Front Center Axle Disconnect (CAD) connection & on **RUBICON** Models: Check Front & Rear locker connections.

1. Start vehicle. Make sure there are no dash lights pertaining to suspension.
2. Jounce vehicle a couple of times. This will help suspension settle to new ride height. Cycle steering lock-to-lock & check all components for proper operation & clearances. Pay special attention to clearance between tires\wheels & ADX Shocks & Reservoirs, control arms, brake hoses, ABS wiring, etc.
3. Front Tighten & Torque Sequence.
Skyjacker track bar at frame using a 21mm wrench. Torque 52 ft-lbs. + 115°
Front shock extension bracket at lower bolt mount using a 9/16" socket\wrench. Torque 35 ft-lbs.
Front shock extension bracket at crush sleeve using a 3/4" socket\wrench. Torque 65 ft-lbs.
Front shock extension bracket at lower shock mount using a 18mm wrench. Torque 74 ft-lbs.
Skyjacker sway bar end link upper bolt using a 19mm socket\wrench. Torque 59 ft-lbs.
Skyjacker sway bar end link lower bolt using a 18mm socket\wrench. Torque 59 ft-lbs.
4. Rear Tighten & Torque Sequence.
Rear OEM track bar to OEM bracket\axle mount. Torque 130 ft-lbs.
Rear shock absorber lower mount using a 18mm socket\wrench. Torque 74 ft-lbs.
Skyjacker sway bar end link mount using a 5/16" hex key socket & a 18mm socket\wrench. Torque 59 ft-lbs.
Skyjacker sway bar end link mount using a 18mm socket\wrench. Torque 59 ft-lbs.

Final Notes:

- After installation is complete, double check that all nuts & bolts are tight. Refer to the following chart for proper torque specifications. (**Note:** Do not re-tighten nuts & bolts where thread lock compound was used.)
- With vehicle placed on ground, cycle steering lock to lock & inspect steering, suspension, brake lines, front & rear drivelines, fuel lines & wiring harnesses for proper operation, tightness & adequate clearance.
- Have headlights readjusted to proper settings.
- Have a qualified alignment center align vehicle to OEM specifications.
- After first 100 miles, check all hardware for proper torque & periodically thereafter.

TORQUE SPECIFICATIONS					
INCH SYSTEM			METRIC SYSTEM		
Bolt Size	Grade 5	Grade 8	Bolt Size	Class 8.8	Class 10.9
5/16	180 in-lbs	240 in-lbs	6MM	60 in-lbs	108 in-lbs
3/8	30 ft-lbs	35 ft-lbs	8MM	216 in-lbs	23 ft-lbs
7/16	45 ft-lbs	60 ft-lbs	10MM	32 ft-lbs	45 ft-lbs
1/2	65 ft-lbs	90 ft-lbs	12MM	55 ft-lbs	75 ft-lbs
9/16	95 ft-lbs	130 ft-lbs	14MM	85 ft-lbs	120 ft-lbs
5/8	135 ft-lbs	175 ft-lbs	16MM	130 ft-lbs	165 ft-lbs
3/4	185 ft-lbs	280 ft-lbs	18MM	170 ft-lbs	240 ft-lbs
The Above Specifications Are Not to Be Used When the Bolt Is Being Installed With a Bushing.					

Seat Belts Save Lives, Please Wear Your Seat Belt.

Optional Accessories:

SBE4258 Front Double Disconnect Sway Bar End Links Pair | 3.5"- 6.5" Lift
JTGRTBA20 Adjustable Track Bar | Rear

Optional HD OEM Replacement Steering Stabilizers Available:

7008 HD OEM Replacement Steering Stabilizer | White Steering Damper
8008 HD OEM Replacement Steering Stabilizer | Black Steering Damper
9008 HD OEM Replacement Steering Stabilizer | Silver Steering Damper

Optional Dual Steering Stabilizer Kits Available:

7208 Dual Steering Stabilizer Kit | White Steering Dampers
8208 Dual Steering Stabilizer Kit | Black Steering Dampers
9208 Dual Steering Stabilizer Kit | Silver Steering Dampers

Optional HD Front / Rear Upper & Lower Control Arms Available:

JLL24F-SX Single Flex Front Lower Control Arms Pair | 1"- 6" Lift
GLL24R-SX Single Flex Rear Lower Control Arms Pair | 1"- 6" Lift
JLULF26-SX Single Flex Front Upper Control Arms Pair | 1"- 6" Lift
GULR24-SX Single Flex Rear Upper Control Arms Pair | 1"- 6" Lift



**JESUS
FORGIVES
ROCKS
DON'T**

Jesus Christ Died For You.

John 3:16

For God so loved the world that He gave His only Son, so that everyone who believes in Him should not perish, but have everlasting life.
Romans 3:23

For all have sinned; all fall short of God's glorious standard.
Ephesians 2:8

God saved you by his special favor when you believed. And you can't take credit for this; it is a gift from God.
Psalms 18:2

The Lord is my Rock, my fortress, and my savior; my God is my Rock, in whom I find protection. He is my shield, the strength of my salvation, and my stronghold.
Romans 10:9-10

That if you shall confess with thy mouth the Lord Jesus, and shall believe in your heart that God hath raised him from the dead, you shall be saved. For with the heart man believeth unto righteousness; and with the mouth confession is made unto salvation.

Pray This Simple Prayer:

God, I come to You admitting I have sinned against You and I need you to take control of my life. The Bible says anyone who calls on the name of the Lord will be saved. I am calling on You, Jesus. I ask that You come live in my heart and be the Lord over my life today. I do believe You died on the cross for me and came back to life to give me life! Thank You, Lord Jesus for a new life in You!

Now, go and tell somebody about your new life in Jesus, get a Bible, begin to read it, and go to a Bible believing church.

If you would like someone to pray with you, call Kenneth Copeland Ministries anytime at 800-600-7395.

To listen to commercial free Christian radio on the web, go to www.887fm.org

Jesús murió por ti.

Juan 3:16

"Porque tanto amó Dios al mundo, que dio a su Hijo unigénito, para que todo el que cree en él no se pierda, sino que tenga vida eterna."
Romanos 3:23

"Pues todos han pecado y están privados de la gloria de Dios."
Efesios 2:8

"Porque por gracia ustedes han sido salvados mediante la fe; esto no procede de ustedes, sino que es el regalo de Dios."
Salmos 18:2

"El Señor es mi roca, mi amparo, mi libertador; es mi Dios, el peñasco en que me refugio. Es mi escudo, el poder que me salva, ¡mi más alto escondite!"
Romanos 10:9-10

"9 Que si confi esas con tu boca que Jesús es el Señor, y crees en tu corazón que Dios lo levantó de entre los muertos, serás salvo. 10 Porque con el corazón se cree para ser justifi cado, pero con la boca se confi esa para ser salvo."

Ahora dí esta simple oración:

Dios, vengo a Ti y admito que he pecado contra Ti, necesito que tomes el control de mi vida. La Biblia dice que todo aquel que invoca el nombre del Señor escapará con vida. En este momento yo clamo ante Ti, Jesús; te pido que vengas a vivir en mi corazón y que tomes el control de mi vida. ¡Yo creo que tu moriste en la cruz y resucitaste para darme vida! ¡Gracias Señor Jesús, por una nueva vida que tengo en Ti! Amen.

Ahora ve y dile a alguien sobre la nueva vida que tienes en Cristo. Compra una Biblia y empieza a leerla. Busca una Iglesia que cree en la Biblia y hazte parte de esa Iglesia.

Si te gustaría orar con alguien, puedes llamar a este número 800-600-7395

Puedes ir a este sitio de Internet para escuchar música Cristiana sin anuncios, www.887fm.org

Check out our favorite ministries at:



www.innministries.org
www.familychurch.org
www.kcm.org