



1984 - 2001 Jeep Cherokee XJ 3" Suspension Lift Installation Instructions

www.skyjacker.com

REQUIRED TOOL LIST:

- Safety Glasses
- Metric / Standard Wrenches & Sockets
- Drill / Assorted Drill Bits
- C-Clamps
- Hacksaw
- Floor Jack
- Jack Stands
- Measuring Tape
- Torque Wrench



Before beginning the installation, thoroughly & completely read these instructions & the enclosed driver's WARNING NOTICE. Affix the WARNING decal in the passenger compartment in clear view of all occupants. Please refer to the Parts List to insure that all parts & hardware are received prior to the disassembly of the vehicle. If any parts are found to be missing, contact SKYJACKER® Customer Service at 318-388-0816 to obtain the needed items. If you have any questions or reservations about installing this product, contact SKYJACKER® Technical Assistance at 318-388-0816.

Make sure you park the vehicle on a level concrete or asphalt surface. Many times a vehicle is not level (side-to-side) from the factory & is usually not noticed until a lift kit has been installed, which makes the difference more visible. Using a measuring tape, measure the front & rear (both sides) from the ground up to the center of the fender opening above the axle. Record this information below for future reference.

Driver Side Front: _____

Passenger Side Front: _____

Driver Side Rear: _____

Passenger Side Rear: _____

Important Notes:

- If larger tires (10% more than the OEM diameter) are installed, speedometer recalibration will be necessary. Contact your local Jeep dealer or an authorized dealer for details.
- After installation, a qualified alignment facility is required to align the vehicle to the OEM specifications.

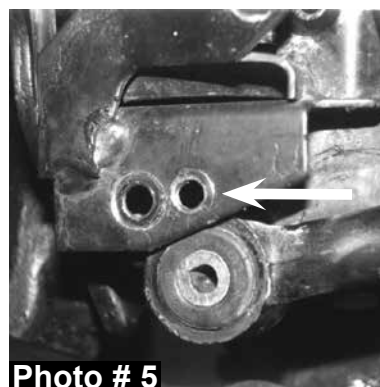
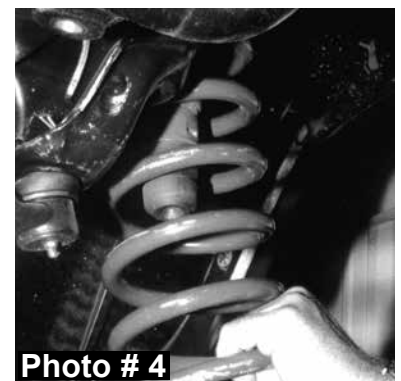
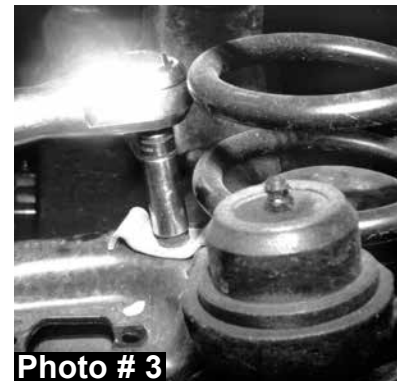
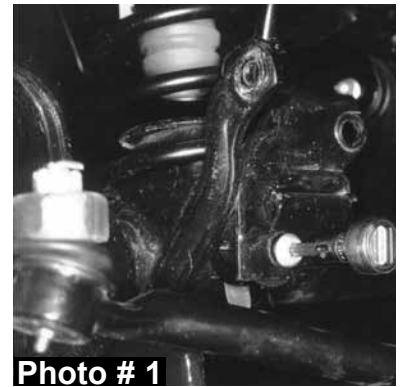
Component Box Breakdown:

**Part #: JC301BB / JC301BBLT / JC301BH / JC301BHLT / JC315BSB / JC315BSH
/ JC318BSB / JC318BSH**

Item #	Description	Qty	Item #	Description	Qty
JC30FS	FRONT COIL SPRING (Included With JC301BB, JC301BH, JC315BSB, JC315BSH, JC318BSB, & JC318BSH)	2	12FTN	1/2 FINE THREAD LOCK NUT (Included With JC315BSB, JC315BSH, JC318BSB, & JC318BSH)	8
TJ40FS-DR	FRONT COIL SPRING DR / LT (Included With JC301BBLT & JC301BHLT)	2	12UBW	1/2 U-BOLT WASHER (Included With JC315BSB, JC315BSH, JC318BSB, & JC318BSH)	8
R3136S	REAR ADD A LEAF (Included With JC301BB, JC301BBLT, JC301BH, & JC301BHLT)	2	516X34TCFB	5/16 x 3/4 THREAD CUT FLANGE BOLT (Included With JC301BBLT & JC301BHLT)	2
5163S	5/16 X 3 TIE BOLT (Included With JC301BB, JC301BBLT, JC301BH, & JC301BHLT)	2	B8516	BLACK MAX SHOCK W/BLK BOOT (Included With JC301BB, JC315BSB, & JC318BSB)	2
516TBN	5/16 TIE BOLT NUT (Included With JC301BB, JC301BBLT, JC301BH, & JC301BHLT)	2	B8518	BLACK MAX SHOCK W/BLK BOOT (Included With JC301BB, JC301BBLT, JC315BSB, & JC318BSB)	2
12X234X6U	1/2 X 2 3/4 X 6 U-BOLT (Included With JC315BSB & JC315BSH)	4	B8525	BLACK MAX SHOCK W/BLK BOOT (Included With JC301BBLT)	2
12X318X612U	1/2 X 3 1/8 X 6 1/2 U-BOLT (Included With JC318BSB & JC318BSH)	4	H7016	HYDRO SHOCK W/RED BOOT (Included With JC301BH, JC315BSH, & JC318BSH)	2
			H7018	HYDRO SHOCK W/RED BOOT (Included With JC301BH, JC301BHLT, JC315BSH, & JC318BSH)	2
			H7025	HYDRO SHOCK W/RED BOOT (Included With JC301BHLT)	2
			I-JC301B	INSTRUCTION SHEET	1

Front Installation:

1. With the vehicle on a level concrete or asphalt surface, set the emergency brake & block the rear tires / wheels.
2. Lift the front of the vehicle & support the vehicle using jack stands.
3. Remove the front tires / wheels.
4. Remove the OEM front shocks.
5. Disconnect the OEM track bar from the passenger side lower front axle mount. **Note:** It may be necessary to pry the OEM track bar loose from the passenger side lower front axle mount. (See Photo # 1)
6. Disconnect the OEM drag link from the OEM pitman arm.
7. Disconnect the OEM sway bar end links from the front axle mounts. (See Photo # 2)
8. Remove the OEM bottom bolt & clip from the driver side OEM front coil spring. (See Photo # 3)
9. While checking for appropriate slack in ABS lines, brake lines, differential breather hose, & etc. Lower the front axle & remove the OEM front coil springs. (See Photo # 4)
10. Measure straight across (Inward) 3/4" from the center of OEM track bar passenger side lower front axle mounting location. Mark, center punch, & drill a 7/16" hole through both the OEM front & back plates, keeping the drill as straight & square to the bracket as possible. (See Photo # 5)
11. Install the new Skyjacker front coil springs & install the OEM bottom bolt & clip to the new Skyjacker driver side front coil spring. (See Photo # 3)
12. Raise the front axle in order to load the new Skyjacker front coil springs & connect the OEM track bar to the new previously drilled passenger side lower front axle mounting location using the OEM hardware. (See Photo # 5)



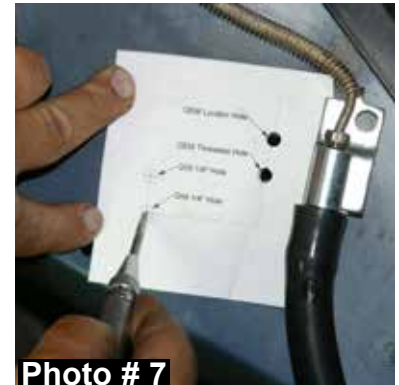
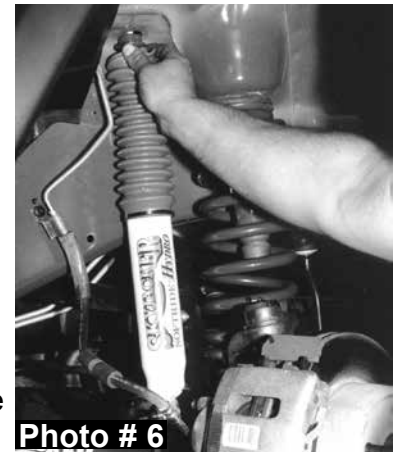
13. Install the new Skyjacker front shocks using the supplied & OEM hardware. (See Photo # 6)

14. Connect the OEM drag link to the OEM pitman arm using the OEM hardware.

15. Connect the OEM sway bar end links to the front axle mounts using the OEM hardware. (See Photo # 2)

16. **JC301BBLT & JC301BHLT Kits:** Remove the OEM brake line from the body & align the OEM mounting locations on the supplied template (See Page # 7) with the OEM mounting locations on the body. (See Photo # 7) Mark, center punch, & drill the two new mounting locations using a 1/4" drill bit. Align the OEM brake line with the new mounting locations & install using the supplied 5/16" x 3/4" thread cutting bolt.

17. Install the front tires / wheels & lower the front of the vehicle to the ground.



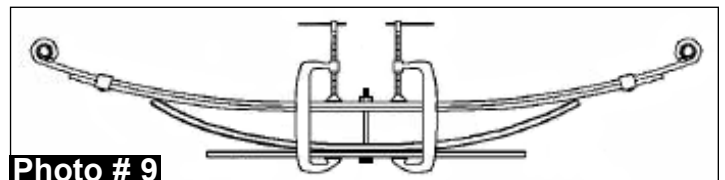
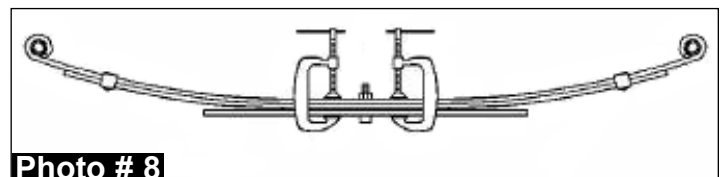
Rear Installation:

1. Block the front tires / wheels, lift the rear of the vehicle, & support the vehicle using jack stands.

2. Support the rear axle & remove the OEM rear shocks & u-bolts.

3. While checking for appropriate slack in ABS lines, brakelines, differential breather hose, & etc. Lower the rear axle to gain access to the OEM rear leaf springs.

4. **Add-A-Leaf Installation:** To perform the installation of the new Skyjacker rear add a leafs properly, you must use two large C-clamps to contain the elastic potential energy of the OEM rear leaf springs when the OEM tie bolts are being removed. Attach & tighten a C-clamp on each end of the OEM rear leaf spring to hold the leaf spring assembly securely together. Using a wrench & locking pliers to hold the head of the OEM tie bolt, loosen & remove. With care, slowly loosen & remove the C-clamps. (See Photo # 8)

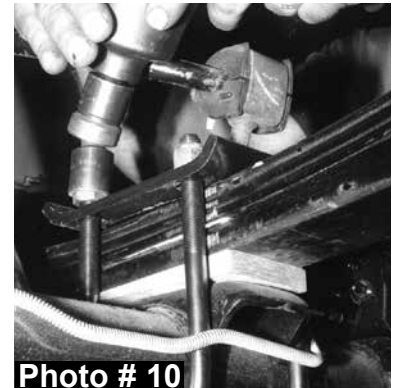


5. Install the new Skyjacker rear add a leafs into the OEM rear leaf springs so the leaves remain progressive longest to shortest while matching the long end & short end of the new rear add-a-leafs to the OEM rear leaf springs. (See Photo # 9)

6. Install the new Skyjacker tie bolts through the OEM rear leaf spring. Do not tighten at this time. (See Photo # 9)

DO NOT USE THE NEW SKYJACKER TIE BOLTS TO DRAW THE OEM LEAF SPRING LEAVES TOGETHER. FAILURE OF ANY COMPONENT CAN CAUSE AN EXPLOSIVE DISASSEMBLY & POSSIBLE INJURY!

7. Place one C-clamp on each side of the new Skyjacker tie bolts & tighten evenly. Once the C-clamps have drawn the leaves securely together, hold the tie bolt heads with locking pliers & tighten the tie bolt nuts. Remove the C-clamps & cut off the excess length of the new tie bolts using a hacksaw. (See Photo # 9)
8. Raise the rear axle & install the OEM u-bolts using the OEM hardware. (Proceed to Step # 11)
9. **Rear Leaf Spring Installation:** Remove the leaf spring eye bolts & remove OEM leaf springs from the vehicle. Install the new Skyjacker leaf springs with thick end of the bottom degree shims pointing toward the rear bumper (Which is also the long end of the leaf spring toward the rear bumper). (See Photo # 10)
10. Raise the rear axle aligning the spring pins with the axle housing & install the new Skyjacker u-bolts using the supplied 1/2" nuts & washers. (Proceed to Step # 11)
11. Install the new Skyjacker rear shocks using the supplied & OEM hardware.
12. Install the rear tires / wheels & lower the rear of the vehicle to the ground.



Final Notes:

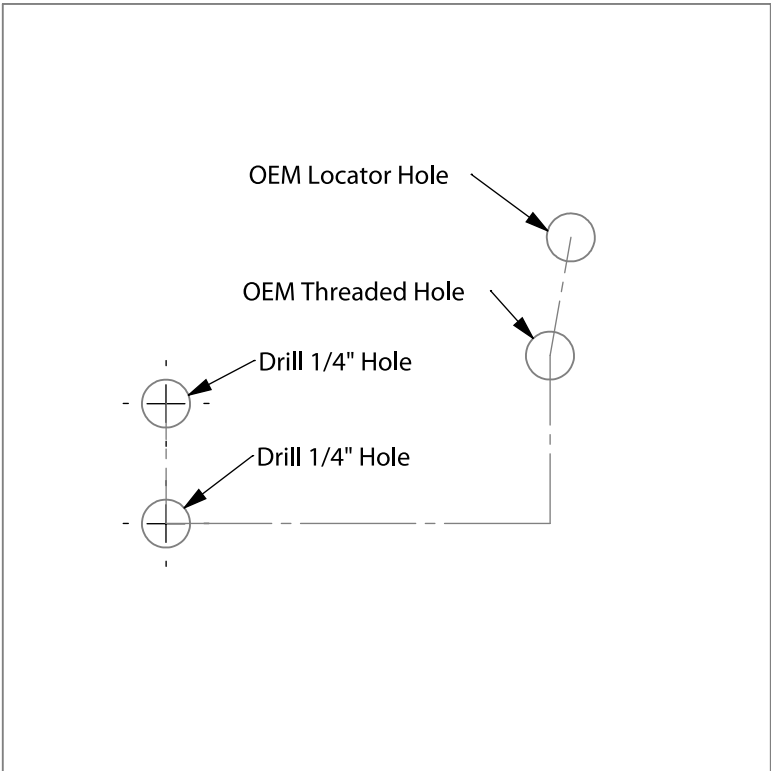
- After the installation is complete, double check that all nuts & bolts are tight. Refer to the following chart for the proper torque specifications. (Do not retighten the nuts & bolts where thread lock compound was used.)
- With the vehicle placed on the ground, cycle the steering lock to lock & inspect the steering, suspension, brake lines, front & rear drivelines, fuel lines, & wiring harnesses for proper operation, tightness, & adequate clearance.
- Have the headlights readjusted to the proper settings.
- Have a qualified alignment center align the vehicle to the OEM specifications.
- After the first 100 miles, check all of the hardware for the proper torque & periodically thereafter.

TORQUE SPECIFICATIONS

<u>INCH SYSTEM</u>			<u>METRIC SYSTEM</u>		
Bolt Size	Grade 5	Grade 8	Bolt Size	Class 8.8	Class 10.9
5/16	15 FT LB	20 FT LB	6MM	5 FT LB	9 FT LB
3/8	30 FT LB	35 FT LB	8MM	18 FT LB	23 FT LB
7/16	45 FT LB	60 FT LB	10MM	32 FT LB	45 FT LB
1/2	65 FT LB	90 FT LB	12MM	55 FT LB	75 FT LB
9/16	95 FT LB	130 FTLB	14MM	85 FT LB	120 FT LB
5/8	135 FT LB	175 FT LB	16MM	130 FT LB	165 FT LB
3/4	185 FT LB	280 FT LB	18MM	170 FT LB	240 FT LB

- The above specifications are not to be used when the bolt is being installed with a bushing.

Seat Belts Save Lives, Please Wear Your Seat Belt.



Brake Line Relocation Template