



www.skyjacker.com

Jeep Wrangler JK (4 Door) 2"- 2.5" Suspension Lift Installation Instructions

Required Tools List:

- Safety Glasses
- Metric / Standard Wrenches & Sockets
- Assorted Drill Bits
- Floor Jack
- Jack Stands
- Measuring Tape
- Torque Wrench



Before beginning the installation, thoroughly & completely read these instructions & the enclosed driver's WARNING NOTICE. Affix the WARNING decal in the passenger compartment in clear view of all occupants. Please refer to the Parts List to insure that all parts & hardware are received prior to the disassembly of the vehicle. If any parts are found to be missing, contact SKYJACKER® Customer Service at 318-388-0816 to obtain the needed items. If you have any questions or reservations about installing this product, contact SKYJACKER® Technical Assistance at 318-388-0816.

Make sure you park the vehicle on a level concrete or asphalt surface. Many times a vehicle is not level (side-to-side) from the factory & is usually not noticed until a lift kit has been installed, which makes the difference more visible. Using a measuring tape, measure the front & rear (both sides) from the ground up to the center of the fender opening above the axle. Record this information below for future reference.

Driver Side Front: _____ Passenger Side Front: _____

Driver Side Rear: _____ Passenger Side Rear: _____

Important Notes:

- If larger tires (10% more than the OEM diameter) are installed, speedometer recalibration will be necessary. Contact your local Jeep dealer or an authorized dealer for details.
- After installation, a qualified alignment facility is required to align the vehicle to the OEM specifications.

Component Box Breakdown:

Part #: JK25BPBLT / JK25BPHLT / JK25BPMLT / JK25BPNLT / JK25BPBSR / JK25BPHSR / JK25BPNSR / JK2500BPMSR

Item #	Description	Qty	Item #	Description	Qty
JL12FS-DR	JK FRT COIL SPRING	2	B8565/H7065/M9565/N8065	FRONT SHOCK	2
JK25RS-DR	JK REAR COIL SPRING	2	(Included With LT Kits)		
JK24RTB-B	JK REAR TRK BAR BRK	1	B8537/H7037/M9537/N8037	REAR SHOCK	2
JK25RBS-S	JK REAR BMP STP BRK	2	(Included With SR Kits)		
JKBRC15-B	JK REAR TRK BAR BRC	1	B8567/H7067/M9567/N8067	REAR SHOCK	2
HB-JK2500	HDWR BAG: JK 2-2.5"	1	(Included With LT Kits)		
HB-JKBRC15	HDWR BAG: JKBRC15	1	I-JK250BP	INST SHEET	1
B8535/H7035/M9535/N8035	FRONT SHOCK	2			
(Included With SR Kits)					

Hardware Bag Breakdown:

Part # HB-JK2500

Item #	Description	Qty	Item #	Description	Qty
38X234BHB	3/8 X 2 3/4 BUTTON HEAD BOLT	2	716X1FTB	7/16 X 1 FINE TRHEAD BOLT	1
38SAEW	3/8 SAE WASHER	2	716SAEW	7/16 SAE WASHER	1
38CTN	3/8 COARSE THREAD LOCK NUT	2	716FTN	7/16 FINE THREAD LOCK NUT	1
516X1FTB	5/16 X 1 FINE THREAD BOLT	4	916X3FTB	9/16 X 3 FINE THREAD BOLT	1
516SAEW	5/16 SAE WASHER	8	916SAEW	9/16 SAE WASHER	3
516FTN	5/16 FINE THREAD LOCK NUT	4	916FTN	9/16 FINE THREAD LOCK NUT	2
12X114FTB	1/2 X 1 1/4 FINE THREAD BOLT	1	CS1625	CRUSH SLEEVE / JKRTB	1
12SAEW	1/2 SAE WASHER	1	BSS3020-S	FRONT BUMP STOP SPACER	2
12FTN	1/2 FINE THREAD LOCK NUT	1	916X312FTB	9/16 X 3 1/2 FINE THREAD BOLT	1

Part #: HB-JKBRC15

Item #	Description	Qty	Item #	Description	Qty
516X1CTB	5/16 X 1 COARSE THREAD BOLT	3	516LW	5/16 LOCK WASHER	3
516XTFW	5/16 THICK FLAT WASHER	3			

Front Installation:

1. With the vehicle on flat level ground, set the emergency brake, & block the rear tires / wheels.
2. Raise the front of the vehicle & support the frame rails using jack stands.
3. Remove the front tires / wheels.
4. Disconnect the OEM front sway bar end links using a 18mm socket.
5. Disconnect the OEM front track bar from the axle using a 21mm socket. (See Photo # 1)
6. If installing a new Skyjacker Steering Stabilizer (Part # 7003), remove the OEM steering stabilizer using a 18mm socket. (See Photo # 2)
7. Remove the OEM front shocks using a 18mm socket.
8. Lower the front differential & remove the OEM front coil springs. (See Photo # 3)
9. Place the new Skyjacker bump stop spacers on the center of the OEM bump stop pad located on the front axle. Mark & drill using a 25/64" drill bit. (See Photo # 4)
10. Install the new Skyjacker bump stop spacers & new Skyjacker front coil springs. Attach the new bump stop spacers to the axle using the supplied 3/8" x 2 3/4" button head bolts, washers, & nuts. (See Photo # 5)
11. Raise the front differential in order to load the new Skyjacker front coil springs & attach the OEM front track bar to the axle using the OEM hardware.
12. Attach the OEM front sway bar end links using the OEM hardware.
13. If installing a new Skyjacker steering stabilizer (Part # 7003), install it at this time. (See Photo # 6)



Photo # 1



Photo # 2



Photo # 3



Photo # 4



Photo # 5



Photo # 6

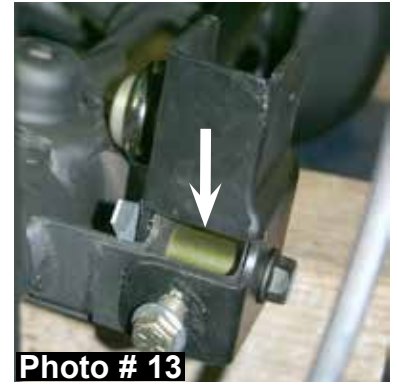
14. Install the new Skyjacker front shocks using the supplied hardware. (See Photo # 7)
15. Install the front tires / wheels & lower the vehicle to the ground.

Rear Installation:

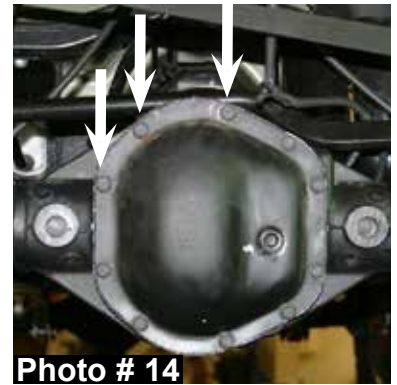
16. Block the front tires / wheels, raise the rear of the vehicle, & properly support the frame rails using jack stands.
17. Remove the rear tires / wheels.
18. Remove the OEM rear shocks using a 16mm socket. (See Photo # 8)
19. Disconnect the OEM rear track bar from the axle using a 21mm socket. (See Photo # 9)
20. Disconnect the OEM rear sway bar end links using a 18mm socket.
21. Disconnect the OEM ABS line & brake line from the frame. (See Photo # 10)
22. Lower the rear differential & remove the OEM rear coil springs.
23. Install the new Skyjacker rear coil springs & raise the rear differential in order to load the new rear coil springs.
24. Place the new Skyjacker rear track bar bracket over the OEM track bar bracket on the axle. With the new track bar bracket seated flush, clamp the new track bar bracket in place, mark with a center punch, & drill the new center mounting holes using a 15/32" drill bit. (See Photo # 11)
25. Install the new Skyjacker track bar bracket using the supplied 7/16" x 1" fine thread bolt, washer, & nut. (See Photo # 12)



26. It will be necessary to drill through the driver side bottom of the OEM track bar bracket & through the new Skyjacker track bar bracket. Drill using a 17/32" drill bit. Once drilled, install the supplied 1/2" x 1 1/4" fine thread bolt, washer, & nut. Install the supplied 9/16" x 3 1/2" bolt, washers, & nut at the bottom location being sure to use the supplied crush sleeve. (See Arrow in Photo # 13)

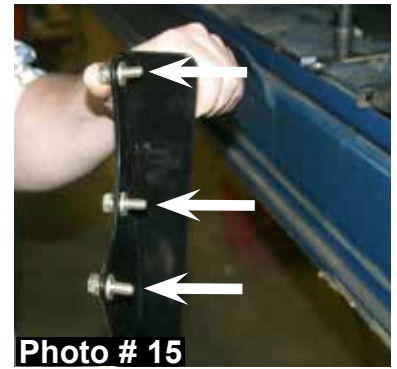


27. Remove the three OEM upper left differential cover bolts. (See Photo # 14)



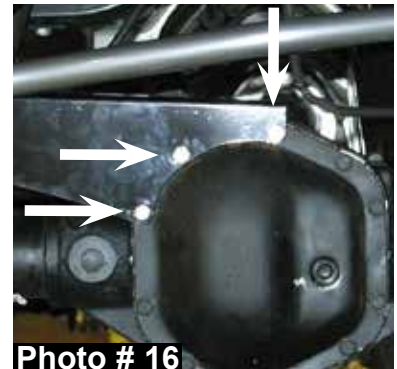
28. Attach the new Skyjacker track bar brace to the rear differential using the supplied 5/16" x 1" coarse thread bolts, 5/16" extra thick flat washers, 5/16" lock washers, & a 1/2" socket / wrench. **Do not tighten** at this time. The end of the new track bar brace should be between the new track bar bracket & the new coil spring. **Note:** Use the 5/16" extra thick flat washers between the new track bar brace & the rear differential cover. Use the 5/16" lock washers under the head of each 5/16" bolt. (See Photo # 15 & # 16) **Do not tighten at this time.**

29. Attach the OEM rear track bar & the end of the new Skyjacker track bar brace to the lower mounting location of the new Skyjacker track bar bracket using the supplied 9/16" x 3" fine thread bolt, washers, & nut. Tighten the supplied 5/16" bolts at the rear differential using a 1/2" socket / wrench & the supplied 9/16" x 3" bolt on the track bar using a 13/16" socket / wrench. (See Photo # 17)



30. Attach the new Skyjacker rear bump stop spacers to the OEM location on the axle using the supplied 5/16" x 1" fine thread bolts, washers, & nuts. (See Photo # 18) **Note:** Be sure to install the new bump stop spacers so the angled end is towards the rear of the vehicle.

31. Attach the OEM rear sway bar end links using the OEM hardware.



32. Attach the OEM ABS line & brake line to the frame using the OEM hardware.



33. Install the new Skyjacker rear shocks using the supplied hardware.
(See Photo # 19)

34. Install the rear tires / wheels & lower the vehicle to the ground.

Final Notes:

- After the installation is complete, double check that all nuts & bolts are tight. Refer to the following chart for the proper torque specifications. (Do not retighten the nuts & bolts where thread lock compound was used.)
- With the vehicle placed on the ground, cycle the steering lock to lock & inspect the steering, suspension, brake lines, front & rear drivelines, fuel lines, & wiring harnesses for proper operation, tightness, & adequate clearance.
- Have the headlights readjusted to the proper settings.
- Have a qualified alignment center align the vehicle to the OEM specifications.
- After the first 100 miles, check all hardware for the proper torque & periodically thereafter.



Photo # 19

<u>TORQUE SPECIFICATIONS</u>					
<u>INCH SYSTEM</u>			<u>METRIC SYSTEM</u>		
Bolt Size	Grade 5	Grade 8	Bolt Size	Class 8.8	Class 10.9
5/16	15 FT LB	20 FT LB	6MM	5 FT LB	9 FT LB
3/8	30 FT LB	35 FT LB	8MM	18 FT LB	23 FT LB
7/16	45 FT LB	60 FT LB	10MM	32 FT LB	45 FT LB
1/2	65 FT LB	90 FT LB	12MM	55 FT LB	75 FT LB
9/16	95 FT LB	130 FTLB	14MM	85 FT LB	120 FT LB
5/8	135 FT LB	175 FT LB	16MM	130 FT LB	165 FT LB
3/4	185 FT LB	280 FT LB	18MM	170 FT LB	240 FT LB

• The above specifications are not to be used when the bolt is being installed with a bushing.

Seat Belts Save Lives, Please Wear Your Seat Belt.