



www.skyjacker.com

**REQUIRED TOOL LIST:**

- Safety Glasses
- Metric / Standard Wrenches & Sockets
- Allen Wrenches
- Drill & Assorted Drill Bits
- Grinder / Cut Off Wheel
- Pipe Wrench
- Floor Jack
- Jack Stands
- Measuring Tape
- Torque Wrench

**Jeep Wrangler JK  
4" & 6" Long Arm Suspension Lift  
Installation Instructions**



Before beginning the installation, thoroughly & completely read these instructions & the enclosed driver's WARNING NOTICE. Affix the WARNING decal in the passenger compartment in clear view of all occupants. Please refer to the Parts List to insure that all parts & hardware are received prior to the disassembly of the vehicle. If any parts or hardware are found to be missing, contact SKYJACKER® Customer Service at 318-388-0816 to obtain the needed items. If you have any questions or reservations about installing this product, contact SKYJACKER® Technical Assistance at 318-388-0816.

Make sure you park the vehicle on a level concrete or asphalt surface. Many times a vehicle is not level (side-to-side) from the factory & is usually not noticed until a lift kit has been installed, which makes the difference more visible. Using a measuring tape, measure the front & rear (both sides) from the ground up to the center of the fender opening above the axle. Record this information below for future reference.

Driver Side Front: \_\_\_\_\_

Passenger Side Front: \_\_\_\_\_

Driver Side Rear: \_\_\_\_\_

Passenger Side Rear: \_\_\_\_\_

**Important Notes:**

- The draglink must be adjusted to center the steering wheel before the vehicle is driven. Failure to do so will cause computer errors, odd handling characteristics, & poor performance.
- Replacement front & rear drive shafts are recommended, contact Skyjacker for more info.
- This lift is determined from the amount of lift to the front of the vehicle, while only lifting the rear to a position level with the front.
- If larger tires (10% more than the OEM diameter) are installed, speedometer recalibration will be necessary. Contact your local Jeep dealer or an authorized dealer for details.
- After installation, a qualified alignment facility is required to align the vehicle to the OEM specifications.

## Component Box Breakdown:

### Part #: JK45LA / 4" Lift (Not required when installing a Skyjacker coil-over kit)

Item #	Description	Qty
ABSS2535	FRONT BUMP STOP SPACER	2
JK40RBS-S	REAR BUMP STOP BRACKET	2
JK24RTB-B	REAR TRACK BAR BRACKET	1
JKBRC15-B	REAR TRACK BAR BRACE	1
SBE126	FRONT SWAY BAR END LINKS	1

Item #	Description	Qty
SBE504	REAR SWAY BAR END LINKS	1
HB-JK24RTB	HDWR BG:REAR TRACK BAR BK	1
HB-JK4BL	HDWR BG:BRAKE LINE BRKTS	1
HB-JK40BSS	HDWR BG:BUMP STOP SPACER	1
HB-JKBRC15	HDWR BG:REAR TRACK BAR BR	1

### Part #: SBE126

Item #	Description	Qty
SBE102-L	FRONT SWAY BAR END LINK	2
SBE-E3	FRT SWAY BAR END LINK EYE	4

Item #	Description	Qty
14X112SPIN	1/4 X 1 1/2 SNAPPER PIN	4
HB-SBE126	HDWR BG:FRT SWAY BAR LINKS	1

### Part #: SBE504

Item #	Description	Qty
SBE506-L	REAR SWAY BAR END LINK	2

Item #	Description	Qty
HB-SBE504	HDWR BG:REAR SWAY BAR LKS	1

## Hardware Bag Breakdown:

### Part # HB-SBE126

Item #	Description	Qty
403712	ES22 SLEEVE	4
12X212BHCTB	1/2 X 2 1/2 BUTTON HEAD BOLT	2

Item #	Description	Qty
12USSW	1/2 USS WASHER	4
12CTN	1/2 COARSE THREAD LOCK NUT	2

### Part # HB-SBE504

Item #	Description	Qty
HG58125	HOURLASS POLY BUSHING	4
403712	ES22 SLEEVE	4
12X212BHCTB	1/2 X 2 1/2 BUTTON HEAD BOLT	4

Item #	Description	Qty
12SAEW	1/2 SAE WASHER	4
12USSW	1/2 USS WASHER	4
12CTN	1/2 COARSE THREAD LOCK NUT	4

### Part # HB-JK24RTB

Item #	Description	Qty
CS1625	CRUSH SLEEVE	1
12X114FTB	1/2 X 1 1/4 FINE THREAD BOLT	1
12FTN	1/2 FINE THREAD LOCK NUT	1
12SAEW	1/2 SAE WASHER	1
716X1FTB	7/16 X 1 FINE THREAD BOLT	1
716FTN	7/16 FINE THREAD LOCK NUT	1

Item #	Description	Qty
716SAEW	7/16 SAE WASHER	1
916X3FTB	9/16 X 3 FINE THREAD BOLT	1
916X312FTB	9/16 X 3 1/2 FINE THREAD BOLT	1
916FTN	9/16 FINE THREAD LOCK NUT	2
916SAEW	9/16 SAE WASHER	4

### Part # HB-JK4BL

Item #	Description	Qty
JKBE4D	BRAKE LINE BRACKET	2
14X1FTB	1/4 X 1 FINE THREAD BOLT	2

Item #	Description	Qty
14SAEW	1/4 SAE WASHER	4
14FTN	1/4 FINE THREAD LOCK NUT	2

## Part # HB-JK40BSS

Item #	Description	Qty
516X1FTB	5/16 X 1 FINE THREAD BOLT	4
516FTN	5/16 FINE THREAD LOCK NUT	4
516SAEW	5/16 SAE WASHER	8

Item #	Description	Qty
38X4BHB	3/8 X 4 BUTTON HEAD BOLT	2
38CTN	3/8 COARSE THREAD LOCK NUT	2
38SAEW	3/8 SAE WASHER	2

## Part # HB-JKBRC15

Item #	Description	Qty
516X1CTB	5/16 X 1 COARSE THREAD BOLT	3
516XTFW	5/16 EXTRA THICK FLAT WASH	3

Item #	Description	Qty
516LW	5/16 LOCK WASHER	3

## Component Box Breakdown:

### Part #: JK67LA / 6" Lift (Not required when installing a Skyjacker coil-over kit)

Item #	Description	Qty
ABSS2535	FRONT BUMP STOP SPACER	2
BP50S	FRONT POLY BUMP STOP	2
JK40RBS-S	REAR BUMP STOP BRACKET	2
JK6RTB-B	REAR TRACK BAR BRACKET	1
JKBL60	FRONT & REAR BRAKE LINES	1
JKBRC15-B	REAR TRACK BAR BRACE	1

Item #	Description	Qty
JKRBS10	REAR POLY BUMP STOP	2
SBE127	FRONT SWAY BAR END LINKS	1
SBE507	REAR SWAY BAR END LINKS	1
HB-JK24RTB	HDWR BG:REAR TRACK BAR BK	1
HB-JK40BSS	HDWR BG:BUMP STOP SPACER	1
HB-JKBRC15	HDWR BG:REAR TRACK BAR BR	1

## Part #: JKBL60

Item #	Description	Qty
JKBL60S	FRONT & REAR BRAKE LINE	4
BE15	BRAKE LINE BRACKET	4
3CCW	COPPER CRUSH WASHER	8

Item #	Description	Qty
BTIE	RED BOOT TIE	4
HC1	HORSESHOE CLIP	4
I-BL	INSTRUCTIONS: BRAKE LINES	1

## Part #: SBE127

Item #	Description	Qty
SBE103-L	FRONT SWAY BAR END LINK	2
SBE-E3	FRT SWAY BAR END LINK EYE	4

Item #	Description	Qty
14X112SPIN	1/4 X 1 1/2 SNAPPER PIN	4
HB-SBE126	HDWR BG:FRT SWAY BAR LINKS	1

## Part #: SBE507

Item #	Description	Qty
SBE507-L	REAR SWAY BAR END LINK	2

Item #	Description	Qty
HB-SBE504	HWDR BG:REAR SWAY BAR LKS	1

## Hardware Bag Breakdown:

### Part # HB-SBE126

Item #	Description	Qty
403712	ES22 SLEEVE	4
12X212BHCTB	1/2 X 2 1/2 BUTTON HEAD BOLT	2

Item #	Description	Qty
12USSW	1/2 USS WASHER	4
12CTN	1/2 COARSE THREAD LOCK NUT	2

## Part # HB-SBE504

Item #	Description	Qty
HG58125	HOURGLASS POLY BUSHING	4
403712	ES22 SLEEVE	4
12X212BHCTB	1/2 X 2 1/2 BUTTON HEAD BOLT	4

Item #	Description	Qty
12SAEW	1/2 SAE WASHER	4
12USSW	1/2 USS WASHER	4
12CTN	1/2 COARSE THREAD LOCK NUT	4

## Part # HB-JK24RTB

Item #	Description	Qty
CS1625	CRUSH SLEEVE	1
12X114FTB	1/2 X 1 1/4 FINE THREAD BOLT	1
12FTN	1/2 FINE THREAD LOCK NUT	1
12SAEW	1/2 SAE WASHER	1
716X1FTB	7/16 X 1 FINE THREAD BOLT	1
716FTN	7/16 FINE THREAD LOCK NUT	1

Item #	Description	Qty
716SAEW	7/16 SAE WASHER	1
916X3FTB	9/16 X 3 FINE THREAD BOLT	1
916X312FTB	9/16 X 3 1/2 FINE THREAD BOLT	1
916FTN	9/16 FINE THREAD LOCK NUT	2
916SAEW	9/16 SAE WASHER	4

## Part # HB-JK40BSS

Item #	Description	Qty
516X1FTB	5/16 X 1 FINE THREAD BOLT	4
516FTN	5/16 FINE THREAD LOCK NUT	4
516SAEW	5/16 SAE WASHER	8

Item #	Description	Qty
38X4BHB	3/8 X 4 BUTTON HEAD BOLT	2
38CTN	3/8 COARSE THREAD LOCK NUT	2
38SAEW	3/8 SAE WASHER	2

## Part # HB-JKBRC15

Item #	Description	Qty
516X1CTB	5/16 X 1 COARSE THREAD BOLT	3
516XTFW	5/16 EXTRA THICK FLAT WASH	3

Item #	Description	Qty
516LW	5/16 LOCK WASHER	3

## Component Box Breakdown:

### Part #: JK46LA-SX / 4" & 6" Lift

Item #	Description	Qty
JKLL46FDSX-AS	FRONT DRIVER LWR LINK ASY	1
JKLL46FPSX-AS	FRONT PASS LWR LINK ASY	1
JKLL46R2SX-AS	REAR LOWER LINK ASY	2
JKUL46FSX-ASY	FRONT UPPER LINK ASY	2
JKUL46RSX-ASY	REAR UPPER LINK ASY	2
JK46LAFLB-D	FRONT DRIVER FRAME BRKT	1
JK46LAFLB-P	FRONT PASS FRAME BRKT	1

Item #	Description	Qty
JK46LARLB2-D	REAR DRIVER FRAME BRKT	1
JK46LARLB2-P	REAR PASS FRAME BRKT	1
HB-JK6FLB	HDWR BG:FRONT LINK BRKT	1
HB-JK6RLB2	HDWR BG:REAR LINK BRKT	1
HB-JKULF-SX	HDWR BG:UPPER FRONT LKS	1
HB-JKULR-SX	HDWR BG:UPPER REAR LKS	1
I-JK4601	INST SHEET:JK LONG ARM KT	1

## Hardware Bag Breakdown:

### Part # HB-JK6FLB

Item #	Description	Qty
916X112FTB	9/16 X 1 1/2 FINE THREAD BOLT	2
916SAEW	9/16 SAE WASHER	4
916FTN	9/16 FINE THREAD LOCK NUT	2

Item #	Description	Qty
12X112FTB	1/2 X 1 1/2 FINE THREAD BOLT	2
12SAEW	1/2 SAE WASHER	4
12FTN	1/2 FINE THREAD LOCK NUT	2

## Part # HB-JK6RLB2

Item #	Description	Qty
12X4FSB	1/2 X 4 FLAT SOCKET BOLT	1
12X412FSB	1/2 X 4 1/2 FLAT SOCKET BOLT	1
12X412FTB	1/2 X 4 1/2 FINE THREAD BOLT	2
12CTN	1/2 COARSE THREAD LOCK NUT	2

Item #	Description	Qty
12FTN	1/2 FINE THREAD LOCK NUT	2
12SAEW	1/2 SAE WASHER	6
CS2700	CRUSH SLEEVE	2

## Part # HB-JKULF-SX

Item #	Description	Qty
12MMX80B	12MM X 80MM METRIC BOLT	2
12SAEW	1/2 SAE WASHER	4

Item #	Description	Qty
12MMN	12MM METRIC NUT	2

## Part # HB-JKULR-SX

Item #	Description	Qty
LS2313	LINK SLEEVE	2
2619	POLY BUSHING	4

Item #	Description	Qty
ZF316	ZERK FITTING / ALEMITE	2

## Component Box Breakdown:

### Part #: JKFTBA717 / 4" & 6" Lift

Item #	Description	Qty
JKFTBA10-B	FRONT ADJUST TRACK BAR	1
RR34X14RB	3/4"RH ROD END / 14MM BUSH	1

Item #	Description	Qty
34RFTJN	3/4 RIGHT HAND JAM NUT	1

## **Front Installation:**

1. Park the vehicle on flat level ground, set the emergency brake, & block the rear tires / wheels.
2. Raise the front of the vehicle, support the frame rails using jack stands, & disconnect the OEM drag link from the OEM pitman arm.
3. Disconnect the OEM front sway bar end links using a 18mm socket & remove the OEM front track bar using a 21mm socket. (See Photo # 1)
4. If installing a Skyjacker steering stabilizer (Part # 7003), remove the OEM steering stabilizer using a 18mm socket. (See Photo # 2)
5. Disconnect the OEM front shocks using a 18mm socket. Remove the front tires / wheels & remove the OEM front coil springs. (See Photo # 3) Remove the OEM front shocks.
6. Locate the OEM lower control arm mount on the frame.  
**Note:** It will be necessary to modify these mounts to allow for the installation of the new Skyjacker lower control arm brackets. Remove the OEM automatic transmission skid plate & remove the OEM lower control arms, one side at a time.
7. Using a grinder, remove the weld attaching the inner mounting plate to the frame. All that will be left is the single mounting plate under the frame. (See the Arrow in Photo # 4)
8. Using a transmission jack, support the rear of the transfer case. Disconnect the transmission from the OEM cross member. Raise the transmission / transfer case approximately 2". This will allow easier access around the exhaust to install the new Skyjacker front control arm brackets.





9. Remove the inner most mounting bolt on the transmission cross member using a 18mm socket. (See Photo # 5)
10. Place the OEM cross member bolt through the back of the new Skyjacker control arm bracket & install. (See Photo # 6)
11. Install the OEM skid plate bolt that was removed in Step # 6. (See Photo # 7)
12. Install the supplied 9/16" x 1 1/2" fine thread bolt, washers, & nut at the OEM control arm position. (See Photo # 8)
13. With all bolts tight, mark & drill the new location on the outside of the frame using a 1/2" drill bit. (See Photo # 9) Once drilled, install the supplied 1/2" x 1 1/2" fine thread bolt, washers, & nut. **Note:** It may be necessary to remove the lower bolt first to allow the installation of the new outer frame bolt. **Note:** The passenger side control arm can be installed along with the bracket. If not, it will be necessary to raise the transmission again later to install the control arm.

**Note:** If installing a Skyjacker front coil-over kit, proceed to Step # 18 at this time.

14. Locate the new Skyjacker front bump stop spacers. Place the new bump stop spacers on the center of the bump stop pads located on the front axle. Mark & drill using a 25/64" drill bit. (See Photo # 10) **6" Kits:** Remove the OEM upper bump stop & reinstall the new Skyjacker poly bump stop.



Photo # 5



Photo # 6



Photo # 9



Photo # 7

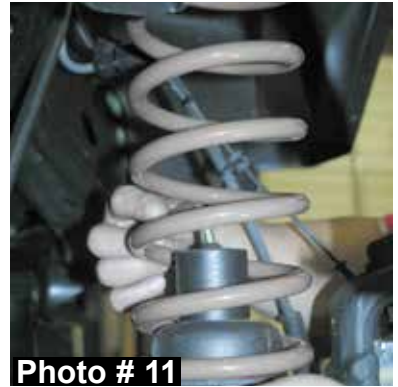


Photo # 10



Photo # 8

15. Place the new bump stop spacers inside the new Skyjacker coil springs & install the new coil springs. Attach the new bump stop spacers to the axle using the supplied 3/8" X 4" button head bolts with one washer under each nut. (See Photo # 11)
16. Let the weight of the frame down onto the new Skyjacker coil springs.
17. Assemble the new Skyjacker sway bar end links using the supplied steel sleeves. Attach the eyes using the supplied 1/4" snap pins. Attach the new sway bar end links to the axle using the OEM hardware. Attach to the OEM sway bar using the supplied 1/2" x 2 1/2" button head bolt & use one large USS washer under each nut. (See Photo # 12)
18. If installing a new Skyjacker steering stabilizer (Part # 7003), install at this time. (See Photo Below)



19. Locate the new Skyjacker lower control arms (Fronts are shorter than the rear).
20. The recommended pre-set length of the new Skyjacker control arms are as follows:

#### **4" Measurements**

Lower Front should be set @ 31 1/4"  
Lower Rear should be set @ 34 7/8"  
Upper Front should be set @ 18 3/8"  
Upper Rear should be set @ 18"

#### **6" Measurements**

Lower Front should be set @ 32"  
Lower Rear should be set @ 35"  
Upper Front should be set @ 18 3/4"  
Upper Rear should be set @ 18 1/16"

The final length will need to be set by a qualified alignment facility.



21. Install the new lower control arms using the OEM hardware. (See Photo # 13 & # 14) Install the new lower control arms with the bend up & towards the middle of the vehicle. Once installed, tighten the jam nut. Be sure that once tightened, the rod end sits square inside the mount. With the new lower control arms installed, lower the transmission & re-attach to the OEM cross-member.



Photo # 13

22. With the new lower control arms installed, remove the OEM upper arms. It will be necessary to cut off the OEM bolt at the frame due to it hitting the exhaust when trying to remove. Install the new Skyjacker upper control arms using the same process as the lower. Attach to the frame using the supplied 12mm x 80mm bolts, washers, & nuts. (See Photo # 15)



Photo # 14

**Note:** If installing a Skyjacker front coil-over kit, proceed to Step # 1 of Rear Installation at this time.

23. **6" Kits:** Remove the OEM front brakelines & install the new Skyjacker stainless steel braided lines. Attach to the frame using the supplied 90 degree brackets & OEM hardware. (See Photo # 16) Install the new Skyjacker front shocks.



Photo # 15

24. Connect the OEM drag link to the OEM pitman arm. Install the front tires / wheels & lower the vehicle to the ground.

25. Install the fixed end of the new Skyjacker adjustable front track bar to the upper track bar mounting location using the OEM hardware & a 21mm socket or wrench. **Do not tighten at this time.** (See Photo # 17)



Photo # 16

26. Using a tape measure, check the vehicle to make sure the body is centered over the front tires / wheels & adjust the new Skyjacker rod end to align with the lower track bar mounting location.

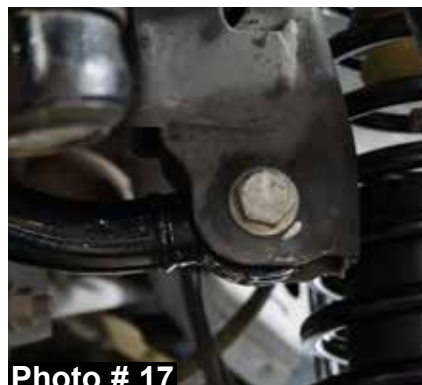


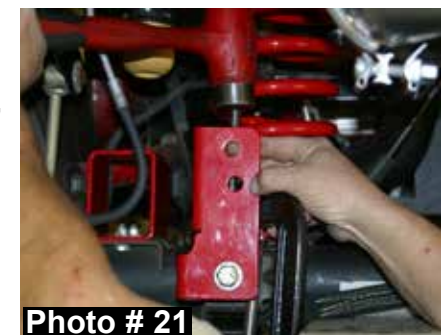
Photo # 17

27. Install the adjustable end of the new Skyjacker adjustable front track bar to the lower track bar mounting location using the OEM hardware & a 21mm socket or wrench. **Do not tighten at this time.** (See Photo # 18)
28. Tighten the upper & lower track bar mounting hardware to the OEM specifications using a 21mm socket or wrench.
29. Tighten the jam nut of the new Skyjacker rod end using an adjustable wrench.



## **Rear Installation:**

1. Block the front tires / wheels, raise the rear of the vehicle, & properly support the frame rails using jack stands. Remove the OEM rear shocks using a 16mm socket.
2. Disconnect the OEM rear track bar from the axle using a 21mm socket. (See Photo # 19) Disconnect the OEM rear sway bar end links using a 18mm socket. Disconnect the OEM ABS line & brake line from the frame. (See Photo # 20)
3. Lower the axle down & remove the OEM rear coil springs.
4. Install the new Skyjacker rear coil springs & raise the rear differential in order to load the new rear coil springs.
5. Place the new Skyjacker rear track bar bracket over the OEM track bar bracket on the axle. With the new track bar bracket seated flush, clamp the new track bar bracket in place (mark using a center punch) & drill the new center mounting holes using a 15/32" drill bit. (See Photo # 21)
6. Install the supplied 7/16" x 1" fine thread bolt & nut. Use one 7/16" washer under the nut. (See Photo # 22)



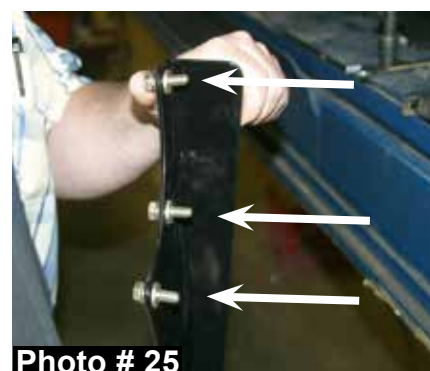
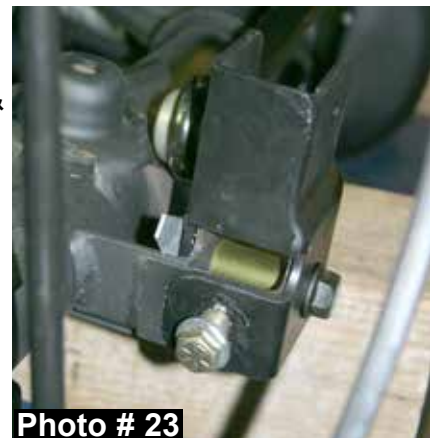
7. Mark, center punch, & drill through the driver side bottom of the OEM bracket & through the new Skyjacker bracket using a 17/32" drill bit. Install the supplied 1/2" x 1 1/4" fine thread bolt, washer, & nut. Install the supplied crush sleeve, 9/16" x 3 1/2" bolt, washers, & nut at the bottom location. (See Arrow in Photo # 23)

8. Remove the three OEM upper left differential cover bolts. (See Photo # 24)

9. Attach the new Skyjacker track bar brace to the rear differential using the supplied 5/16" x 1" coarse thread bolts, 5/16" extra thick flat washers, & 5/16" lock washers. **Do not tighten at this time.** The end of the new track bar brace should be between the new track bar bracket & the new coil spring. **Note:** Use the 5/16" extra thick flat washers between the new track bar brace & the rear differential cover. Use the 5/16" lock washers under the head of each 5/16" bolt. (See Photo # 25 & # 26) **Do not tighten at this time.**

10. Attach the OEM rear track bar & the end of the new Skyjacker track bar brace to the upper mounting location of the new Skyjacker track bar bracket using the supplied 9/16" x 3" fine thread bolt, washers, & nut. Tighten the supplied 5/16" bolts at the rear differential & the supplied 9/16" x 3" bolt on the track bar. (See Photo # 27) **Do not tighten at this time.**

11. **6" Kits:** Remove the OEM upper bump stops & install the new Skyjacker bump stops. (See Photo # 28)





12. Attach the new Skyjacker rear bump stop brackets to the OEM location on the axle using the supplied 5/16" x 1" fine thread bolts, washers, & nuts. (See Photo # 29) Be sure to install the new bump stop brackets so the angled end is towards the rear of the vehicle.
13. Install the new Skyjacker sway bar end links using the supplied 5/8" hourglass bushings & steel sleeves. Attach using the supplied 1/2" x 2 1/2" button head bolts & nuts. One large USS washer will be used under the head of each bolt with the smaller SAE washer under the nut. (See Photo # 29)
14. **6" Kits:** Remove the OEM rear brakelines & install the new Skyjacker brake lines. Install using the supplied 90 degree bracket. The new bracket will attach to the OEM location on the frame using the OEM hardware. (See Photo # 30) **4" Kits:** Will relocate the OEM brake line on the frame using the supplied brackets & 1/4" hardware. Position the brackets so the bend is under the frame. Make sure there is space between the hard brake line & the frame rail. (See Photo # 31)
15. Remove the OEM driver side lower control arm & disconnect the exhaust behind the catalytic converter. **Note:** It will be necessary to disconnect the exhaust hangers to allow for drilling of the mounting hole inside the frame rail.
16. Using a cut off wheel, cut the welds that attach the OEM lower control arm brackets to the frame & remove 1" from the bottom of each side of the body mount bracket. (See Photo # 32 & Arrows # 33) Once removed, grind the frame smooth.



Photo # 29



Photo # 30



Photo # 31

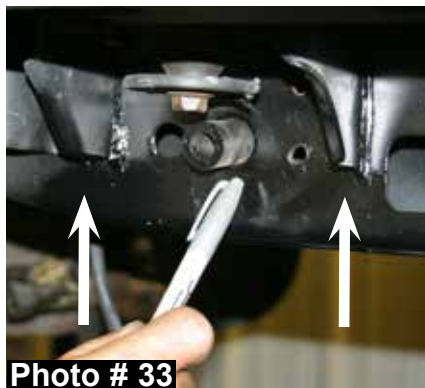


Photo # 33



Photo # 32

17. Locate the new Skyjacker lower control arm brackets & crush sleeves. Install the crush sleeve at the OEM location in the frame. (See Photo # 34)
18. Install the new control arm bracket on the driver side using the supplied 1/2" x 4 1/2" fine thread bolt, washers, & nut. (See Photo # 34)
19. With the new control arm bracket seated flush against the frame rail, mark the front mounting locations on both the inside & outside of frame rail. (See Photo # 35)
20. Lower the new control arm bracket & drill the mounting location from each side of the frame rail using a 1/2" drill bit. (See Photo # 36)
21. Once drilled, install the supplied 1/2" x 4 1/2" fine thread bolt, washers, & nut. (See Photo # 37)
22. Repeat this process on the passenger side. **Note:** It will be necessary to disconnect the drive shaft & remove the fuel tank to allow access to the frame. Attach the passenger side bracket using the supplied 1/2" x 4" counter sunk bolt for mounting the rear of the new bracket & the supplied 1/2" x 4 1/2" counter sunk bolt for mounting the front of the new bracket. The bolts will install from the inside of the frame rail. (See Photo # 38) Use one washer & nut on the outside of the frame. Once installed, reinstall the fuel tank & drive shaft.
23. Install the new Skyjacker lower control arms using the same process as the front arms. (Install the new lower control arms with the rod end towards the outside of the vehicle.) (See Photo # 39)





24. Remove the OEM upper rear control arms & install the new Skyjacker upper rear control arms. (Install the new upper control arms with the rod end towards the outside of the vehicle.)
25. Install the new Skyjacker rear shocks, rear tires / wheels, & lower the vehicle to the ground. (See Photo # 40)



### **Final Notes:**

- The draglink must be adjusted to center the steering wheel before the vehicle is driven. Failure to do so will cause computer errors, odd handling characteristics, & poor performance.
- After the installation is complete, double check that all nuts & bolts are tight. Refer to the following chart for the proper torque specifications. (Do not retighten the nuts & bolts where thread lock compound was used.)
- With the vehicle placed on the ground, cycle the steering lock to lock & inspect the steering, suspension, brake lines, front & rear drivelines, fuel lines, & wiring harnesses for proper operation, tightness, & adequate clearance.
- Have the headlights readjusted to the proper settings.
- Have a qualified alignment center align the vehicle to the OEM specifications.
- After the first 100 miles, check all hardware for the proper torque & periodically thereafter.

<b><u>TORQUE SPECIFICATIONS</u></b>					
<b><u>INCH SYSTEM</u></b>			<b><u>METRIC SYSTEM</u></b>		
<b>Bolt Size</b>	<b>Grade 5</b>	<b>Grade 8</b>	<b>Bolt Size</b>	<b>Class 8.8</b>	<b>Class 10.9</b>
5/16	15 FT LB	20 FT LB	6MM	5 FT LB	9 FT LB
3/8	30 FT LB	35 FT LB	8MM	18 FT LB	23 FT LB
7/16	45 FT LB	60 FT LB	10MM	32 FT LB	45 FT LB
1/2	65 FT LB	90 FT LB	12MM	55 FT LB	75 FT LB
9/16	95 FT LB	130 FTLB	14MM	85 FT LB	120 FT LB
5/8	135 FT LB	175 FT LB	16MM	130 FT LB	165 FT LB
3/4	185 FT LB	280 FT LB	18MM	170 FT LB	240 FT LB

- The above specifications are not to be used when the bolt is being installed with a bushing.

**Seat Belts Save Lives, Please Wear Your Seat Belt!**