



07-08 Jeep Wrangler JK Rear Track Bar Brace Installation Instructions

www.skyjacker.com

REQUIRED TOOL LIST:

- Safety Glasses
- Metric / Standard Wrenches & Sockets
- Torque Wrench



Kit Box Breakdown:

Part #: JKBRC15

ITEM#	DESCRIPTION	QTY
JKBRC15-B	JK REAR TRK BAR BRACE D44	1
HB-JKBRC15	HARDWARE BAG FOR JKBRC15	1
I-JKBRC15	INST SHEET:JK D44 TRK BRACE	1

Hardware Bag Breakdown:

HB-JKBRC15 HARDWARE BAG FOR JKBRC15

ITEM#	DESCRIPTION	QTY
516X1CTB	5/16 X 1 CRS THREAD BOLT	3
516XTFW	5/16" EXTRA THICK FLAT WASH	3
516LW	5/16" GRADE 8 LOCK WASHER	3

NOTE:

Skyjacker's rear track bar brace for the Jeep JK was designed to help strengthen the rear track bar assembly. The factory welds on the rear lower track bar bracket can fail in some situations. The Skyjacker brace should be installed to avoid this situation. This bracket is designed to fit the more common Dana 44 rear end. If you have the Dana 35 rear end, it is recommended to have a certified welder reinforce the factory welds on the factory rear track bar bracket at the axle.

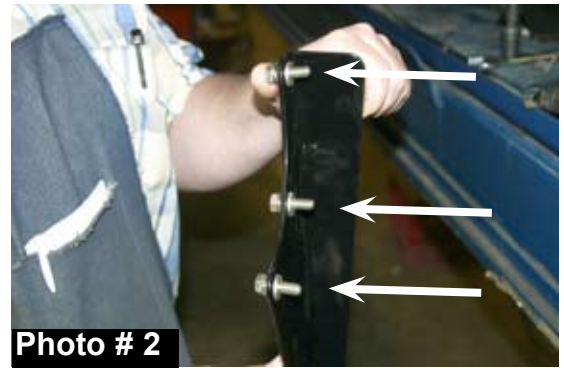
INSTALLATION:

1. Park the vehicle on level ground & chock the front & rear tires.
2. Disconnect the rear track bar from the axle. If needed, attach a ratchet strap between the frame & the differential to take the load off of the track bar bolt.
3. Remove the three upper left differential cover bolts.
(See Photo # 1)

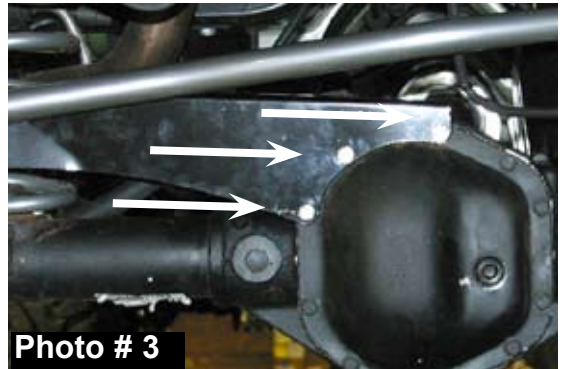


Photo # 1

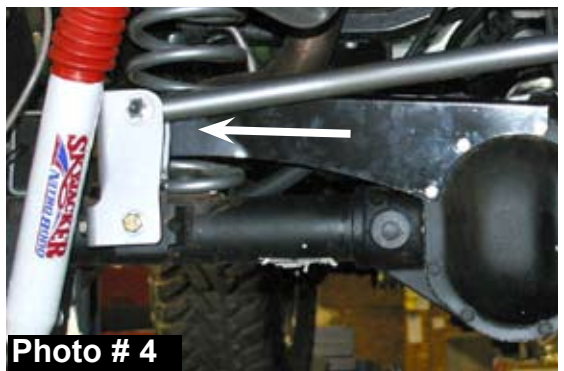
4. Attach the new track bar brace to the differential using the 5/16 x 1" coarse thread bolts. **Do not tighten at this time.** The end of the bracket should be between the Skyjacker track bar bracket & the coil spring. Use the thick, gold plated 5/16" washer between the bracket & the differential cover. Use a 5/16" lock washer under the head of each bolt. (See Photo # 2 & # 3) **Do not tighten at this time.**



5. Attach the brace to the front side of the Skyjacker track bar bracket between the bracket & the coil spring. **Do not tighten at this time.** (See Photo # 4)



6. Torque the 5/16" bolts at the differential & the 14mm bolt on the track bar to OEM specifications.



TORQUE SPECIFICATIONS

<u>INCH SYSTEM</u>			<u>METRIC SYSTEM</u>		
Bolt Size	Grade 5	Grade 8	Bolt Size	Class 8.8	Class 10.9
5/16	15 FT LB	20 FT LB	6MM	5 FT LB	9 FT LB
3/8	30 FT LB	35 FT LB	8MM	18 FT LB	23 FT LB
7/16	45 FT LB	60 FT LB	10MM	32 FT LB	45 FT LB
1/2	65 FT LB	90 FT LB	12MM	55 FT LB	75 FT LB
9/16	95 FT LB	130 FTLB	14MM	85 FT LB	120 FT LB
5/8	135 FT LB	175 FT LB	16MM	130 FT LB	165 FT LB
3/4	185 FT LB	280 FT LB	18MM	170 FT LB	240 FT LB

• The above specifications are not to be used when the bolt is being installed with a bushing.

Seat Belts Save Lives, Please Wear Your Seat Belt.