



www.skyjacker.com

2018 Jeep Wrangler JL 2"- 4" Standard Lower Links Installation Instructions



REQUIRED TOOL LIST:

- Safety Glasses
- Metric / Standard Wrenches & Sockets
- Torque Wrench

Before beginning the installation, read these instructions & the enclosed driver's WARNING NOTICE thoroughly & completely. Also affix the WARNING decal in the passenger compartment in clear view of all occupants. Please refer to the Parts List to insure that all parts & hardware are received prior to disassembly of the vehicle. If any parts are found to be missing, contact SKYJACKER® Customer Service at 318-388-0816 to obtain the needed items. If you have any questions or reservations about installing this product, contact SKYJACKER® Technical Assistance at 318-388-0816.

Important Notes:

- After installation, a qualified alignment facility is required to align the vehicle to the OEM specifications.

Component Box Breakdown:

Part #: JL24LL

Item #	Description	Qty	Item #	Description	Qty
JL24LLFD-L	JL LOWER FRONT DRV LINK	1	HB-JL24LLF	HDWR BAG: JL24LLF	1
JL24LLFP-L	JL LOWER FRONT PAS LINK	1	I-JL24LL	INSTRUCTION SHEET: JL24LL	1
JL24LLR-L	JL LOWER REAR LINK	2			

Hardware Bag Breakdown:

Part # HB-JL24LLF

Item #	Description	Qty	Item #	Description	Qty
14X1FTB	1/4 X 1 FINE THREAD BOLT	2	14FTN	1/4 FINE THREAD LOCK NUT	2
14SAEW	1/4 SAE WASHER	4			

Installation:

1. With the vehicle on flat level ground, set the emergency brake, & block the front & rear tires / wheels.
2. Disconnect the OEM front brake line brackets from the OEM front lower control arms using a 15mm socket / wrench. (See Photo # 1)
3. One at a time, remove the OEM front lower control arms & install the new Skyjacker front lower control arms using the OEM hardware, a 21mm socket / wrench, & 24mm socket / wrench. **Note:** Install the new front lower control arms with the offset bend toward the inside of the vehicle.
4. Connect the OEM front brake line brackets to the new Skyjacker front lower control arms using the supplied 1/4" x 1" bolts, 1/4" washers, 1/4" nuts, & a 7/16" socket / wrench. (See Photo # 2)
5. One at a time, remove the OEM rear lower control arms & install the new Skyjacker rear lower control arms using the OEM hardware, & a 21mm socket / wrench. **Note:** Install the new rear lower control arms with the offset bend toward the inside of the vehicle.



Photo # 1

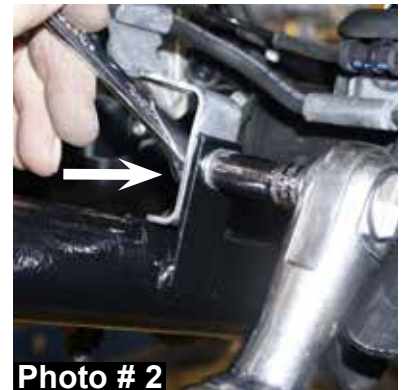


Photo # 2

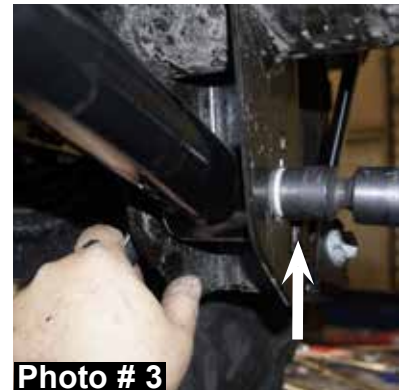


Photo # 3

Final Notes:

- After the installation is complete, double check that all nuts & bolts are tight. Refer to the following chart for the proper torque specifications. (Do not retighten the nuts & bolts where thread lock compound was used.)
- Have a qualified alignment center align the vehicle to the OEM specifications.
- After the first 100 miles, check all hardware for the proper torque & periodically thereafter.

<u>TORQUE SPECIFICATIONS</u>					
<u>INCH SYSTEM</u>			<u>METRIC SYSTEM</u>		
Bolt Size	Grade 5	Grade 8	Bolt Size	Class 8.8	Class 10.9
5/16	15 FT LB	20 FT LB	6MM	5 FT LB	9 FT LB
3/8	30 FT LB	35 FT LB	8MM	18 FT LB	23 FT LB
7/16	45 FT LB	60 FT LB	10MM	32 FT LB	45 FT LB
1/2	65 FT LB	90 FT LB	12MM	55 FT LB	75 FT LB
9/16	95 FT LB	130 FT LB	14MM	85 FT LB	120 FT LB
5/8	135 FT LB	175 FT LB	16MM	130 FT LB	165 FT LB
3/4	185 FT LB	280 FT LB	18MM	170 FT LB	240 FT LB

- **The above specifications are not to be used when the bolt is being installed with a bushing.**