

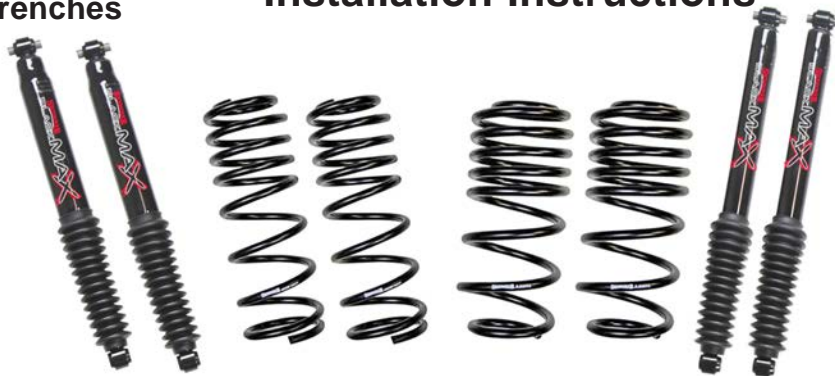


www.skyjacker.com

2018-2023 Jeep Wrangler JL 2-Door & 4-Door 4WD Non-Rubicon Models 2-2.5" Lowering Sport Coils with Black MAX Shocks Installation Instructions

Required Tools List:

- **Metric & Metric Hex Key Sockets \ Wrenches**
(6mm Hex Key & 8mm, 13mm, 15mm, 18mm, 21mm & 22mm)
- **Diagonal Cutting Pliers**
- **Pliers**
- **Safety Glasses**
- **Jack Stands**
- **Torque Wrench**
- **Measuring Tape**
- **Wheel Chock**
- **Floor Jack**



Before beginning installation, read these instructions & enclosed driver's WARNING NOTICE thoroughly & completely. Also affix WARNING decal in passenger compartment in clear view of all occupants. Please refer to Parts List to insure that all parts & hardware are received prior to disassembly of vehicle. If any parts are found to be missing, contact SKYJACKER® Customer Service at 318-388-0816 to obtain needed items. If you have any questions or reservations about installing this product, contact SKYJACKER® Technical Assistance at 318-388-0816.

Please Record the Important Measurement Information Below for Reference.

It is very helpful on determining an Accurate Achieved Lift Height Measurement.

Make sure you park vehicle on a level concrete or asphalt surface. Many times a vehicle is not level (side-to-side) from factory, but is usually not noticed until a lift kit has been installed which makes difference more visible. Using a measuring tape, measure front & rear (both sides) from ground up to center of fender opening above axle.

Driver Side Front: _____ / _____
BEFORE / AFTER

Passenger Side Front: _____ / _____
BEFORE / AFTER

Driver Side Rear: _____ / _____
BEFORE / AFTER

Passenger Side Rear: _____ / _____
BEFORE / AFTER

Important Notes:

- This Suspension Lowering Kit is Designed to Fit Jeep Wrangler Sport \ Sahara Models ONLY.
- This Suspension Lowering Kit is NOT Designed to Fit the Following Models:
 - Any Jeep Wrangler 392 Models.
 - Any Jeep Wrangler Rubicon Models.
 - Any Jeep Wrangler 4xe Models.
 - Any Jeep Wrangler Willys Models.
 - Any Diesel Engine Models.
- The Drag Link Must Be Adjusted to Center the Steering Wheel Before the Vehicle Is Driven. Failure to Do So Will Cause Computer Errors, Odd Handling Characteristics, & Poor Performance.
- If Larger Tires (10% More Than the OEM Diameter) Are Installed, Speedometer Recalibration Will Be Necessary. Contact Your Local JEEP Dealer or an Authorized Skyjacker® Dealer for Details.
- After Installation, a Qualified Alignment Facility Is Required to Align the Vehicle to the OEM Specifications.

Kit Breakdown:

Part # LOWJL025PB

| Item # | Description | Qty |
|--------------|----------------------------|-----|
| 4X4 JKF DROP | COIL SPRING, LOWJACKER FRT | 2 |
| JL025RS | COIL SPRING, LOWJACKER RR | 2 |
| B8383 | BLACK MAX WITH BLACK BOOT | 2 |
| B8384 | BLACK MAX WITH BLACK BOOT | 2 |

Pre-Installation Tips: Install Shock Boots.

1. Install supplied Shock Boot over Skyjacker Shock. Attach boot to cylinder body with supplied Boot Cable Tie. Remove excess cable tie with diagonal cutting pliers.

Front Installation: **Note:** Save all factory components and hardware for reuse, unless noted.

1. With vehicle on flat level ground, set emergency brake & chock rear tires\wheels.
2. Raise front of vehicle, support frame rails using jack stands at indicated lift points in OEM service manual.
3. Remove the front tires\wheels using a 22mm socket.
4. Remove OEM front skid plate using a 13mm socket\wrench. (See Photo # 1)
5. Remove OEM front sway bar end links using a 6mm hex key socket\wrench & 18mm socket\wrench. (See Photo # 2)
6. Disconnect OEM front track bar from frame mount using a 21mm socket\wrench. (See Photo # 3)

Photo # 1

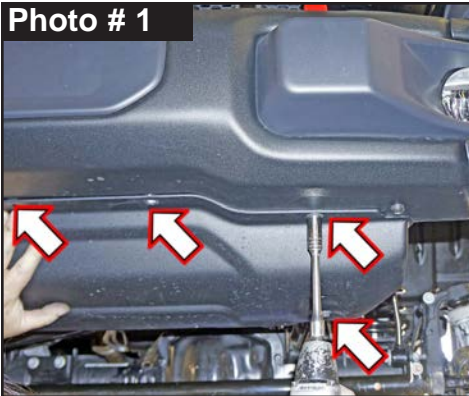


Photo # 2

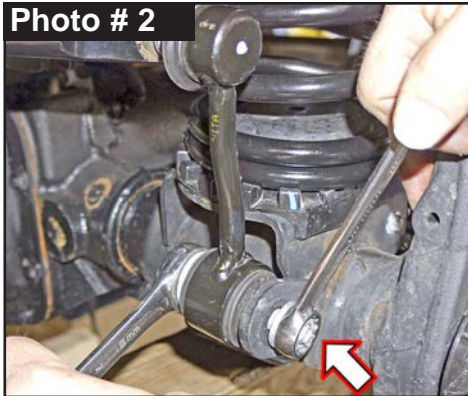
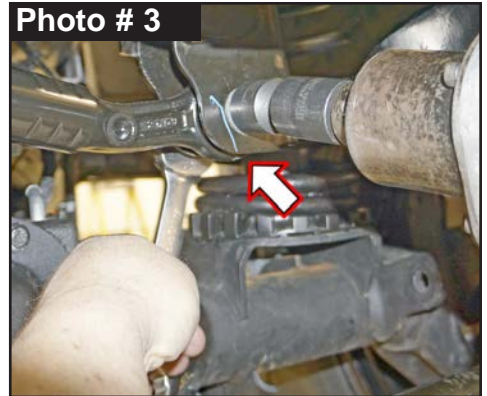


Photo # 3



7. Disconnect OEM drag link from OEM pitman arm using a 21mm socket\wrench. (See Photo # 4)
8. Disconnect OEM front shock from upper shock tower mount & lower axle mount using a 18mm socket\wrench. (See Photo # 5)

Photo # 4

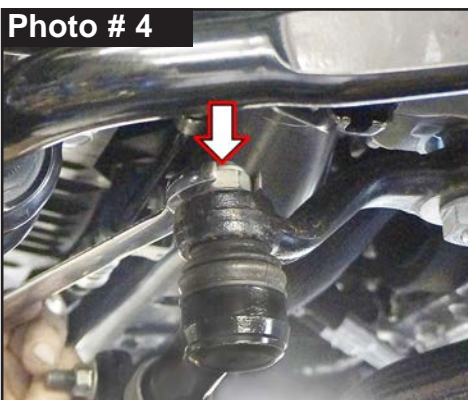


Photo # 5



9. Disconnect OEM front brake line brackets from OEM front lower control arms using a 15mm socket \ wrench. (See Photo # 6)
10. Mark the location of OEM front driveshaft \ flange at axle & disconnect using a 15mm socket \ wrench. (See Photo # 7)
11. Disconnect wiring harness from passenger side OEM front upper control arm using pliers.
12. Disconnect wiring harness from OEM 4WD actuator. (See Photo # 8)

Photo # 6

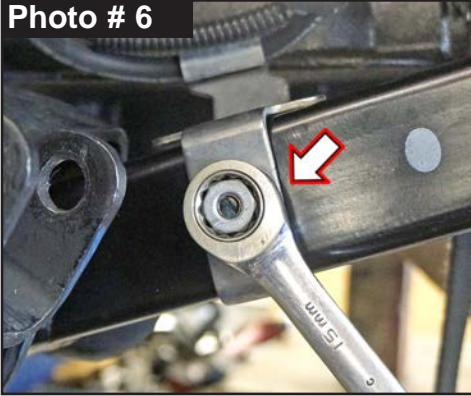
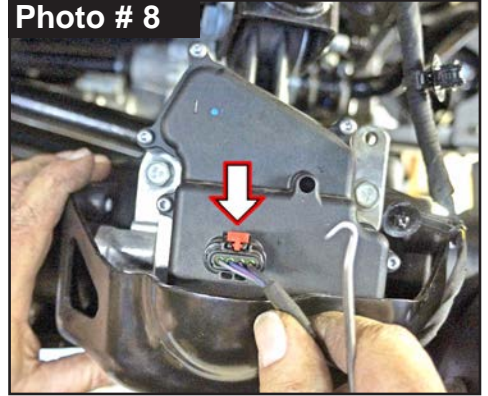


Photo # 7



Photo # 8

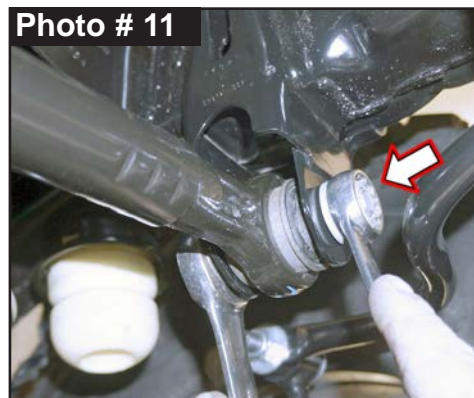
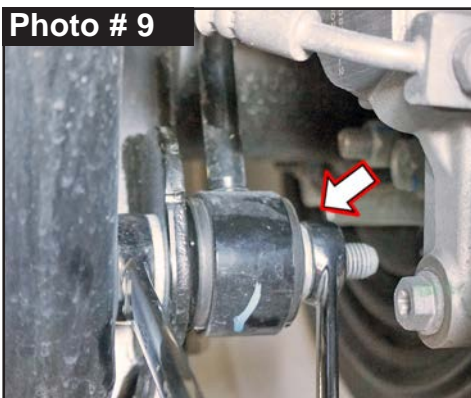


13. Disconnect OEM vent hose from front differential using pliers.
14. While checking for appropriate slack in ABS lines, brake lines, differential vent hose & etc. Lower front differential & remove OEM front coil springs.
15. Insert 4X4 JKF DROP Coil Spring into upper tower first. Be sure that the coil is indexed to seat properly, then raise the axle enough to hold the coil springs in place.
Tech Note: If the front axle cannot be lowered enough to allow the coil spring to be installed, carefully rotate the pinion up to provide more clearance for the coil installation.
16. Raise front axle in order to load Skyjacker front coil springs.
17. Connect OEM driveshaft with OEM hardware using a 15mm socket \ wrench. (See Photo # 7)
18. Connect OEM drag link to OEM pitman arm with OEM hardware using a 21mm socket \ wrench. (See Photo # 4) Torque 77 ft-lbs.
19. Connect OEM vent hose to front differential using pliers.
20. Connect wiring harness to OEM 4WD actuator. (See Photo # 8)
21. Connect wiring harness to passenger side OEM front upper control arm.
22. Connect OEM front brake line bracket to OEM front lower control arm with OEM hardware using a 15mm socket \ wrench. (See Photo # 6)
23. **Tech Note:** Black MAX Shock are to be mounted with cylinder body up & shaft down.
Install Skyjacker # B8383 Black MAX Shock with OEM hardware at upper shock tower mount using a 18mm socket \ wrench. **Note:** Upper shock mount has a OEM fixed nut welded onto the frame. Be careful not to dislodge nor over tighten this nut.
Connect Black MAX Shock at lower axle mount with OEM hardware using a 18mm socket \ wrench. Secure, but **Do Not Completely Tighten**. These will be tightened once vehicle is on ground with full vehicle weight on tires \ wheels.

24. Connect OEM front sway bar end links using a 6mm hex key socket \ wrench & 18mm socket \ wrench. (See Photo # 2)
25. Install OEM front skid plate with OEM hardware using a 13mm socket \ wrench. (See Photo # 1)
26. Install front tires \ wheels using a 22mm socket Lower vehicle to ground. Torque lugs to OEM service manual specifications.
27. Connect OEM front track bar to frame mount using a 21mm socket \ wrench. (See Photo # 3)
Tech Note: It may be necessary to turn steering wheel to align track bar bolt.

Rear Installation: **Note:** Save all factory components and hardware for reuse, unless noted.

1. Chock front tires \ wheels. Raise rear of vehicle & support frame rails using jack stands at indicated lift points in OEM service manual.
2. Remove rear tires \ wheels using a 22mm socket.
3. Disconnect OEM rear sway bar end link from lower differential mount using an 18mm socket \ wrench. (See Photo # 9)
4. Disconnect OEM rear brake line brackets from rear axle at upper control arm mount using a 13mm socket \ wrench. (See Photo #10)
5. Disconnect OEM rear track bar from passenger side upper frame mount using a 21mm socket \ wrench. (See Photo # 11)



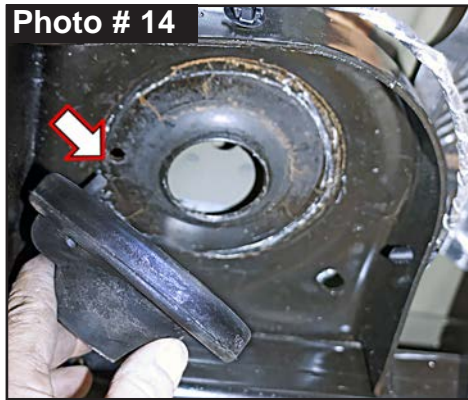
6. Disconnect OEM rear shock from lower axle mount using a 18mm socket \ wrench. (See Photo # 12)
 Disconnect OEM rear shock from upper shock tower mount using a 18mm socket \ wrench. **Note:** OEM upper shock mount has nut attached to shock mount.



Tech Note: In order to gain access to OEM rear upper shock mounting bolts, remove three (3) OEM bolts rear bumper inner fender liner using a 8mm socket \ wrench. (See Photo # 13) Retain hardware.

7. While checking for appropriate slack in ABS lines, brake lines, differential vent hose & etc, lower rear axle & remove OEM rear coil springs.

8. **Note:** Be sure that tab of each OEM rear upper coil spring isolator are aligned with hole of OEM rear upper coil spring mount. (See Photo # 14)



Install Skyjacker # JL025RS Coil Springs.
(See Photo # 15)

Raise the rear differential in order to load the Skyjacker rear coil springs.

9. **Tech Note:** Black MAX Shock are to be mounted with cylinder body up & shaft down.
Install Skyjacker # B8384 Black MAX Shock with OEM hardware at upper shock tower mount using a 18mm socket \wrench. Torque 81 ft-lbs.
Attach OEM rear bumper inner fender liner with OEM bolts using a 8mm socket \wrench. (See Photo # 13)
Install Black MAX Shock with OEM hardware at lower shock mount using a 18mm socket \wrench. Secure, but **Do Not Completely Tighten**.
10. Connect OEM rear brake line brackets to rear differential with OEM hardware using a 13mm socket / wrench. (See Photo # 10)
11. Connect OEM rear sway bar end link to differential mount using an 18mm socket \wrench. (See Photo # 9) Secure, but **Do Not Completely Tighten**.
12. Install rear tires \wheels using a 22mm socket. Lower vehicle to ground. Torque lugs to OEM service manual specifications.
13. Connect OEM rear track bar to passenger side upper frame mount using a 21mm socket \wrench. (See Photo # 11) **Tech Note:** It may be necessary to raise \lower axle to align track bar bolt.

Final Clearance Check & Torque Steps:

1. Start vehicle. Make sure there are no dash lights pertaining to suspension.
2. Jounce vehicle a couple of times. This will help suspension settle to new ride height. Cycle steering lock-to-lock & check all components for proper operation & clearances. Pay special attention to clearance between tires \wheels and Black MAX Shocks, control arms, brake hoses, ABS wiring, etc.
3. Front Tighten & Torque Sequence.
OEM rear track bar at frame mount using a 21mm socket \wrench. Torque 52 ft-lbs + 115°
Front shock absorber upper mount using a 18mm wrench. Torque 81 ft-lbs.
Front shock absorber lower mount using a 18mm wrench. Torque 74 ft-lbs.
OEM front sway bar end links using a 6mm hex key socket \wrench & 18mm socket \wrench.
Upper Nut Torque 69 ft-lbs. Lower Bolt Torque 59 ft-lbs.

4. Rear Tighten & Torque Sequence.
 OEM track bar at upper frame mount using a 21mm socket\wrench. Torque 74 ft-lbs + 30°
 Rear shock absorber lower mount using a 18mm socket\wrench. Torque 74 ft-lbs.
 OEM sway bar end link at lower differential mount using an 18mm socket\wrench. Torque 59 ft-lbs.

Final Notes:

- After installation is complete, double check that all nuts & bolts are tight. Refer to the following chart for proper torque specifications. (**Note:** Do not re-tighten nuts & bolts where thread lock compound was used.)
- With vehicle placed on ground, cycle steering lock to lock & inspect steering, suspension, brake lines, front & rear drivelines, fuel lines & wiring harnesses for proper operation, tightness & adequate clearance.
- Have headlights readjusted to proper settings.
- Have a qualified alignment center align vehicle to OEM specifications.
- After first 100 miles, check all hardware for proper torque & periodically thereafter.

| TORQUE SPECIFICATIONS | | | | | |
|---|------------|------------|---------------|------------|------------|
| INCH SYSTEM | | | METRIC SYSTEM | | |
| Bolt Size | Grade 5 | Grade 8 | Bolt Size | Class 8.8 | Class 10.9 |
| 5/16 | 180 in-lbs | 240 in-lbs | 6MM | 60 in-lbs | 108 in-lbs |
| 3/8 | 30 ft-lbs | 35 ft-lbs | 8MM | 216 in-lbs | 23 ft-lbs |
| 7/16 | 45 ft-lbs | 60 ft-lbs | 10MM | 32 ft-lbs | 45 ft-lbs |
| 1/2 | 65 ft-lbs | 90 ft-lbs | 12MM | 55 ft-lbs | 75 ft-lbs |
| 9/16 | 95 ft-lbs | 130 ft-lbs | 14MM | 85 ft-lbs | 120 ft-lbs |
| 5/8 | 135 ft-lbs | 175 ft-lbs | 16MM | 130 ft-lbs | 165 ft-lbs |
| 3/4 | 185 ft-lbs | 280 ft-lbs | 18MM | 170 ft-lbs | 240 ft-lbs |
| The Above Specifications Are Not to Be Used When the Bolt Is Being Installed With a Bushing. | | | | | |

Seat Belts Save Lives, Please Wear Your Seat Belt.

Optional HD OEM Replacement Steering Stabilizers Available:

- 7008 HD OEM Replacement Steering Stabilizer | White Steering Damper
- 8008 HD OEM Replacement Steering Stabilizer | Black Steering Damper
- 9008 HD OEM Replacement Steering Stabilizer | Silver Steering Damper