



www.skyjacker.com

2012 - 2018 Ram 1500 4WD
2019 Ram 1500 Classic 4WD
3" Suspension Lift
Installation Instructions

REQUIRED TOOL LIST:

- Safety Glasses
- Metric / Standard Wrenches & Sockets
- Grease Gun
- Floor Jack
- Jack Stands
- Measuring Tape
- Strut Spring Compressor
- Torque Wrench



Before beginning the installation, thoroughly & completely read these instructions & the enclosed driver's WARNING NOTICE. Affix the WARNING decal in the passenger compartment in clear view of all occupants. Please refer to the Parts List to insure that all parts & hardware are received prior to the disassembly of the vehicle. If any parts or hardware are found to be missing, contact SKYJACKER® Customer Service at 318-388-0816 to obtain the needed items. If you have any questions or reservations about installing this product, contact SKYJACKER® Technical Assistance at 318-388-0816.

Make sure you park the vehicle on a level concrete or asphalt surface. Many times a vehicle is not level (side-to-side) from the factory & is usually not noticed until a lift kit has been installed, which makes the difference more visible. Using a measuring tape, measure the front & rear (both sides) from the ground up to the center of the fender opening above the axle. Record this information below for future reference.

Driver Side Front: _____ Passenger Side Front: _____

Driver Side Rear: _____ Passenger Side Rear: _____

Important Notes:

- This suspension lift is **not** designed to be used on models with a TRX Package.
- If larger tires (10% more than the OEM diameter) are installed, speedometer recalibration will be necessary. Contact your local Ram dealer or an authorized dealer for details.
- After installation, a qualified alignment facility is required to align the vehicle to the OEM specifications.

Component Box Breakdown:

Part #: R1230PB / R1230PH / R1230PM / R1230PN

Item #	Description	Qty	Item #	Description	Qty
R123UCA-L	RAM 1500 DRV UPPER A-ARM	1	H7030	HYDRO SHOCK W/RED BOOT	2
R123UCA-R	RAM 1500 PAS UPPER A-ARM	1		(Included With R1230PH)	
R123MS-1	RAM 1500 FRT UPPER SPACER	2	M9530	MONOTUBE SHOCK	2
R123MS-2	RAM 1500 FRT LOWER SPACER	2		(Included With R1230PM)	
R123RMS-S	RAM 1500 REAR SPACER	2	N8030	NITRO SHOCK W/RED BOOT	2
BTIE-K	BLACK CABLE TIE	2		(Included With R1230PN)	
HB-10MM/NFN	HDWR BAG: 10MM FLG NUTS	1	I-R1230P	INST SHEET: R1230P	1
HB-R123RMS	HDWR BAG: REAR SPACERS	1			
B8530	BLACK MAX SHOCK W/BLK BOOT	2			
	(Included With R1230PB)				

Hardware Bag Breakdown:

Part # HB-10MM/NFN

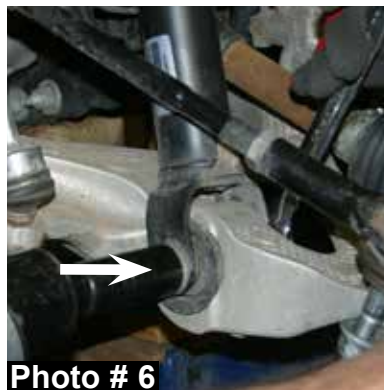
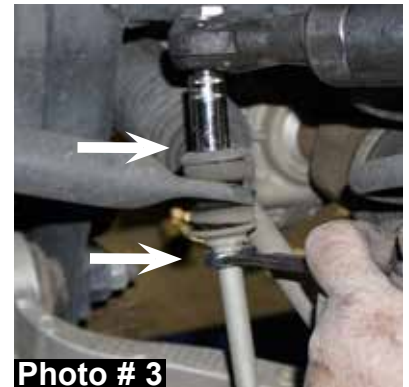
Item #	Description	Qty
10MMX1.5NFN	10MM X 1.5 NYL FLANGE NUT	6

Part # HB-R123RMS

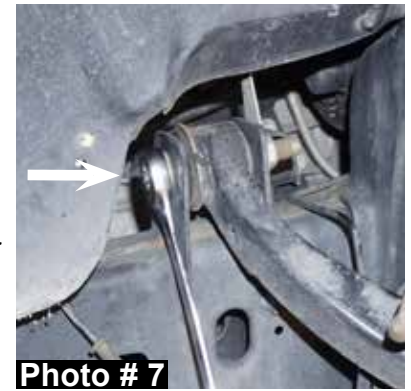
Item #	Description	Qty	Item #	Description	Qty
R123RMS-WASH	RAM 1500 REAR SPACER WASH	2	38SAEW	3/8 SAE WASHER	2
38X134CTB	3/8 X 1 3/4 COARSE THRD BOLT	2			

Front Installation:

1. With the vehicle on flat level ground, set the emergency brake, & block the rear tires / wheels.
2. Raise the front of the vehicle & support the frame of the vehicle securely using jack stands.
3. Remove the front tires / wheels using a 22mm socket. (See Photo # 1)
4. Disconnect the OEM outer tie rod ends from the OEM steering knuckles using a 21mm socket / wrench. (See Photo # 2) **Note:** It may be necessary to strike the OEM steering knuckles to dislodge the OEM tie rod ends. Be careful not to damage the OEM tie rod ends.
5. Disconnect the OEM ABS lines from the OEM upper A-arms.
6. Disconnect the OEM brake lines from the frame using a 13mm socket / wrench.
7. Disconnect the OEM sway bar end links from the OEM sway bar using a 15mm wrench & 16mm socket / wrench. (See Photo # 3)
8. While supporting the OEM steering knuckles, disconnect the OEM upper A-arms from the OEM steering knuckles using a 21mm socket / wrench. (See Photo # 4) **Note:** It may be necessary to strike the OEM steering knuckles to dislodge the OEM ball joints. Be careful not to damage the OEM ball joints.
9. Remove the OEM strut assemblies using a 15mm wrench, 21mm socket / wrench, & 24mm socket / wrench. (See Photos # 5 & # 6)

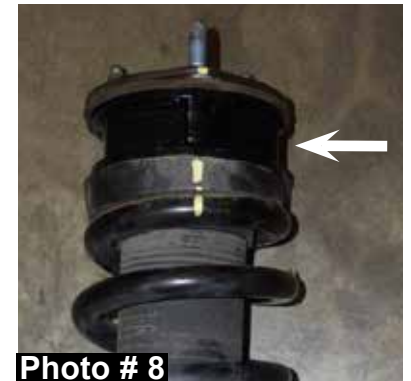


10. Remove the OEM upper A-arms using a 18mm socket / wrench.
(See Photo # 7)



11. For upper strut mount alignment purposes, mark the location of each OEM upper strut mount & OEM coil spring prior to disassembly. Using a strut spring compressor, compress the coil spring of each OEM strut assembly. Remove each upper strut retaining nut & upper strut mount using a 18mm socket.

12. Install the new Skyjacker lower strut spacers on top of each OEM coil spring isolator pad. (See Photo # 8)



13. Install the OEM upper strut mounts, aligning the marks made in Step # 11 using a 18mm socket & uncompress the OEM coil spring of each OEM strut assembly.

14. Install the new Skyjacker upper strut spacers on top of each OEM strut assembly using the OEM hardware & a 15mm socket. (See Photo # 9)



15. Install the new Skyjacker spacer / OEM strut assemblies using the supplied 10mm flange nuts, OEM lower hardware, a 15mm wrench, 21mm socket / wrench, & 24mm socket / wrench. (See Photos # 5 & # 6)

16. Install the new Skyjacker upper A-arms using the OEM hardware & a 18mm socket / wrench. Do not fully tighten at this time. (See Photo # 10)



17. While supporting the OEM steering knuckles, connect the new Skyjacker upper A-arms to the OEM steering knuckles & fully tighten all upper A-arm & ball joint hardware using the supplied cotter pins, washers, nuts, OEM hardware, a 18mm socket / wrench, & 22mm socket / wrench. (See Photo # 11)

18. Grease the new Skyjacker upper A-arm ball joints using a grease gun.

19. Connect the OEM sway bar end links to the OEM sway bar using a 15mm wrench & 16mm socket / wrench. (See Photo # 3)



20. Connect the OEM brake lines to the frame using a 13mm socket / wrench.

21. Connect the OEM ABS lines to the new Skyjacker upper A-arms using the supplied cable ties. (See Photo # 12)
22. Connect the OEM outer tie rod ends to the OEM steering knuckles using a 21mm socket / wrench. (See Photo # 2)
23. Install the front tires / wheels using a 22mm socket & lower the front of the vehicle to the ground. (See Photo # 1)



Photo # 12

Rear Installation:

1. Block the front tires / wheels, raise the rear of the vehicle, & support the frame of the vehicle securely using jack stands.
2. Remove the rear tires / wheels using a 22mm socket.
3. Support the rear differential & remove the OEM rear shocks using a 21mm socket / wrench. (See Photo # 13)
4. Disconnect the OEM rear sway bar end links from the frame using a 18mm socket / wrench. (See Photo # 14)
5. Disconnect the OEM rear brake lines from the frame using a 13mm socket / wrench.
6. Disconnect the OEM rear track bar from the rear differential using a 21mm socket / wrench. (See Photo # 15)
7. While checking for appropriate slack in ABS lines, brake lines, differential vent hose, & etc. Lower the rear differential & remove the OEM rear coil springs.
8. Install the new Skyjacker rear coil spring spacer washers on top of the OEM rear coil spring mounts. (See Photo # 16)
9. Install the new Skyjacker rear coil spring spacers using the supplied 3/8" x 1 3/4" bolts, washers, & a 9/16" socket. (See Photo # 17)

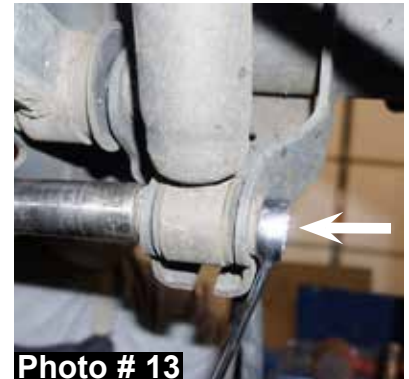


Photo # 13



Photo # 14



Photo # 15



Photo # 16



Photo # 17

10. Install the OEM rear coil spring isolators & OEM rear coil springs.
11. Raise the rear differential in order to load the OEM rear coil springs & connect the OEM rear track bar to the rear differential using a 21mm socket / wrench. (See Photo # 15)
12. Connect the OEM rear brake lines to the frame using a 13mm socket / wrench.
13. Connect the OEM rear sway bar end links to the frame using a 18mm socket / wrench. (See Photo # 14)
14. Install the new Skyjacker rear shocks using the OEM hardware & a 21mm socket / wrench.
15. Install the rear tires / wheels using a 22mm socket & lower the rear of the vehicle to the ground.

Final Notes:

- After the installation is complete, double check that all nuts & bolts are tight. Refer to the following chart for the proper torque specifications. (Do not retighten the nuts & bolts where thread lock compound was used.)
- With the vehicle placed on the ground, cycle the steering lock to lock & inspect the steering, suspension, brake lines, front & rear drivelines, fuel lines, & wiring harnesses for proper operation, tightness, & adequate clearance.
- Have the headlights readjusted to the proper settings.
- Have a qualified alignment center realign the vehicle to the OEM specifications.
- After the first 100 miles, check all hardware for the proper torque & periodically thereafter.

Seat Belts Save Lives, Please Wear Your Seat Belt.

<u>TORQUE SPECIFICATIONS</u>					
<u>INCH SYSTEM</u>			<u>METRIC SYSTEM</u>		
Bolt Size	Grade 5	Grade 8	Bolt Size	Class 8.8	Class 10.9
5/16	15 FT LB	20 FT LB	6MM	5 FT LB	9 FT LB
3/8	30 FT LB	35 FT LB	8MM	18 FT LB	23 FT LB
7/16	45 FT LB	60 FT LB	10MM	32 FT LB	45 FT LB
1/2	65 FT LB	90 FT LB	12MM	55 FT LB	75 FT LB
9/16	95 FT LB	130 FT LB	14MM	85 FT LB	120 FT LB
5/8	135 FT LB	175 FT LB	16MM	130 FT LB	165 FT LB
3/4	185 FT LB	280 FT LB	18MM	170 FT LB	240 FT LB

- **The above specifications are not to be used when the bolt is being installed with a bushing.**