



www.skyjacker.com

2003 - 2016 Toyota 4Runner
2007 - 2014 Toyota FJ Cruiser
2" Value Kit
Installation Instructions

REQUIRED TOOL LIST:

- Safety Glasses
• Metric / Standard Wrenches & Sockets
• Ball Joint remover
• Tie Rod Remover
• Floor Jack
• Jack Stands
• Measuring Tape
• Torque Wrench



Before beginning the installation, thoroughly & completely read these instructions & the enclosed driver's WARNING NOTICE. Affix the WARNING decal in the passenger compartment in clear view of all occupants. Please refer to the Parts List to insure that all parts & hardware are received prior to the disassembly of the vehicle. If any parts are found to be missing, contact SKYJACKER® Customer Service at 318-388-0816 to obtain the needed items. If you have any questions or reservations about installing this product, contact SKYJACKER® Technical Assistance at 318-388-0816.

Park the vehicle on a level concrete or asphalt surface. Many times a vehicle is not level (side-to-side) from the factory & is usually not noticed until a lift kit has been installed, which makes the difference more visible. Using a measuring tape, measure the front & rear (both sides) from the ground up to the center of the fender opening above the axle. Record this information below for future reference.

Driver Side Front: \_\_\_\_\_ Passenger Side Front: \_\_\_\_\_

Driver Side Rear: \_\_\_\_\_ Passenger Side Rear: \_\_\_\_\_

Important Notes:

- This lift kit is not designed nor will fit Toyota 4Runner models with X-REAS or KDSS packages.
• If larger tires (10% more than the OEM diameter) are installed, speedometer recalibration will be necessary. Contact your local Toyota dealer or an authorized dealer for details.
• After installation, a qualified alignment facility is required to align the vehicle to the OEM specifications.

## Component Box Breakdown:

### Part #: FJ20MS / T420MS

Item #	Description	Qty
TC520MS-S	4RUNNER / FJ FRONT SPACER	2
FJPS15	4RUNNER / FJ REAR SPACER	2

Item #	Description	Qty
HB-716X2DES	HDWR BAG: 7/16 X 2 STUDS	1
I-T420MS	INST SHEET: FJ20MS / T420MS	1

## Hardware Breakdown:

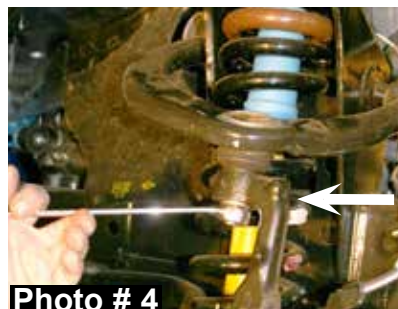
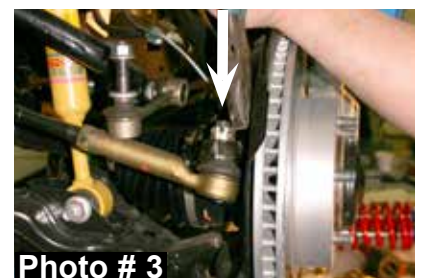
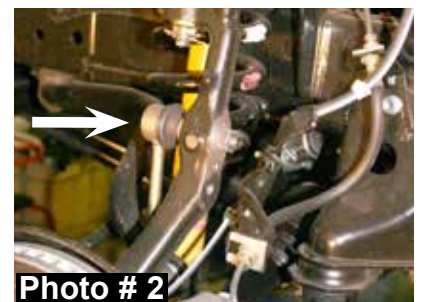
### Part # HB-716X2DES

Item #	Description	Qty
716X2DES	7/16 X 2 DOUBLE ENDED STUD	6
716SAEW	7/16 SAE WASHER	6

Item #	Description	Qty
716FTN	7/16 FINE THREAD LOCK NUT	6
LT100	NUTS N' BOLTS 427 1 ML TUBE	1

## Front Installation:

1. With the vehicle on flat level ground, set the emergency brake, & block the rear tires / wheels.
2. Raise the front of the vehicle & support the vehicle securely using jack stands.
3. Remove the front tires / wheels.
4. Remove the OEM ABS lines from the OEM upper A-arms & disconnect the OEM ABS / brake lines from the OEM steering knuckles. (See Photo # 1)
5. Disconnect the OEM sway bar end links from the OEM steering knuckles. (See Photo # 2)
6. Disconnect the OEM outer tie rods from the OEM steering knuckles using a tie rod remover or other suitable tool. (See Photo # 3)
7. Disconnect the lower strut mounts from the OEM lower A-arms.
8. Disconnect the OEM upper A-arms from the OEM steering knuckles using a ball joint remover or other suitable tool. (See Photo # 4)
9. Remove the upper strut mounting bolts from the OEM upper frame mounts & remove the OEM strut assemblies. (See Photo # 5)



10. Assemble the new Skyjacker front metal spacers using the supplied 7/16" x 2" double ended studs & thread locking compound. (See Photo # 6)
11. Install the new Skyjacker front metal spacers to the top of each OEM strut assembly using the OEM hardware. (See Photo # 7)
12. Connect the new strut assemblies to the OEM lower A-arms using the OEM hardware.
13. Connect the new strut assemblies to each upper frame mount using the supplied 7/16" fine thread nuts & washers. (See Photo # 8)
14. Connect the OEM upper A-arms to the OEM steering knuckles using the OEM hardware. **Note:** It may be necessary to use a pry bar to pull the OEM A-arms down enough to reattach.
15. Connect the OEM outer tie rods to the OEM steering knuckles using the OEM hardware.
16. Connect the OEM ABS / brake lines to the OEM upper A-arms using the OEM hardware. (See Photo # 9)
17. Connect the OEM sway bar end links to the OEM steering knuckles using the OEM hardware. (See Photo # 9)
18. Install the front tires / wheels & lower the front of the vehicle to the ground.

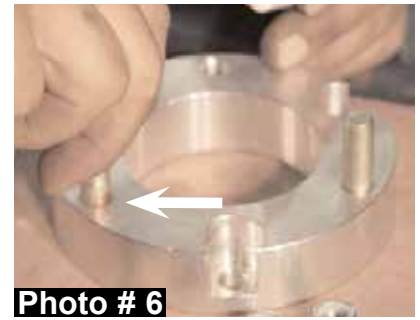


Photo # 6



Photo # 7

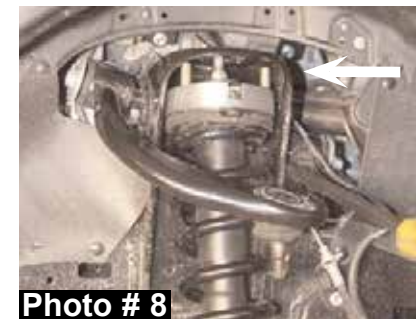


Photo # 8



Photo # 9

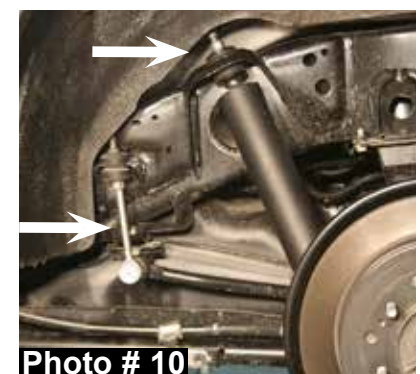


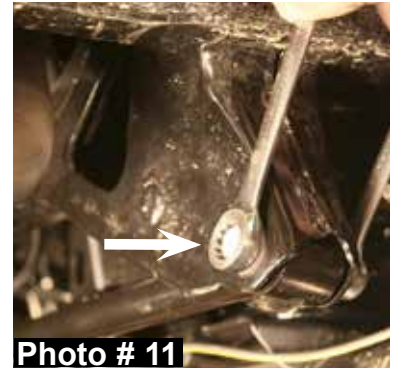
Photo # 10

## **Rear Installation:**

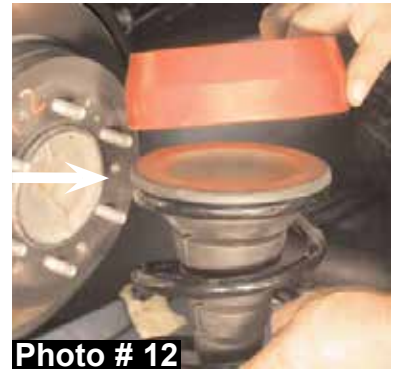
1. Block the front tires / wheels, raise the rear of the vehicle, & support securely using jack stands.
2. While supporting the rear differential, remove the rear tires / wheels.
3. Remove the OEM rear shocks. (See Photo # 10)
4. Disconnect the OEM rear sway bar end links from the OEM sway bar. (See Photo # 10)
5. Disconnect the OEM rear brake line brackets from the rear differential.



6. Disconnect the OEM rear track bar from the OEM frame bracket.  
(See Photo # 11)
7. Lower the rear differential & install the new Skyjacker rear coil spring spacers on top of each OEM rear coil spring isolator / bump stop.  
(See Photo # 12)
8. Raise the rear differential to the new rear coil spring / spacer assemblies & attach the OEM rear track bar to the OEM frame bracket.
9. Connect the OEM rear brake line brackets to the rear differential.
10. Connect the OEM rear sway bar end links to the OEM sway bar.
11. Install the new Skyjacker rear shocks using the OEM & supplied hardware. (See Photo # 13)
12. Install the rear tires / wheels & lower the rear of the vehicle to the ground.



**Photo # 11**



**Photo # 12**

**Final Notes:**

- After the installation is complete, double check that all nuts & bolts are tight. Refer to the following chart for the proper torque specifications. (Do not retighten the nuts & bolts where thread lock compound was used.)
- With the vehicle placed on the ground, cycle the steering lock to lock & inspect the steering, suspension, brake lines, front & rear drivelines, fuel lines, & wiring harnesses for proper operation, tightness, & adequate clearance.
- Have the headlights readjusted to the proper settings.
- Have a qualified alignment center align the vehicle to the OEM specifications.
- After the first 100 miles, check all of the hardware for the proper torque & periodically thereafter.



**Photo # 13**

## TORQUE SPECIFICATIONS

<u>INCH SYSTEM</u>			<u>METRIC SYSTEM</u>		
<b>Bolt Size</b>	<b>Grade 5</b>	<b>Grade 8</b>	<b>Bolt Size</b>	<b>Class 8.8</b>	<b>Class 10.9</b>
5/16	15 FT LB	20 FT LB	6MM	5 FT LB	9 FT LB
3/8	30 FT LB	35 FT LB	8MM	18 FT LB	23 FT LB
7/16	45 FT LB	60 FT LB	10MM	32 FT LB	45 FT LB
1/2	65 FT LB	90 FT LB	12MM	55 FT LB	75 FT LB
9/16	95 FT LB	130 FT LB	14MM	85 FT LB	120 FT LB
5/8	135 FT LB	175 FT LB	16MM	130 FT LB	165 FT LB
3/4	185 FT LB	280 FT LB	18MM	170 FT LB	240 FT LB

- The above specifications are not to be used when the bolt is being installed with a bushing.

**Seat Belts Save Lives, Please Wear Your Seat Belt.**



## *Jesus Christ Died For You.*

John 3:16

For God so loved the world that He gave His only Son, so that everyone who believes in Him should not perish, but have everlasting life.  
Romans 3:23

For all have sinned; all fall short of God's glorious standard.  
Ephesians 2:8

God saved you by his special favor when you believed. And you can't take credit for this; it is a gift from God.  
Psalms 18:2

The Lord is my Rock, my fortress, and my savior; my God is my Rock, in whom I find protection. He is my shield, the strength of my salvation, and my stronghold.  
Romans 10:9-10

That if you shall confess with thy mouth the Lord Jesus, and shall believe in your heart that God hath raised him from the dead, you shall be saved. For with the heart man believeth unto righteousness; and with the mouth confession is made unto salvation.

Pray This Simple Prayer:

God, I come to You admitting I have sinned against You and I need you to take control of my life. The Bible says anyone who calls on the name of the Lord will be saved. I am calling on You, Jesus. I ask that You come live in my heart and be the Lord over my life today. I do believe You died on the cross for me and came back to life to give me life! Thank You, Lord Jesus for a new life in You!

Now, go and tell somebody about your new life in Jesus, get a Bible, begin to read it, and go to a Bible believing church.

If you would like someone to pray with you, call Kenneth Copeland Ministries anytime at 800-600-7395.

To listen to commercial free Christian radio on the web, go to [www.887fm.org](http://www.887fm.org)

## *Jesús murió por ti.*

Juan 3:16

"Porque tanto amó Dios al mundo, que dio a su Hijo unigénito, para que todo el que cree en él no se pierda, sino que tenga vida eterna."  
Romanos 3:23

"Pues todos han pecado y están privados de la gloria de Dios."  
Efesios 2:8

"Porque por gracia ustedes han sido salvados mediante la fe; esto no procede de ustedes, sino que es el regalo de Dios."  
Salmos 18:2

"El Señor es mi roca, mi amparo, mi libertador; es mi Dios, el peñasco en que me refugio. Es mi escudo, el poder que me salva, ¡mi más alto escondite!"  
Romanos 10:9-10

"9 Que si confi esas con tu boca que Jesús es el Señor, y crees en tu corazón que Dios lo levantó de entre los muertos, serás salvo. 10 Porque con el corazón se cree para ser justificado, pero con la boca se confiesa para ser salvo."

Ahora di esta simple oración:

Dios, vengo a Ti y admito que he pecado contra Ti, necesito que tomes el control de mi vida. La Biblia dice que todo aquel que invoca el nombre del Señor escapará con vida. En este momento yo clamo ante Ti, Jesús; te pido que vengas a vivir en mi corazón y que tomes el control de mi vida. ¡Yo creo que tu moriste en la cruz y resucitaste para darme vida! ¡Gracias Señor Jesús, por una nueva vida que tengo en Ti! Amen.

Ahora ve y dile a alguien sobre la nueva vida que tienes en Cristo. Compra una Biblia y empieza a leerla. Busca una Iglesia que cree en la Biblia y hazte parte de esa Iglesia.

Si te gustaría orar con alguien, puedes llamar a este número 800-600-7395

Puedes ir a este sitio de Internet para escuchar música Cristiana sin anuncios, [www.887fm.org](http://www.887fm.org)

**Check out our favorite ministries at:**  
[www.inministries.org](http://www.inministries.org)  
[www.familychurch.org](http://www.familychurch.org)  
[www.kcm.org](http://www.kcm.org)

