



1997-2006 Jeep Wrangler TJ  
1984-2001 Cherokee XJ  
1986-1992 Comanche MJ  
1993-1998 Grand Cherokee ZJ

## Front Adjustable Track Bar Installation Instructions

### Required Tools List:

- SAE Hex Key & SAE Sockets \ Wrenches
- Metric Sockets \ Wrenches
- Star-Shaped T55 Torx Head Bit
- Pipe Wrench
- Safety Glasses
- Wheel Chock
- Floor Jack
- Jack Stands
- Torque Wrench
- Measuring Tape



Before beginning installation, read these instructions thoroughly & completely. Please refer to Parts List to insure that all parts & hardware are received prior to disassembly of vehicle. If any parts are found to be missing, contact SKYJACKER® Customer Service at 318-388-0816 to obtain needed items. If you have any questions or reservations about installing this product, contact SKYJACKER® Technical Assistance at 318-388-0816.

### Component Box Breakdown:

#### Part # TBA10

Item #	Description	Qty
TBA10-B	TRACK BAR, FRONT	1
RE34X34R	ROD END, 3/4 R-H THREAD	1
34RFTJN	JAM NUT, 3/4 R-H THREAD	1
7400WS	STEERING DAMPER, WHITE	1
BTIE	BOOT CABLE TIE, RED	1
B10RS	BOOT STABILIZER, RED	1
HSS	DECAL, HYDRO STABILIZER	1
HB-TBA60	HDWR BAG: TBA10	1

#### Part # TBA10B

Item #	Description	Qty
TBA10-B	TRACK BAR, FRONT	1
RE34X34R	ROD END, 3/4 R-H THREAD	1
34RFTJN	JAM NUT, 3/4 R-H THREAD	1
8400BS	STEERING DAMPER, BLACK	1
BTIE-K	BOOT CABLE TIE, BLACK	1
B10KS	STABILIZER BOOT, BLACK	1
MXSD	DECAL, BLACK MAX STABILIZER	1
HB-TBA60	HDWR BAG: TBA10	1

### Component Box Breakdown:

#### Part # TBA10M

Item #	Description	Qty
TBA10-B	TRACK BAR, FRONT	1
RE34X34R	ROD END, 3/4 R-H THREAD	1
34RFTJN	JAM NUT, 3/4 R-H THREAD	1
9400WS	STEERING DAMPER, SILVER	1
BTIE-K	BOOT CABLE TIE, BLACK	1
B10KS	STABILIZER BOOT, BLACK	1
SSD	DECAL, SILVER STABILIZER	1
HB-TBA60	HDWR BAG: TBA10	1

### Hardware Box Breakdown:

#### Part # HB-TBA60

Item #	Description	Qty
TJDLB	DRAG LINK BUSHING, 1.125	2
12X212FSB	1/2 X 2-1/2 FLAT SOCKET BOLT	1
12X312FTB	1/2 X 3-1/2 FINE THREAD BOLT	1
12USSW	1/2 USS WASHER	1
12SAEW	1/2 SAE WASHER	1
12STVFTN	1/2 STOVER LOCK NUT, FINE	1
2888	TRACK BAR BUSHING, JEEP	2
142121	ES24 SLEEVE, 1.38 LONG	1
81004	TAPERED SLEEVE, 1/2 I.D.	1
LT100	NUTS N' BOLTS 427 1 ML TUBE	1
HOURGLASS 5/8	BUSHING, HOURGLASS 5/8	2
P837	STABILIZER TAPERED STUD	1
140629	EB6 STUD, BAG# 141397	1
7146-B	TRACK BAR \ STABILIZER BRKT	1
12STVCTN	1/2 STOVER LOCK NUT, COARSE	1

**Component Box Breakdown:****Part # TBA60**

Item #	Description	Qty
TBA60-B	TRACK BAR, FRONT	1
RE34X34R	ROD END, 3/4 R-H THREAD	1
34RFTJN	JAM NUT, 3/4 R-H THREAD	1
7400WS	STEERING DAMPER, WHITE	1
BTIE	BOOT CABLE TIE, RED	1
B10RS	BOOT STABILIZER, RED	1
HSS	DECAL, HYDRO STABILIZER	1
HB-TBA60	HDWR BAG: TBA60	1

**Part # TBA60B**

Item #	Description	Qty
TBA60-B	TRACK BAR, FRONT	1
RE34X34R	ROD END, 3/4 R-H THREAD	1
34RFTJN	JAM NUT, 3/4 R-H THREAD	1
8400BS	STEERING DAMPER, BLACK	1
BTIE-K	BOOT CABLE TIE, BLACK	1
B10KS	STABILIZER BOOT, BLACK	1
MXSD	DECAL, BLACK MAX STABILIZER	1
HB-TBA60	HDWR BAG: TBA60	1

**Part # TBA60M**

Item #	Description	Qty
TBA60-B	TRACK BAR, FRONT	1
RE34X34R	ROD END, 3/4 R-H THREAD	1
34RFTJN	JAM NUT, 3/4 R-H THREAD	1
9400WS	STEERING DAMPER, SILVER	1
BTIE-K	BOOT CABLE TIE, BLACK	1
B10KS	STABILIZER BOOT, BLACK	1
SSD	DECAL, SILVER STABILIZER	1
HB-TBA60	HDWR BAG: TBA60	1

**Component Box Breakdown:****Part # TBA80**

Item #	Description	Qty
TBA80-B	TRACK BAR, FRONT	1
RE34X34R	ROD END, 3/4 R-H THREAD	1
34RFTJN	JAM NUT, 3/4 R-H THREAD	1
7400WS	STEERING DAMPER, WHITE	1
BTIE	BOOT CABLE TIE, RED	1
B10RS	BOOT STABILIZER, RED	1
HSS	DECAL, HYDRO STABILIZER	1
HB-TBA60	HDWR BAG: TBA60	1

**Part # TBA80B**

Item #	Description	Qty
TBA80-B	TRACK BAR, FRONT	1
RE34X34R	ROD END, 3/4 R-H THREAD	1
34RFTJN	JAM NUT, 3/4 R-H THREAD	1
8400BS	STEERING DAMPER, BLACK	1
BTIE-K	BOOT CABLE TIE, BLACK	1
B10KS	STABILIZER BOOT, BLACK	1
MXSD	DECAL, BLACK MAX STABILIZER	1
HB-TBA60	HDWR BAG: TBA60	1

**Part # TBA80M**

Item #	Description	Qty
TBA80-B	TRACK BAR, FRONT	1
RE34X34R	ROD END, 3/4 R-H THREAD	1
34RFTJN	JAM NUT, 3/4 R-H THREAD	1
9400WS	STEERING DAMPER, SILVER	1
BTIE-K	BOOT CABLE TIE, BLACK	1
B10KS	STABILIZER BOOT, BLACK	1
SSD	DECAL, SILVER STABILIZER	1
HB-TBA60	HDWR BAG: TBA60	1

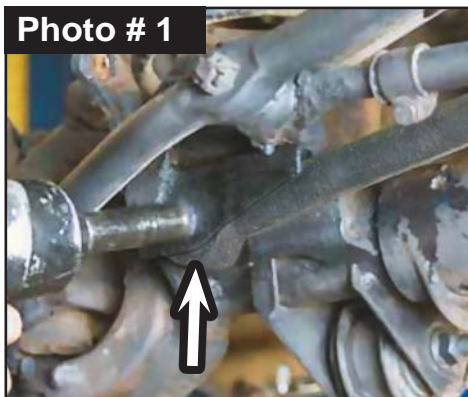
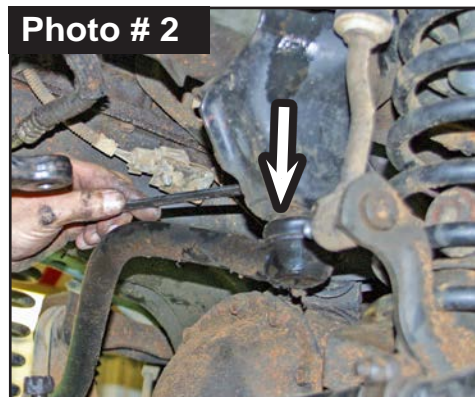
**Installation: Note:** Save all factory components & hardware for reuse, unless noted.

1. With vehicle on flat level ground, set emergency brake & chock rear tires \ wheels.
2. Raise front of vehicle, support frame rails using jack stands at indicated lift points in OEM service manual.
3. Place a floor jack underneath front axle for support. Put a slight load on axle \ jack to prevent axle from moving. Remove OEM front shocks.

4. Remove OEM track bar.  
Disconnect track bar from passenger side lower axle mount. (See Photo # 1)

**Note:** It may be necessary to pry track bar loose from axle mount.

Disconnect track bar from driver side upper frame mount. (See Photo # 2)

**Photo # 1****Photo # 2**

5. Remove OEM steering stabilizer. Disconnect stabilizer from OEM drag link at stud mount using a 11/16" using a socket \wrench. Remove stud mount from drag link. Disconnect stabilizer from axle mount using a 18mm socket \wrench.

6. Disconnect OEM sway bar end links from front axle mounts.  
**Note:** Some early models use a T55 Torx Bit & 19mm socket \wrench for lower mount. (Later models used a bolt with a serrated neck that is pressed into OEM bracket, so it will not rotate.) (See Photo # 3)

7. Locate Skyjacker Adjustable Track Bar. Locate # HB-TBA60 Hardware Bag. Coat two (2) # 2888 Poly Bushing halves & one (1) # ES24 1.38 Long Steel Sleeve with a water resistant grease. Press bushings & sleeve into upper track bar mount.

Insert bushing end of Skyjacker track bar into OEM Steering Stabilizer location on passenger side axle (Not OEM track bar location).

Attach Skyjacker # 7146-B Steering Stabilizer Mounting Bracket with tab over OEM sway bar end link stud with OEM nut. (See Photo # 4)

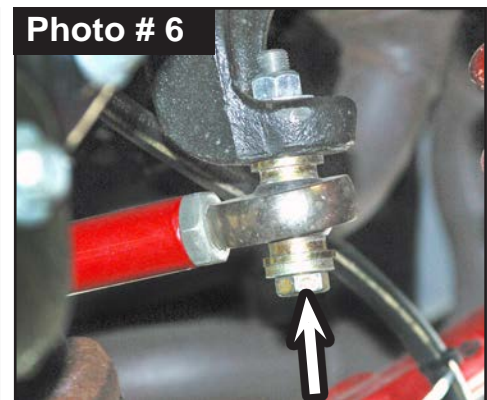
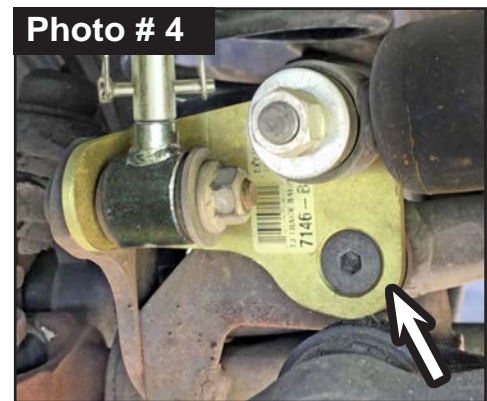
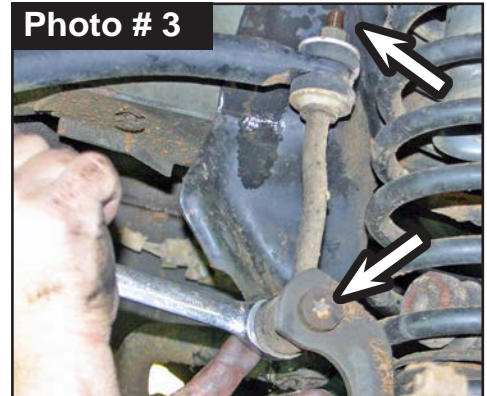
Attach Skyjacker track bar to mounting bracket with supplied 1/2" x 2-1/2" Flat Socket Head Bolt & 1/2" Stover Nut using a 5/32" Hex Key Socket & 3/4" socket \wrench. (See Photo # 4)

**Note:** In extreme situations (depending on pinion angle & caster settings), OEM drag link may contact Skyjacker Steering Stabilizer Mounting Bracket when turning. This bracket can be ground slightly for clearance if needed.

8. From # HB-TBA60 Hardware Bag, install Skyjacker Track Bar rod end by following hardware pictured. (See Photos # 5 & # 6) Keep rod end square (parallel) with frame mount. **Note:** Be sure No More than 1/2" of threads are extended from track bar including jam nut measurement.

On rod end, rotate jam nut against steel tubing. Hold rod end in place with a pipe wrench & use another pipe wrench or 1-1/8" wrench on jam nut to completely tighten.

**Tech Note:** Jam nut must be tightened against steel tubing before installation.

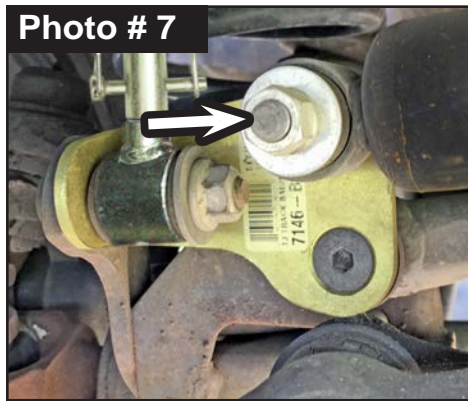




9. Locate Skyjacker # 140629 EB6 Stud & # P837 Tapered Stud Hardware.

Install Skyjacker # 140629 EB6 Stud into upper mounting hole on Skyjacker Track Bar Bracket through OEM drag link mounting hole. Attach with stud hardware. (See Photo # 7)

Install Skyjacker # P837 Tapered Stud into OEM drag link. Attach with stud hardware. (See Photo # 8)



Coat two (2) # Hourglass 5/8 Bushings with a water resistant grease. Press bushings into Skyjacker Steering Stabilizer eyes. Attach to Skyjacker bracket stud mount & OEM drag link stud mount.

10. Lower vehicle to ground.

### **Final Clearance Check & Torque Steps:**

Drag Link & Track Bar Must Be Adjusted to Center Steering Wheel Before Vehicle Is Driven. Failure to Do So Will Cause Computer Errors, Odd Handling Characteristics, & Poor Performance. Drag link at pitman arm mount. Torque 35 ft-lbs.

Center Track Bar. Check vehicle to see if body is centered over the front tires \ wheels.

Take a measurement from inside of tire to frame.

Repeat procedure on opposite side of vehicle.

Compare two (2) measurements

If not centered, disconnect track bar rod end from vehicle & adjust rod end in \ out as needed to correct center.

1. Start vehicle. Make sure there are no dash lights pertaining to suspension.
2. Jounce vehicle a couple of times. This will help suspension settle to new ride height. Cycle steering lock-to-lock & check all components for proper operation & clearances.
3. **Front Tighten & Torque Sequence.**  
Skyjacker track bar at lower axle \ bracket mount using a 5/32" Hex Key Socket & 3/4" socket \ wrench. Torque 90 ft-lbs.  
Skyjacker track bar at upper frame mount using a 3/4" socket \ wrench. Torque 90 ft-lbs.  
Sway bar end link upper bolt using a 3/4" socket \ wrench. Torque 90 ft-lbs.  
Sway bar end link lower bolt using a 18mm socket \ wrench & T55 Torx bit. Torque 75 ft-lbs.

### **Final Notes:**

- After installation is complete, double check that all nuts & bolts are tight. Refer to following chart for proper torque specifications. (**Note:** Do not re-tighten nuts & bolts where thread lock compound was used.)
- With vehicle placed on ground, cycle steering lock to lock & inspect steering, suspension, brake lines, front & rear drivelines, fuel lines & wiring harnesses for proper operation, tightness & adequate clearance.
- After first 100 miles, check all hardware for proper torque & periodically thereafter.