



www.skyjacker.com

1984-2001 Jeep Cherokee XJ Transfer Case Lowering Kit Part # TCL30 / TCL32

REQUIRED TOOL LIST:

- Safety Glasses
- Metric / Standard Wrenches & Sockets
- Floor Jack
- Torque Wrench

Before beginning the installation, thoroughly & completely read these instructions. Please refer to the Parts List to insure that all parts & hardware are received prior to the disassembly of the vehicle. If any parts are found to be missing, contact SKYJACKER® Customer Service at 318-388-0816 to obtain the needed items. If you have any questions or reservations about installing this product, contact SKYJACKER® Technical Assistance at 318-388-0816.

Component Box Breakdown:

Part #: TCL30

Item #	Description	Qty
TCL10SX6-S	TRANS CS LWR SPCR 1X1.5X6	2
HB-TCL30	HDWR BAG: TCL30	1
I-TCL30	INSTRUCTION SHEET: TCL30	1

Component Box Breakdown:

Part #: TCL32

Item #	Description	Qty
TCL10SX6-S	TRANS CS LWR SPCR 1X1.5X6	2
TCL10SX6C-S	T-CASE LWR SPCR 1X1.5X6 CTR	2
HB-TCL32	HDWR BAG: TCL32	1
I-TCL30	INSTRUCTION SHEET: TCL30	1

Hardware Bag Breakdown:

Part # HB-TCL30 (Included With TCL30)

Item #	Description	Qty
TCL24-B	TRANS CASE LNKG RELOC B-TJ	1
14X1FTB	1/4 X 1 FINE THD BOLT G8	2
14FTN	1/4-28 FINE N/I LOCK NUT	2
14SAEW	1/4 SAE WASHER	2

Item #	Description	Qty
10MMX50MMB	10 X 50 METRIC BOLT/10.9	4
10MMLW	10MM LOCK WASHER	4
38SAEW	3/8 SAE WASHER	4
LT100	NUTS N' BOLTS 427 1 ML TUBE	1

Part # HB-TCL32 (Included With TCL32)

Item #	Description	Qty
TCL24-B	TRANS CASE LNKG RELOC B-TJ	1
14X1FTB	1/4 X 1 FINE THD BOLT G8	2
14FTN	1/4-28 FINE N/I LOCK NUT	2
14SAEW	1/4 SAE WASHER	2
10MMX50MMB	10 X 50 METRIC BOLT/10.9	8

Item #	Description	Qty
10MMLW	10MM LOCK WASHER	8
10MMN	10 MM N/I LOCKNUT	4
38SAEW	3/8 SAE WASHER	12
LT100	NUTS N' BOLTS 427 1 ML TUBE	1

Installation:

1. Park the vehicle on a flat, level surface. Block the front & rear of the front tires.
2. Place the transmission in neutral.
3. Loosen the engine mount bolts about ½ turn.
4. Support the transfer case cross member with a transmission or floor jack. Remove the two bolts, two nuts, & two studs that hold the cross member to the frame. (See Photo # 1)
5. Lower the cross member slowly approximately 1 1/8".
6. Place the new Skyjacker 1" x 1 ½" spacers (Part # TCL10SX6-S) between the frame & cross member, so the edge of the spacers are nearly flush with the ends of the cross member & be sure that all the mounting holes are lined up. (See Photo # 2) For Part # TCL32 installation, also place the new Skyjacker 1" x 1 ½" spacers (Part # TCL10SX6C-S) between the Skyjacker inner lower control arm bracket & cross member. (See Arrow in Photo # 3)
7. Slowly raise the jack to firmly hold the spacers in place. Using the new bolts furnished in this kit, place a lock washer on the bolt first, then a flat washer second. With everything in position, place a drop of thread lock compound on the threads of each bolt supplied in this kit. Insert the new bolts & torque to 33 ft-lbs.
8. Remove the jack & set aside.
9. Re-torque the bolts loosened in Step # 3. The engine mount to block bolts torque to 45 ft-lbs. The engine mount to frame bolts torque to 30 ft-lbs. The thru bolts torque to 48 ft-lbs.
10. Install the transfer case linkage bracket. (See Steps # 1 thru # 5 Below)



TRANSFER CASE LINKAGE BRACKET INSTALLATION:

1. Install the new Skyjacker transfer case linkage pivot drop bracket to the stock pivot bracket using the OEM hardware. Using the two 1/4" x 1" bolts with a flat washer & self locking nut, bolt the ball swivel bracket (See Arrow in Photo # 4) to the new Skyjacker drop bracket. **Note:** The bracket has two sets of holes. The bottom holes are for a 4.5" lift as shown & the upper holes are for a 3" lift.
2. Placing the pivot bracket back in location, start the end of the rod through the ball swivel & bolt the bracket in location with the OEM hardware. (See Photo # 5)
3. Check to make sure that the transfer case will fully engage at each end of the shifter travel. If linkage adjustment is required, see Step # 4.
4. Check the transfer case shifter to see if it will move to 4L. If not, the linkage will need adjusting as follows. Place the shifter in 4L, loosen the adjustment bolt ("A" Arrow in Photo # 6), & push the linkage ("B" Arrow in Photo # 6) forward until it stops. Now retighten adjustment bolt. Check to be sure the 4WD works properly.
5. On 5 speed models, engage the clutch & check the transmission shifter to see if it will go into 2nd gear. If not, the shifter housing on the floor will need trimming. Remove the center console, pull back the carpet, remove the screws holding the shifter boot to the floor, & trim or grind the floor board until sufficient clearance is obtained. (See Arrow in Photo # 7) Shift through each gear to check clearance at this time. Now reinstall the shifter boot, carpet, & console.

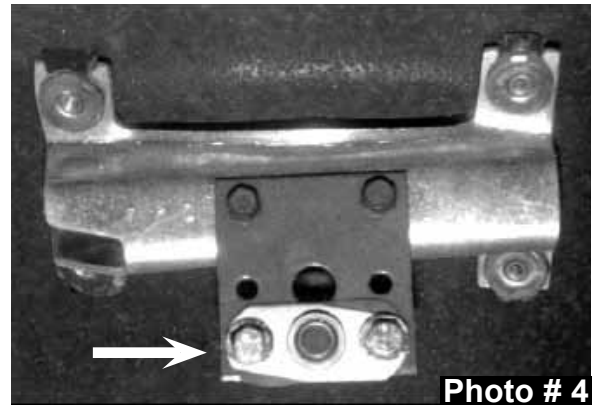


Photo # 4

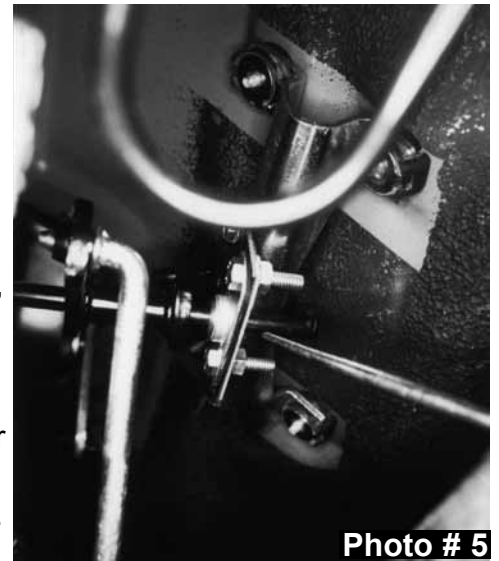


Photo # 5

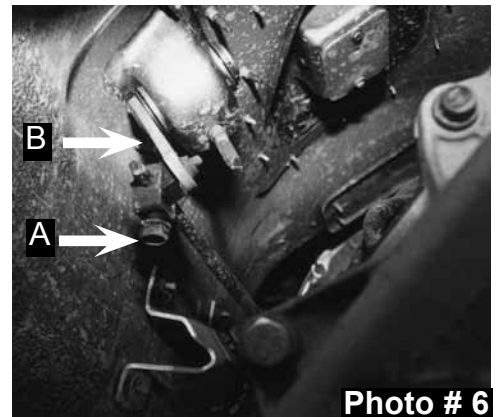


Photo # 6

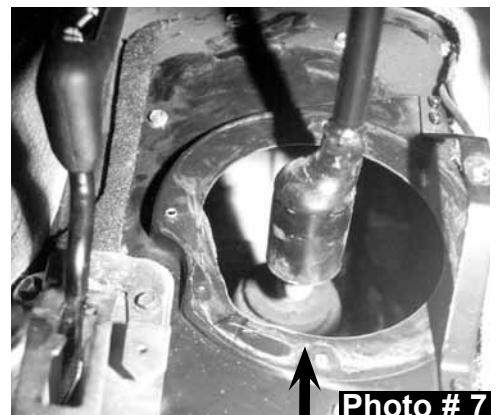


Photo # 7

TORQUE SPECIFICATIONS

<u>INCH SYSTEM</u>			<u>METRIC SYSTEM</u>		
Bolt Size	Grade 5	Grade 8	Bolt Size	Class 8.8	Class 10.9
5/16	15 FT LB	20 FT LB	6MM	5 FT LB	9 FT LB
3/8	30 FT LB	35 FT LB	8MM	18 FT LB	23 FT LB
7/16	45 FT LB	60 FT LB	10MM	32 FT LB	45 FT LB
1/2	65 FT LB	90 FT LB	12MM	55 FT LB	75 FT LB
9/16	95 FT LB	130 FTLB	14MM	85 FT LB	120 FT LB
5/8	135 FT LB	175 FT LB	16MM	130 FT LB	165 FT LB
3/4	185 FT LB	280 FT LB	18MM	170 FT LB	240 FT LB

- The above specifications are not to be used when the bolt is being installed with a bushing.

Seat Belts Save Lives, Please Wear Your Seat Belt.