



2007 - 2016 Toyota Tundra 6" Suspension Lift Installation Instructions

www.skyjacker.com

REQUIRED TOOL LIST:

- * Safety Glasses
- * Metric / Standard Wrenches & Sockets
- * Allen Wrenches
- * Drill / Assorted Drill Bits
- * Floor Jack
- * Jack Stands
- * Measuring Tape
- * Torque Wrench
- * Reciprocating Saw (4WD Models)
- * Grinder (4WD Models)
- * Welding Machine (4WD Models)



Before beginning the installation, thoroughly & completely read these instructions & the enclosed driver's WARNING NOTICE. Affix the WARNING decal in the passenger compartment in clear view of all occupants. Refer to the Parts List to insure that all parts & hardware are received prior to the disassembly of the vehicle. If any parts are found to be missing, contact SKYJACKER® Customer Service at 318-388-0816 to obtain the needed items. If you have any questions or reservations about installing this product, contact SKYJACKER® Technical Assistance at 318-388-0816.

Park the vehicle on a level concrete or asphalt surface. Many times a vehicle is not level (side-to-side) from the factory & is usually not noticed until a lift kit has been installed which makes the difference more visible. Using a measuring tape, measure the front & rear (both sides) from the ground up to the center of the fender opening above the axle. Record this information below for future reference.

Driver Side Front: _____ Passenger Side Front: _____

Driver Side Rear: _____ Passenger Side Rear: _____

Important Notes:

- OEM wheels can not be reused in the installation of this suspension lift. 17" diameter or larger wheels must be used to install this suspension lift.
- If larger tires (10% more than the OEM diameter) are installed, speedometer recalibration will be necessary. Contact your local Toyota dealer or an authorized dealer for details.
- After installation, a qualified alignment facility is required to align the vehicle to the OEM specifications.

Kit Box Breakdown:

TU761A:

<u>ITEM#</u>	<u>DESCRIPTION</u>	<u>QTY</u>
TU756STS	Tundra Performance Strut	2
TU76L	Tundra Driver Knuckle	1
TU76R	Tundra Passenger Knuckle	1
TU76FCM-B	Tundra Front Cross Member	1
TU76RCM-B	Tundra Rear Cross Member	1
TU746BSB-D	Tundra Driver Bump Stop Bracket	1
TU746BSB-P	Tundra Passenger Bump Stop Bracket	1
TU76SBL	Sway Bar Endlinks, Pair	1
TUCBL214	2.25" Carrier Bearing Lowering Spacers	1
SBL20	Sway Bar Lowering Brackets, Pair	1
HB-TU746-BLE	Brakeline Extension Bracket Hardware Bag	1
HB-TU746-BS/DB	Bump Stop / Differential Hardware Bag	1
HB-TU76C	Rear Cross Member Caps, Pair	1
HB-TU76-CM	Front & Rear Cross Member Hardware Bag	1
HB-TU76SSE	Steering Stop Extensions, Pair	1

Hardware Bag Breakdown:

HB-TU746-BLE

<u>ITEM#</u>	<u>DESCRIPTION</u>	<u>QTY</u>
F460BLE-F	Front Brake Line Ext Bracket	2
RBLE03-S	Rear Brake Line Ext Bracket	1
RBLE10-S	ABS Line Ext Bracket	1
RBLE60U-S	E-brake Ext Bracket	2
VH1410	Vent Hose 1/4" X 10"	1
516X34CTBG5	5/16" X 3/4" Coarse Thread Bolt	6
516CTN	5/16"-18 Lock Nut	6

HB-TU746BS/DB

<u>ITEM#</u>	<u>DESCRIPTION</u>	<u>QTY</u>
10x25MMB-1.25	10MM x 25MM - 1.25 TPI Bolt	2
10X80MMB-1.25	10MM X 80MM - 1.25TPI Bolt	2
10MMN-1.25	10MM - 1.25 TPI Lock Nut	4
38SAEW	3/8" SAE Washer	8
12USSW	1/2" USS Washer	2
916x212FTB	9/16" x 2 1/2" Fine Thread Bolt	1
916x6FTB	9/16" x 6" Fine Thread Bolt	2
916FTN	9/16"- 18 Lock Nut	3
916SAEW	9/16" SAE Washer	4

HB-TU76C

ITEM#	DESCRIPTION	QTY
TU76C-DS	Driver Cross Member Cap	1
TU76C-PS	Pass Cross Member Cap	1

HB-TU76-CM

ITEM#	DESCRIPTION	QTY
18x50MMB	18MM x 50MM- 2.5" TPI Bolt	4
18MMFW	5/8" - A325 Flat Washer	8
18MMN	18MM-2.5 TPI Lock Nut	4
24x50MMB	24MM x 50MM- 3.0 TPI Bolt	4
24MMFW	24MM Flat Zinc Washer	8
24MMN	24MM- 3.0 TPI Lock Nut	4

HB-TU76SSE

ITEM#	DESCRIPTION	QTY
TU76SSE-D	Driver Steering Stop Plate	1
TU76SSE-P	Pass Steering Stop Plate	1

Kit Box Breakdown:**TU761PR:**

ITEM#	DESCRIPTION	QTY
916x212x12U	9/16" x 2 1/2" x 12" Square U-bolt	4
HB-916	8- 9/16" Lock Nut	1
RBF425	4.25" Flat Block	2

TU761PRS:

ITEM#	DESCRIPTION	QTY
916x212x734U	9/16" x 2 1/2" x 7 3/4" Square U-bolt	4
HB-916	8- 9/16" Lock Nut	1

Hardware Bag Breakdown:**HB-916**

ITEM#	DESCRIPTION	QTY
916FTN	9/16-18 Lock Nut	8

Front Installation:

1. With the vehicle on flat level ground, set the emergency brake & block the rear tires / wheels. Place a floor jack under the lower control arm's front cross member & raise the vehicle. Place jack stands under the frame rails, behind the front wheel wells & lower the frame onto the jack stands. **Note:** If the vehicle is equipped with a skid plate, remove it at this time. This is in preparation for Step # 8.
2. Remove the front tires / wheels. (See Photo # 1)
3. Remove the tie rod end nut from the steering knuckle & remove the tie rod end from the steering knuckle using a tie rod puller or similar tool. (See Photo # 2)
4. Disconnect the brake caliper from the brake rotor & disconnect the brake line from the upper A-arm. (See Photo # 3) **Note:** Simply wire the brake caliper out of the way, it will not be necessary to disconnect the brake line from the brake caliper.
5. Disconnect the sway bar end links & remove the sway bar. (See Photo # 4) Disconnect the three upper strut retaining nuts. (See Photo # 5)
6. Disconnect the upper A-arms from the steering knuckles. **Note:** It may be necessary to strike the side of the steering knuckle with a dead blow hammer to dislodge the upper ball joint. Be careful not to damage the ball joint itself. (See Photo # 6)
7. **4WD Models:** Disconnect the CV-shafts. (See Photo # 7)
8. Disconnect the lower A-arm. **Note:** Be careful to place a jack under the A-arm for support. Disconnect the lower strut mount & remove.



Photo # 1



Photo # 2



Photo # 3



Photo # 4



Photo # 5



Photo # 6



Photo # 7

9. **4WD Models:** Support the front differential with a transmission jack. (See Photo # 8)
10. **4WD Models:** Remove the differential mounting bolts & remove the differential brackets. (See Photo # 9)
11. **4WD Models:** It will be necessary to cut the rear cross member with a reciprocating saw. The driver side will need to be cut for front driveshaft clearance. The measurement is 3 3/8" from the inside of the frame rail. (See Photo # 10)



Photo # 8

12. **4WD Models:** It will be necessary to cut the passenger side cross member 2 1/2" from the lower A-arm mount. (See Photo # 11) **Note:** It will be necessary to grind down this area after cutting for the new Skyjacker cross member caps to be welded in place. (See Photos # 12 & # 13)



Photo # 9

13. The OEM alignment cam brackets (alignment ears) will need to be ground down for the installation of the new Skyjacker cross members. This will have to be done on the front side of both front & rear lower A-arm mounts. (See Photo # 14)



Photo # 12

14. Install the new Skyjacker front cross member using the supplied 24MM bolts, washers, & nuts. **Note:** Do not tighten the hardware completely at this time. The cross member should be installed with the bolt flanges on the front side of the OEM cross member flanges. (See Photo # 15)



Photo # 10



Photo # 13



Photo # 11

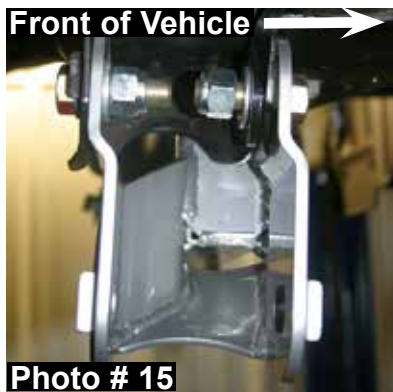
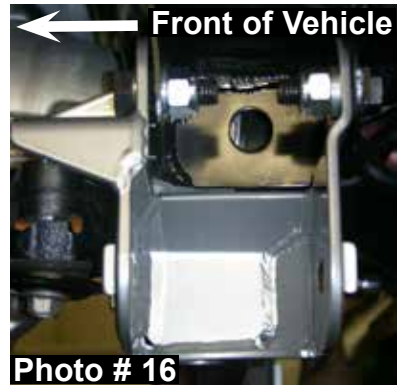


Photo # 15



Photo # 14

15. Install the new Skyjacker rear cross member using the supplied 18MM bolts, washers, & nuts. **Note:** Do not tighten the hardware completely at this time. The cross member should be installed with the bolt flanges on the front side of the OEM cross member flanges. (See Photo # 16)



16. **4WD Models:** Raise & safely support the front differential into place using the supplied 9/16" x 6" bolts, washers, & nuts. Loosely bolt the differential to the new front cross member. (See Photo # 17) Attach the differential pinion support bracket, under the pinion, to the new rear cross member using the OEM hardware & the supplied 9/16" x 2 1/2" bolt, washers, & nut. (See Photos # 18 & # 19) Install the new Skyjacker differential vent hose & tighten all cross member & differential hardware at this time.



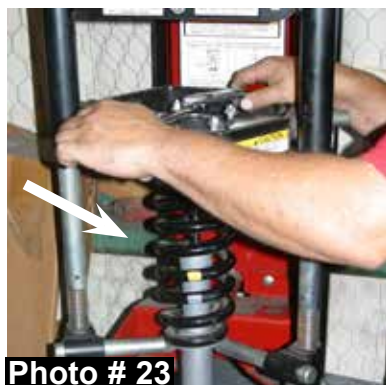
17. Remove the hub bearing assembly from the OEM knuckle & reinstall to the new Skyjacker steering knuckle using the OEM hardware. Make sure the OEM seal (4WD Models) or OEM hub plug (2WD Models) is reinstalled square in the new Skyjacker steering knuckle. (See Photos # 20 & # 21)



18. Weld in place the new Skyjacker steering stop spacers. Match these new steering stop spacers with the contour of the OEM steering stops. Weld in place by placing a weld across the top & bottom of the supplied spacers. (See Photo # 22)



19. Disassemble the OEM strut assembly using a strut spring compressor. (See Photo # 23)



20. Install the OEM coil & top assembly to the new Skyjacker strut.

Note: There are four snap ring grooves located on the new Skyjacker strut body. The ring is installed in the third groove from the bottom of the strut when shipped. This will yield 6" of lift. The top upper groove is only to be used when 6" of lift is desired, but aftermarket accessories have been added that weigh the front end down, ie. Winch, After Market Bumper, & etc. The lower ring grooves may be used if you would like to keep the OEM rake. (Front of vehicle lower than the rear). **Once the coil spring seat retaining ring has been placed, check all suspension components for any contact or interference. If suspension component contact or interference is present, lower the coil spring seat by lowering the coil spring seat retaining ring until no contact or interference is present.**

Note: Skyjacker provides a new upper strut retaining nut for the new replacement strut. (See Photo # 24) Install the new Skyjacker strut using the OEM upper hardware. (See Photo # 25)

21. Install the new Skyjacker bump stop brackets using the supplied 10mm x 25mm bolts, 10mm x 80mm bolts, washers, & nuts. (See Photo # 26) Attach the OEM bump stops to the new bump stop brackets using the supplied 10mm nuts. **Note:** The bump stop brackets are side specific for passenger & driver side. (See Photo # 27)

22. Reinstall the lower A-arms to both the driver & passenger sides. Reinstall the lower strut mount to the lower A-arm.

23. **4WD Models:** Install the CV axles & attach the new Skyjacker steering knuckle to the upper & lower A-arm using the OEM hardware.

24. Attach the OEM ABS line to the upper A-arm & relocate the ABS line to the new Skyjacker steering knuckle.

25. **4WD Models:** Attach the CV axle to the new Skyjacker steering knuckle. (See Photo # 28)



26. Install the new Skyjacker front brake line extension brackets using the OEM hardware & the supplied 5/16" x 3/4" bolts & nuts. (See Photo # 29)

27. To install the tie rod end to the new Skyjacker steering knuckle the tie rods will need to be swapped from driver to passenger & passenger to driver side. Attach the outer tie rod to the new Skyjacker steering knuckles using the OEM hardware. Reinstall the brake rotors, brake calipers, & etc.

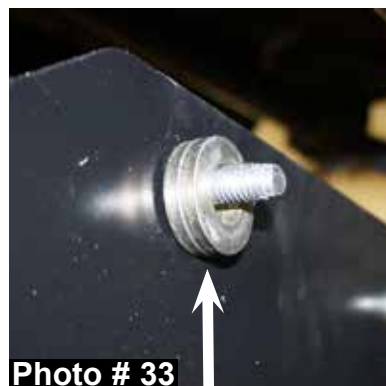
28. Reinstall the sway bar using the new Skyjacker drop brackets. The new sway bar brackets will install between the sway bar & the OEM mount on the frame using the OEM hardware. The sway bar will be attached to the new brackets using the supplied 7/16" x 1 1/2" bolts, washers, & nuts. **Note:** The brackets should offset the sway bar towards the front of the vehicle. (See Photo # 30)

29. Install the new Skyjacker sway bar end links. Be sure to install the end link with the pivoting end at the sway bar. **Note:** The sway bar end links are side specific. (See Photo # 31)

30. **Front Differential Skid Plate Installation: Part # TU76SKD (Optional / Sold Separately)** Hold the new Skyjacker front differential skid plate in place on the front cross member. Mark, center punch, & drill the two front mounting holes of the new Skyjacker front differential skid plate using a 3/8" drill bit. (See Photo # 32)

31. Install the new Skyjacker front differential skid plate to the new front cross member using the supplied 3/8" x 1 1/4" thread cutter bolts & washers. **Note:** Install two of the supplied 9/16" extra thick washers to each thread cutter bolt between the new front differential skid plate & new front cross member. (See Photo # 33)

32. Hold the new Skyjacker front differential skid plate in place on the rear cross member. Mark, center punch, & drill the two rear mounting holes of the new Skyjacker front differential skid plate using a 3/8" drill bit.



33. Install the new Skyjacker front differential skid plate to the new rear cross member using the supplied 3/8" x 1 1/4" thread cutter bolts & washers. (See Photo # 34)

34. Install the front tires / wheels & lower the front of the vehicle to the ground.

Rear Installation:

1. With the vehicle on flat level ground, block the front tires / wheels. Raise the rear of the vehicle & properly support using jack stands. Remove the rear tires / wheels.
2. Disconnect the E-brake cables, ABS line, & rear brake lines from the differential.
3. Support the rear differential & remove the rear shocks & u-bolts.
4. **Rear Block Installation:**
Install the new Skyjacker rear blocks & new Skyjacker u-bolts.
Note: Install the new rear blocks with the female hole of the new rear block offset towards the front of the vehicle. (See Photo # 35)
5. **Rear Spring Installation:**
Install the new Skyjacker rear leaf springs using the OEM hardware.
6. Install the new Skyjacker u-bolts. (See Photo # 36)
7. Install the new Skyjacker rear shocks using the OEM hardware.
8. Install the new Skyjacker E-brake cable brackets, ABS line bracket, & rear brake line bracket to the differential using the supplied 5/16" x 3/4" bolts & nuts. (See Photos # 37, # 38, & # 39) **Note:** The OEM rear brake line cable clamps must be inverted to raise the OEM brake line up from the differential. (See Photo # 39)



Photo # 34

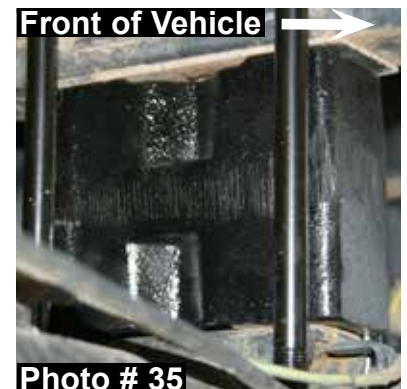


Photo # 35



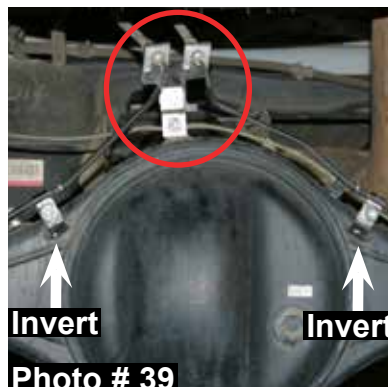
Photo # 36



Photo # 37



Photo # 38



Invert

Invert

Photo # 39

9. Models equipped with an OEM carrier bearing will need to install the new Skyjacker carrier bearing lowering spacers using the supplied 10mm x 80mm bolts & washers. (See Photo # 40)

10. Install the rear tires / wheels & lower the rear of the vehicle to the ground.



Final Notes:

- After the installation is complete, double check that all nuts & bolts are tight. Refer to the following chart for the proper torque specifications. (Do not retighten the nuts & bolts where thread lock compound was used.)
- With the vehicle on the ground, cycle the steering lock to lock & inspect the steering, suspension, brake lines, front & rear drivelines, fuel lines, & wiring harnesses for proper operation, tightness, & adequate clearance.
- Have the headlights readjusted to the proper settings.
- Have a qualified alignment center realign the vehicle to the OEM specifications.
- After the first 100 miles, check all hardware for the proper torque & periodically thereafter.

<u>TORQUE SPECIFICATIONS</u>					
<u>INCH SYSTEM</u>			<u>METRIC SYSTEM</u>		
Bolt Size	Grade 5	Grade 8	Bolt Size	Class 8.8	Class 10.9
5/16	15 FT LB	20 FT LB	6MM	5 FT LB	9 FT LB
3/8	30 FT LB	35 FT LB	8MM	18 FT LB	23 FT LB
7/16	45 FT LB	60 FT LB	10MM	32 FT LB	45 FT LB
1/2	65 FT LB	90 FT LB	12MM	55 FT LB	75 FT LB
9/16	95 FT LB	130 FT LB	14MM	85 FT LB	120 FT LB
5/8	135 FT LB	175 FT LB	16MM	130 FT LB	165 FT LB
3/4	185 FT LB	280 FT LB	18MM	170 FT LB	240 FT LB

• The above specifications are not to be used when the bolt is being installed with a bushing.

Seat Belts Save Lives, Please Wear Your Seat Belt.