



2007 - 2016 Toyota Tundra 6" Front Coil-Over Shocks Installation Instructions

www.skyjacker.com

REQUIRED TOOL LIST:

- * Safety Glasses
- * Metric / Standard Wrenches & Sockets
- * Floor Jack
- * Jack Stands
- * Measuring Tape
- * Torque Wrench
- * Grinder
- * Ball Joint Puller
- * Tie Rod Puller



Before beginning the installation, thoroughly & completely read these instructions & the enclosed driver's WARNING NOTICE. Affix the WARNING decal in the passenger compartment in clear view of all occupants. Refer to the Parts List to insure that all parts & hardware are received prior to the disassembly of the vehicle. If any parts are found to be missing, contact SKYJACKER[®] Customer Service at 318-388-0816 to obtain the needed items. If you have any questions or reservations about installing this product, contact SKYJACKER[®] Technical Assistance at 318-388-0816.

Park the vehicle on a level concrete or asphalt surface. Many times a vehicle is not level (side-to-side) from the factory & is usually not noticed until a lift kit has been installed which makes the difference more visible. Using a measuring tape, measure the front (both sides) from the ground up to the center of the fender opening above the axle. Record this information below for future reference.

Driver Side Front: _____ Passenger Side Front: _____

Important Notes:

- These coil-over shocks are to be used in conjunction with an existing 6" suspension lift. **Do not** install these coil-over shocks on a vehicle that does not have a 6" suspension lift.
- If larger tires (10% more than the OEM diameter) are installed, speedometer recalibration will be necessary. Contact your local Toyota dealer or an authorized dealer for details.
- After installation, a qualified alignment facility is required to align the vehicle to the OEM specifications.

Component Box Breakdown:

Part #: TU762LS

Item #	Description	Qty	Item #	Description	Qty
SKYTU762LS-PR	TUNDRA C/O SHOCKS / PAIR	1	HB-TU762USM	HDWR BAG: UPR C/O SHKS	1
3X18X700	TUNDRA C/O SHOCK SPRING	2	I-TU762LS	INST SHEET: TU762LS	1
TU762USM-B	TUNDRA UPPER C/O SHK BRKT	2			

Hardware Bag Breakdown:

Part # HB-TU762USM

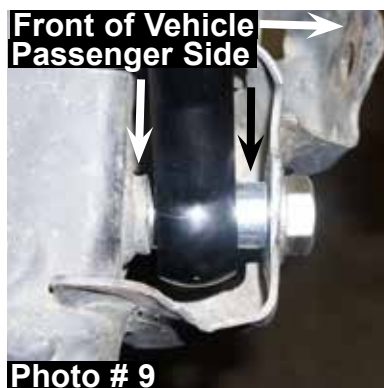
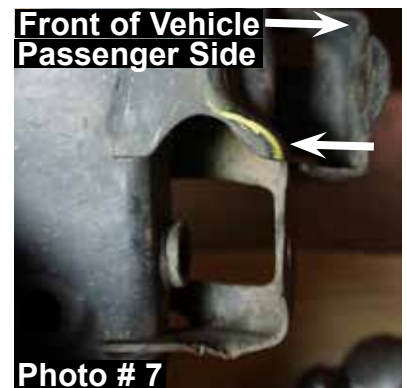
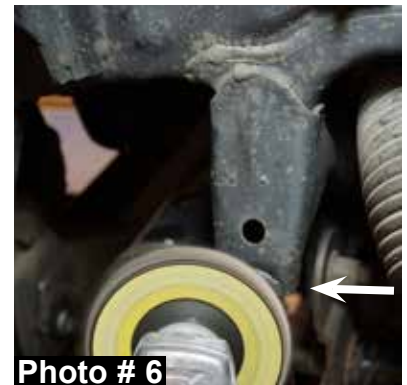
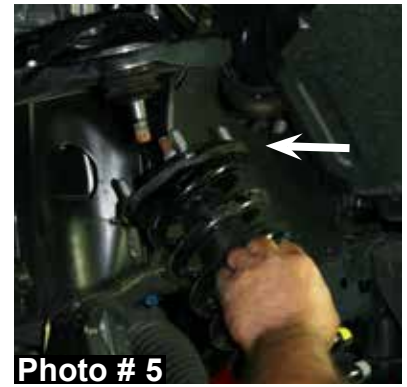
Item #	Description	Qty	Item #	Description	Qty
716X1FTB	7/16 X 1 FINE THREAD BOLT	8	12X3FTB	1/2 X 3 FINE THREAD BOLT	2
716SAEW	7/16 SAE WASHER	16	12SAEW	1/2 SAE WASHER	4
716FTN	7/16 FINE THREAD LOCK NUT	8	12FTN	1/2 FINE THREAD LOCK NUT	2

Front Installation:

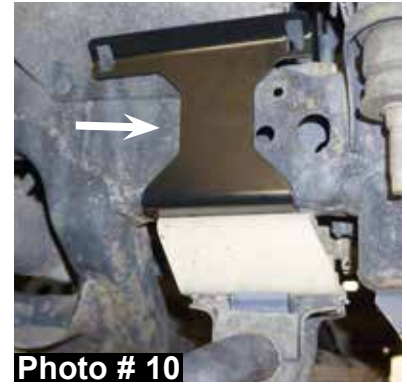
1. With the vehicle on flat level ground, set the emergency brake & block the rear tires / wheels. Place a floor jack under the lower control arm front cross member & raise the front of the vehicle.
2. Place jack stands under the frame rails, behind the front wheel wells & lower the frame onto the jack stands.
3. Remove the front tires / wheels. (See Photo # 1)
4. Disconnect the outer tie rod ends from the steering knuckles using a tie rod puller or similar tool. (See Photo # 2)
5. Disconnect the sway bar end links from the lower control arms. (See Photo # 3)
6. While supporting the lower control arms, disconnect the upper control arms from the steering knuckles using a ball joint puller or similar tool. (See Photo # 4)
7. Remove the lower strut mounting bolts.



8. Remove the upper strut mounting bolts & remove the strut assemblies. (See Photo # 5)
9. Remove the lower tab from each of the forward OEM front bump stop brackets using a grinder or similar tool. (See Photo # 6) **Note:** This step is for coil-over shock clearance.
10. Remove the upper left corner (driver side) & upper right corner (passenger side) facing forward of each OEM lower strut mounting location using a grinder or similar tool. (See Line in Photo # 7) **Note:** This step is for coil-over shock clearance.
11. Prime / paint all raw metal exposed from grinding the OEM lower strut mounting brackets.
12. Install the new Skyjacker upper coil-over shock mounting brackets to the new Skyjacker coil-over shock assemblies with the small hole of the new upper coil-over shock mounting brackets facing outward using the supplied 1/2" x 3" bolts, washers, nuts, & a 3/4" socket / wrench. (See Photo # 8) **Note:** Each new Skyjacker coil-over assembly will be installed with the remote resevoir facing toward the front of the vehicle.
13. Install the new Skyjacker coil-over shock assemblies to the OEM upper strut mounting locations using the supplied 7/16" x 1" bolts, washers, nuts, & a 5/8" socket / wrench. (See Photo # 8) **Note:** Each new Skyjacker coil-over assembly will be installed with the remote resevoir facing toward the front of the vehicle.
14. Install the new Skyjacker coil-over shock assemblies to the OEM lower strut mounting locations using the supplied spacers, 5/8" x 7 1/2" bolts, washers, nuts, & a 15/16" socket / wrench. (See Photo # 9) **Note:** Install the new Skyjacker long spacers toward the front of the vehicle & the new Skyjacker short spacers toward the rear of the vehicle.
15. While supporting the lower control arms, connect the upper control arms to the steering knuckles.
16. Connect the outer tie rod ends to the steering knuckles.



17. Disconnect the sway bar from the frame & install the new Skyjacker remote reservoir brackets. (See Photo # 10)
18. Connect the sway bar end links to the lower control arms.
19. Install the new Skyjacker remote reservoirs to the new Skyjacker remote reservoir brackets using the supplied screw clamps. (See Photo # 11)
20. Install the front tires / wheels & lower the vehicle to the ground.



Final Notes:

- After the installation is complete, double check that all nuts & bolts are tight. Refer to the following chart for the proper torque specifications. (Do not retighten the nuts & bolts where thread lock compound was used.)
- With the vehicle placed on the ground, cycle the steering lock to lock & inspect the steering, suspension, brake lines, front & rear drivelines, fuel lines, & wiring harnesses for proper operation, tightness, & adequate clearance.
- Have the headlights readjusted to the proper settings.
- Have a qualified alignment center realign the vehicle to the OEM specifications.
- After the first 100 miles, check all hardware for the proper torque & periodically thereafter.

<u>TORQUE SPECIFICATIONS</u>					
<u>INCH SYSTEM</u>			<u>METRIC SYSTEM</u>		
Bolt Size	Grade 5	Grade 8	Bolt Size	Class 8.8	Class 10.9
5/16	15 FT LB	20 FT LB	6MM	5 FT LB	9 FT LB
3/8	30 FT LB	35 FT LB	8MM	18 FT LB	23 FT LB
7/16	45 FT LB	60 FT LB	10MM	32 FT LB	45 FT LB
1/2	65 FT LB	90 FT LB	12MM	55 FT LB	75 FT LB
9/16	95 FT LB	130 FT LB	14MM	85 FT LB	120 FT LB
5/8	135 FT LB	175 FT LB	16MM	130 FT LB	165 FT LB
3/4	185 FT LB	280 FT LB	18MM	170 FT LB	240 FT LB

- The above specifications are not to be used when the bolt is being installed with a bushing.

Seat Belts Save Lives, Please Wear Your Seat Belt.