



2007 - 2016 Toyota Tundra Front Differential Skid Plate Installation Instructions

www.skyjacker.com

REQUIRED TOOL LIST:

- * Safety Glasses
- * 9/16" Socket / Wrench
- * Drill / 3/8" Drill Bit
- * Floor Jack
- * Jack Stands
- * Torque Wrench



Before beginning the installation, thoroughly & completely read these instructions. Refer to the Parts List to insure that all parts & hardware are received prior to the disassembly of the vehicle. If any parts are found to be missing, contact SKYJACKER® Customer Service at 318-388-0816 to obtain the needed items. If you have any questions or reservations about installing this product, contact SKYJACKER® Technical Assistance at 318-388-0816.

Important Notes:

- This front differential skid plate is designed to only be used with Skyjacker Suspensions 4.5" & 6" lift kits.

Component Box Breakdown:

Part #: TU76SKD

Item #	Description	Qty
TU76SKD-S	TUNDRA FRT DIFF SKID PLATE	1
HB-TU76SKD	HDWR BAG: TU76SKD	1

Item #	Description	Qty
I-TU76SKD	INST SHEET: TU76SKD	1

Hardware Bag Breakdown:

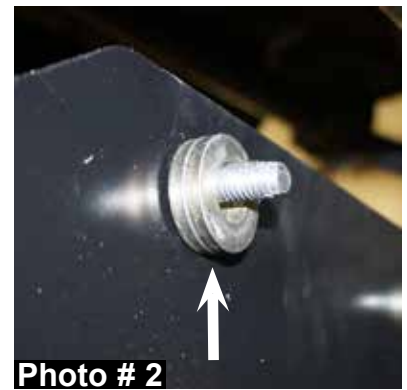
Part # HB-TU76SKD

Item #	Description	Qty
38X114TCFB	3/8 X 1 1/4 THREAD-CUT BOLT	4
38SAEW	3/8 SAE WASHER	4

Item #	Description	Qty
916XTFW	9/16 EXTRA THICK WASHER	4

Installation:

1. With the vehicle on flat level ground, set the emergency brake & block the rear tires / wheels.
2. Raise the front of the vehicle using a floor jack.
3. Place jack stands under the frame rails, behind the front wheel wells & lower the frame onto the jack stands.
4. Hold the new Skyjacker front differential skid plate in place on the Skyjacker front cross member. Mark, center punch, & drill the two front mounting holes of the new Skyjacker front differential skid plate using a 3/8" drill bit. (See Photo # 1)
5. Install the new Skyjacker front differential skid plate to the Skyjacker front cross member using the supplied 3/8" x 1 1/4" thread cutter bolts, washers, & a 9/16" socket / wrench. **Note:** Install two of the supplied 9/16" extra thick washers to each thread cutter bolt between the new front differential skid plate & Skyjacker front cross member. (See Photo # 2)
6. Hold the new Skyjacker front differential skid plate in place on the Skyjacker rear cross member. Mark, center punch, & drill the two rear mounting holes of the new Skyjacker front differential skid plate using a 3/8" drill bit.
7. Install the new Skyjacker front differential skid plate to the Skyjacker rear cross member using the supplied 3/8" x 1 1/4" thread cutter bolts, washers, & a 9/16" socket / wrench. (See Photo # 3)
8. Lower the front of the vehicle to the ground.



Final Notes:

- After the installation is complete, double check that all nuts & bolts have been tightened
- With the vehicle on the ground, cycle the steering lock to lock & inspect the steering, suspension, brake lines, front & rear drivelines, fuel lines, & wiring harnesses for proper operation, tightness, & adequate clearance.
- After the first 100 miles, check all hardware for the proper torque & periodically thereafter.

Seat Belts Save Lives, Please Wear Your Seat Belt!!!